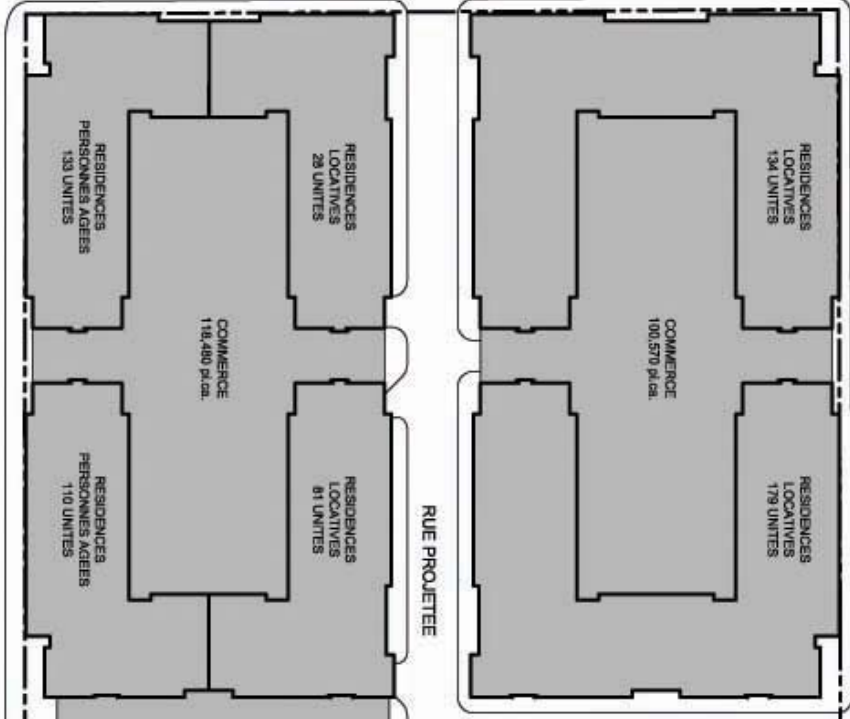


RUE SAINTE-CATHERINE



RESIDENCES
LOCALITIVES
28 UNITES

RESIDENCES
PERSONNES AGEES
130 UNITES

COMMERCE
118,450 p.c.a.

RESIDENCES
LOCALITIVES
81 UNITES

RESIDENCES
PERSONNES AGEES
110 UNITES

RESIDENCES
LOCALITIVES
134 UNITES

COMMERCE
100,570 p.c.a.

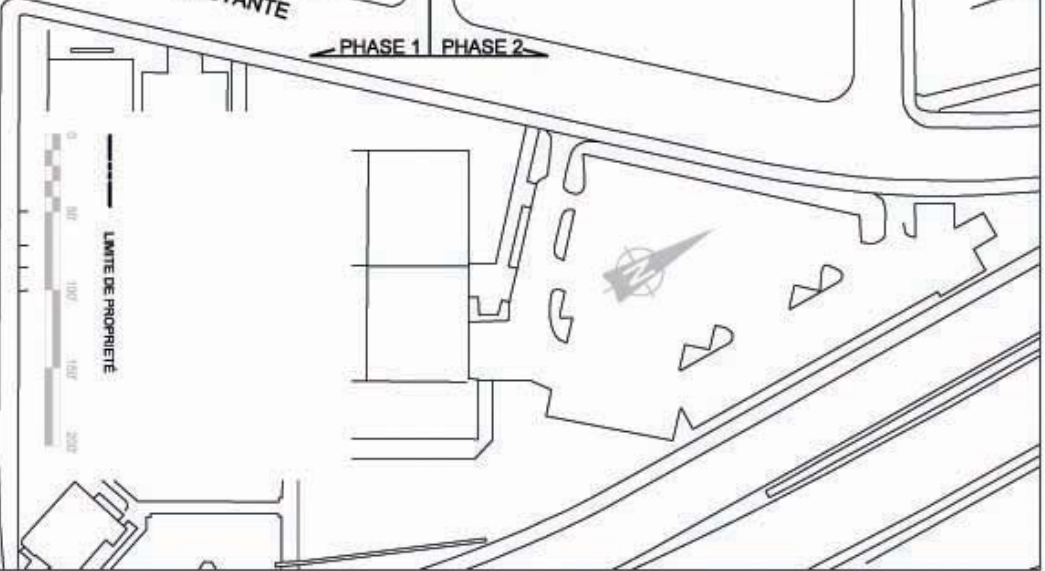
RESIDENCES
LOCALITIVES
179 UNITES

CONDOMINIUMS
336 UNITES

BUREAUX
S.A.D.
94 619 p.c.a.
MAGASIN
S.A.D.
27 999 p.c.a.

RUE EXISTANTE

PHASE 1 PHASE 2



LES NOUVEAUX ENSEMBLES URBAINS L.T.E.E

17 SEPTEMBRE 2003

PORTE SAINTE-MARIE

REPARTITION DES FONCTIONS

MICHELANGE
PANZINI
ARCHITECTES

www.panzini.com