

# A Healthy Neighbourhood

## Information Session PRESENTATION OF THE ACCESS PLAN FOR THE GLEN CAMPUS

April 19, 2007

A joint activity organized by



Centre universitaire de santé McGill  
McGill University Health Centre

Montréal 

 Côte-des-Neiges  
Notre-Dame-de-Grâce  
Montréal 

*Transports*  
Québec 

# The Session's Moderator

- Pierre Tessier  
Optimum Public Relations
- The moderator's role is to keep the meeting moving by designating speaking rights and managing the schedule.
- The meeting will be conducted primarily in French. Participants will receive answers to their questions in the language of their choice (French or English).



# The Session's Objectives

- Inform the population about the changes brought to the Access Plan following public consultation and discussions with the community
- Answer the community's questions
- Keep our commitment to the community



# The Session's Order of Events

- Introductory remarks
- Presentation of the plan  
(35 minutes)
  - Recap of the context
  - Presentation of the changes
- Question period  
(75 minutes)
- Closing remarks



# Introductory Remarks

MARCEL TREMBLAY, MUNICIPAL COUNCILLOR

## A Healthy Neighbourhood

A joint activity organized by



Centre universitaire de santé McGill  
McGill University Health Centre

Montréal 

 Côte-des-Neiges  
Notre-Dame-de-Grâce

Montréal 

*Transports*  
Québec 

# Presentation of Speakers

- Yanai Elbaz, Director, Redevelopment Planning and Real Estate Management  
McGill University Health Centre
- Pierre Major, Associate Director, Infrastructure Planning  
McGill University Health Centre



# Presentation of Speakers

- Alain Trudeau, Project Manager,  
Service de la mise en valeur du  
territoire et du patrimoine  
Ville de Montréal
- Philip Oneson, Engineer,  
Service des infrastructures, transport  
et environnement  
Ville de Montréal



# Presentation of Speakers

- Pierre Jobin, Eng., Associate Director  
Arrondissement de Côte-des-Neiges—Notre-Dame-de-Grâce
- André Marcotte, chef du Service des inventaires et du Plan pour la Direction de l'Île-de-Montréal  
Ministère des Transports du Québec
- Abdelaziz Manar, ingénieur  
Ministère des Transports du Québec





# Presentation of the Access Plan

## A Healthy Neighbourhood

A joint activity organized by



Centre universitaire de santé McGill  
McGill University Health Centre

Montréal 

 Côte-des-Neiges  
Notre-Dame-de-Grâce

Montréal 

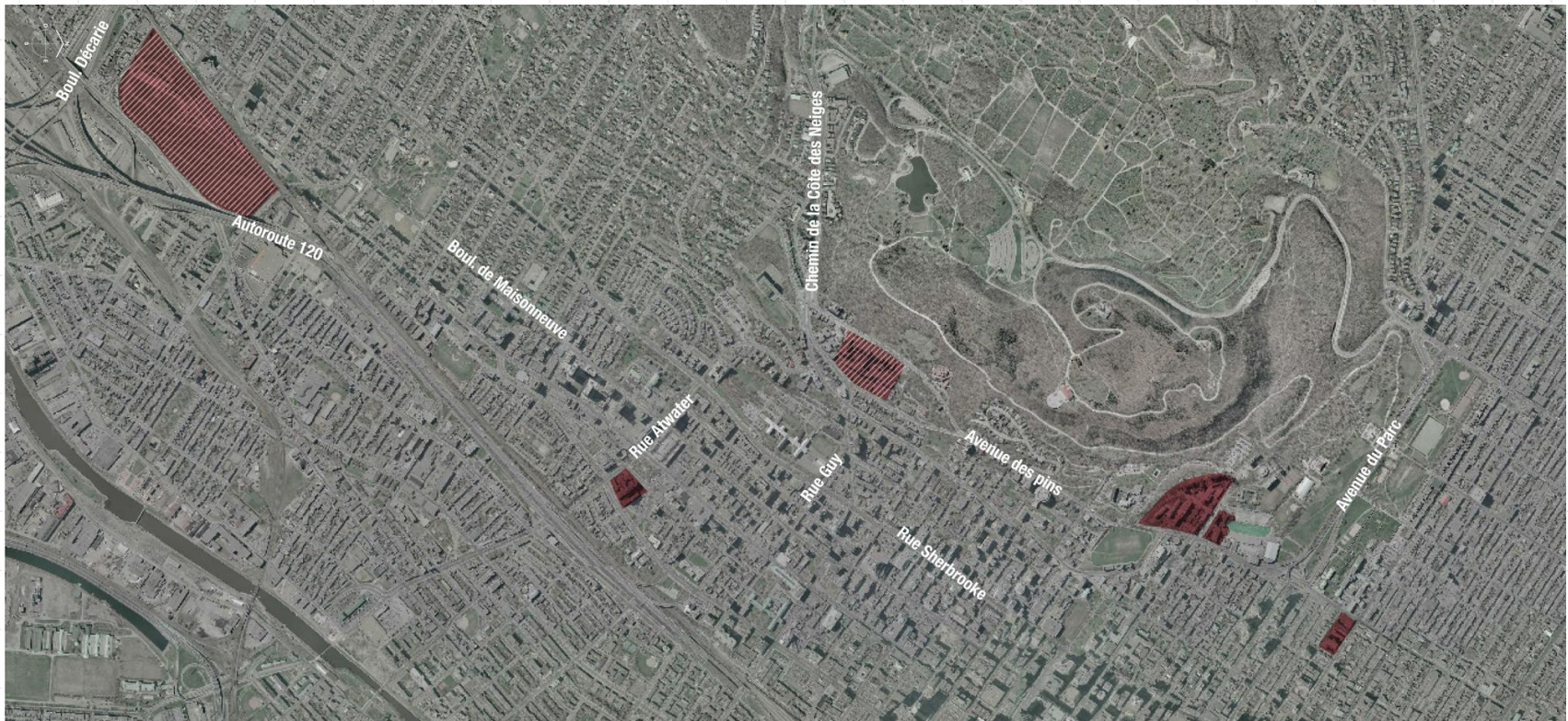
*Transports*  
Québec 

# The MUHC Redevelopment Project

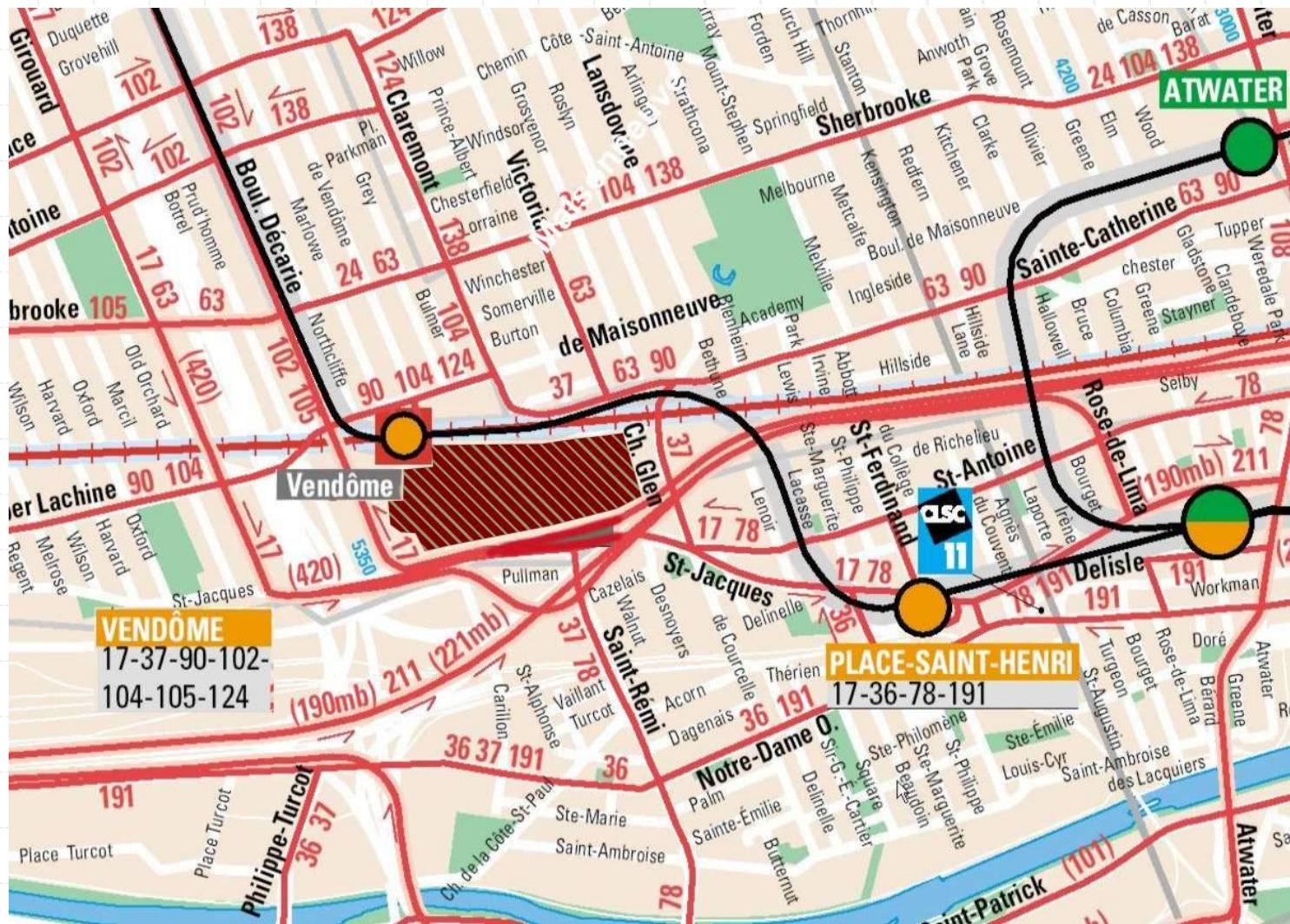
- Pivotal \$1.579B project  
The Best Care for Life
- Distribution of activities on the Glen and Mountain campuses
- Modernization of facilities for patients, research and teaching
- Creation of sustainable, healing environments



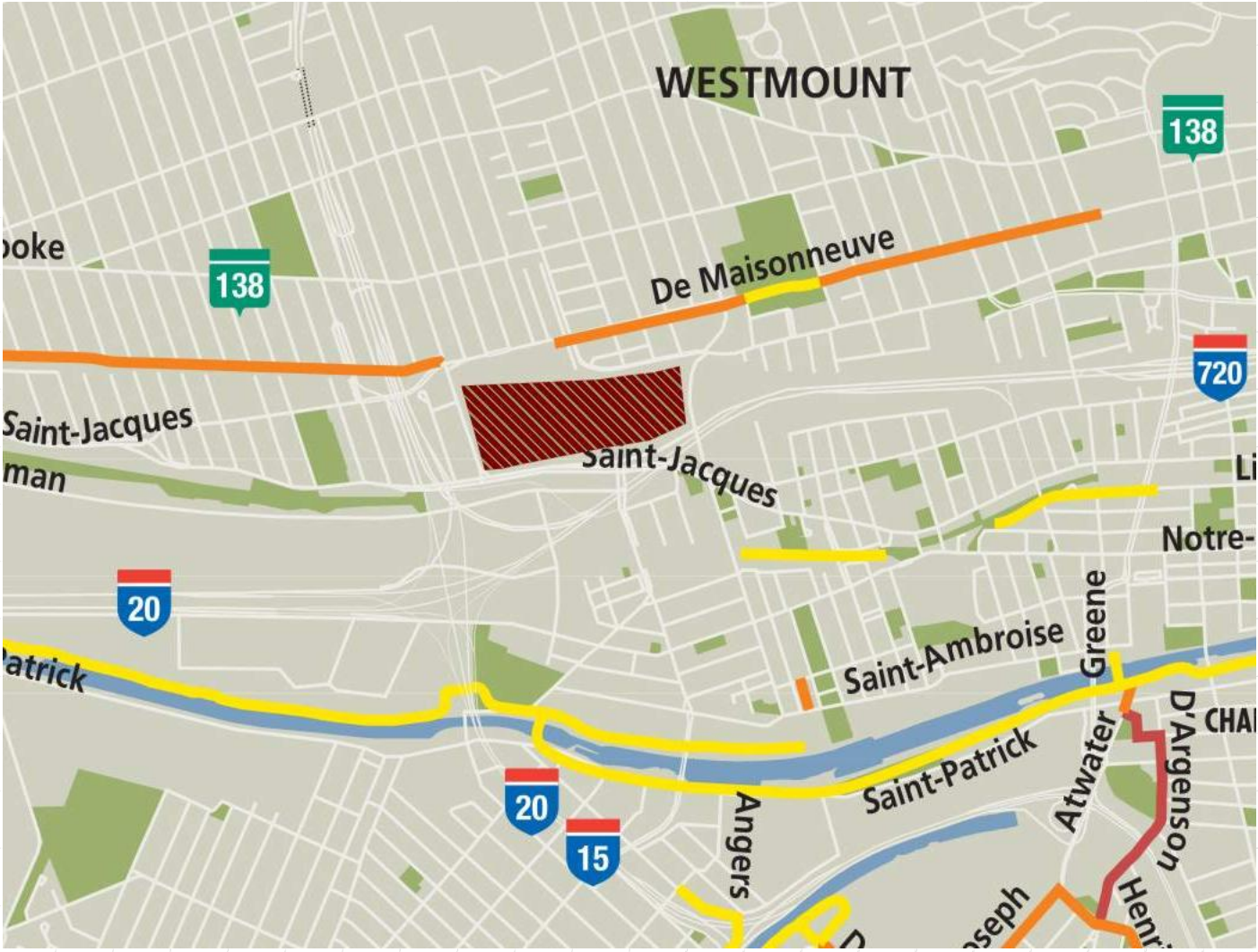
# Redeployment of Activities



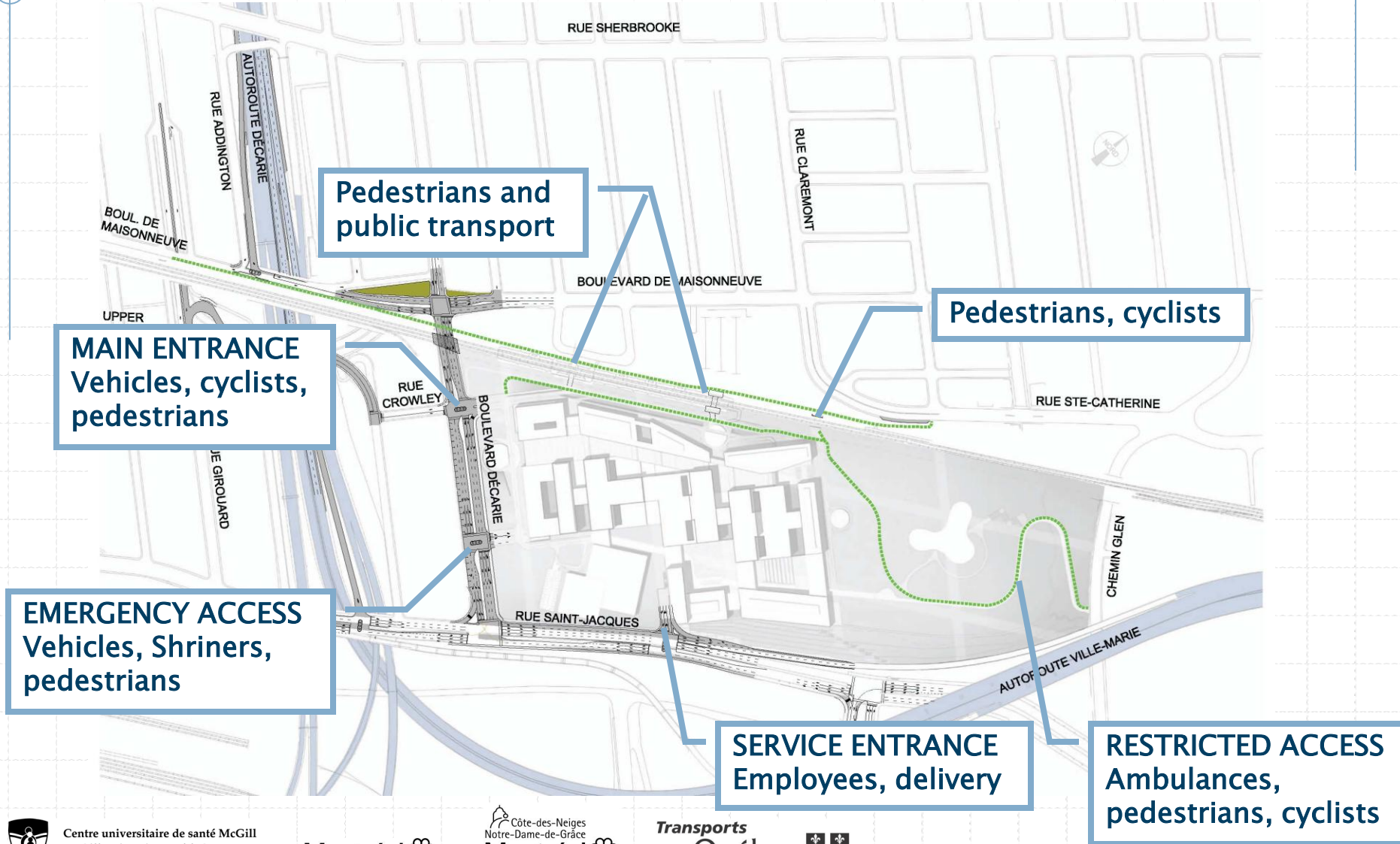
# Public and Active Transportation



# Public and Active Transportation



# Access to the Glen Campus



# Guiding Principles

- ❑ Limit the impacts on the municipal road system
- ❑ Direct vehicles to highways
- ❑ Ensure everyone's safety
- ❑ Favour public and active transportation
- ❑ Offer various rapid routes for users while taking into consideration citizens' needs
- ❑ Ensure an optimal and sustainable use of public funds



# Public Consultation

- Draft by-law for the construction, transformation and occupancy of the Glen Yard by the MUHC and the Shriners Hospital

May 2005

- Challenges related to the Access Plan:
  - 14 briefs presented by citizens
  - 6 recommendations from the OCPM





# Community Efforts

- Timely communication
- Partnership agreement with the Inter-Neighbourhood Coalition
- Numerous meetings and presentations for:
  - Associations
  - Municipal, provincial, federal elected officials
  - Community groups
  - Service sector



# The OCPM's Recommendations

- ❑ Improve pedestrian accesses
- ❑ Defer and stagger the work
- ❑ Make the vehicle exit for the Saint-Jacques access safe
- ❑ Study the possibility of an underground access via Pullman
- ❑ Review the bicycle path's route
- ❑ Study the possibility of a public access at Claremont



# Community Requests

- Preserve the East–West link via Upper Lachine
- Study an alternative to the roundabout
- Align the site's main entrance with Crowley
- Study an alternative plan



# Global View of the Improved Plan



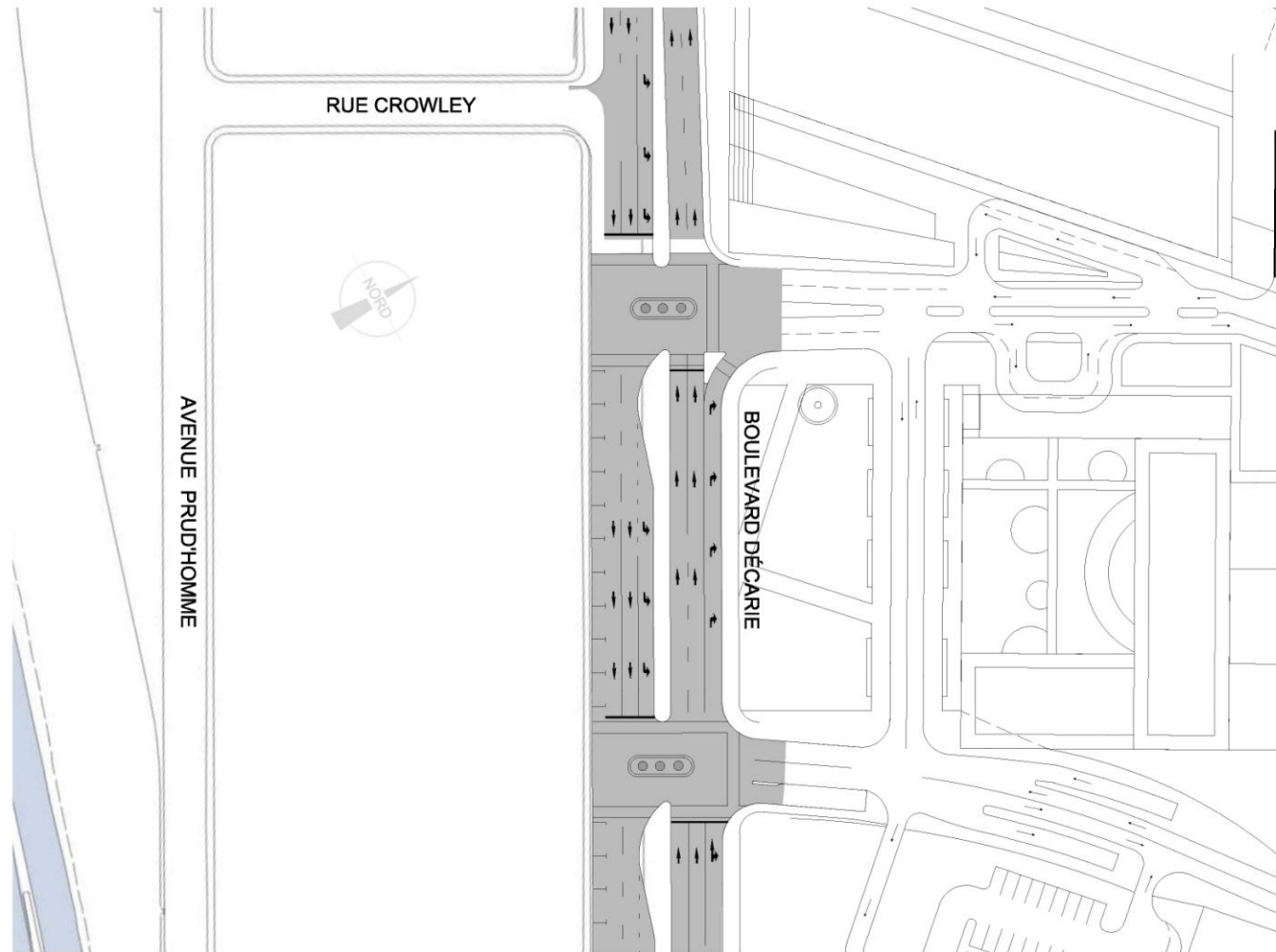
# Precisions on Change #1

## WIDENING OF DÉCARIE WITH TWO SITE ENTRANCES



# Precisions on Change #1

## WIDENING OF DÉCARIE WITH TWO SITE ENTRANCES



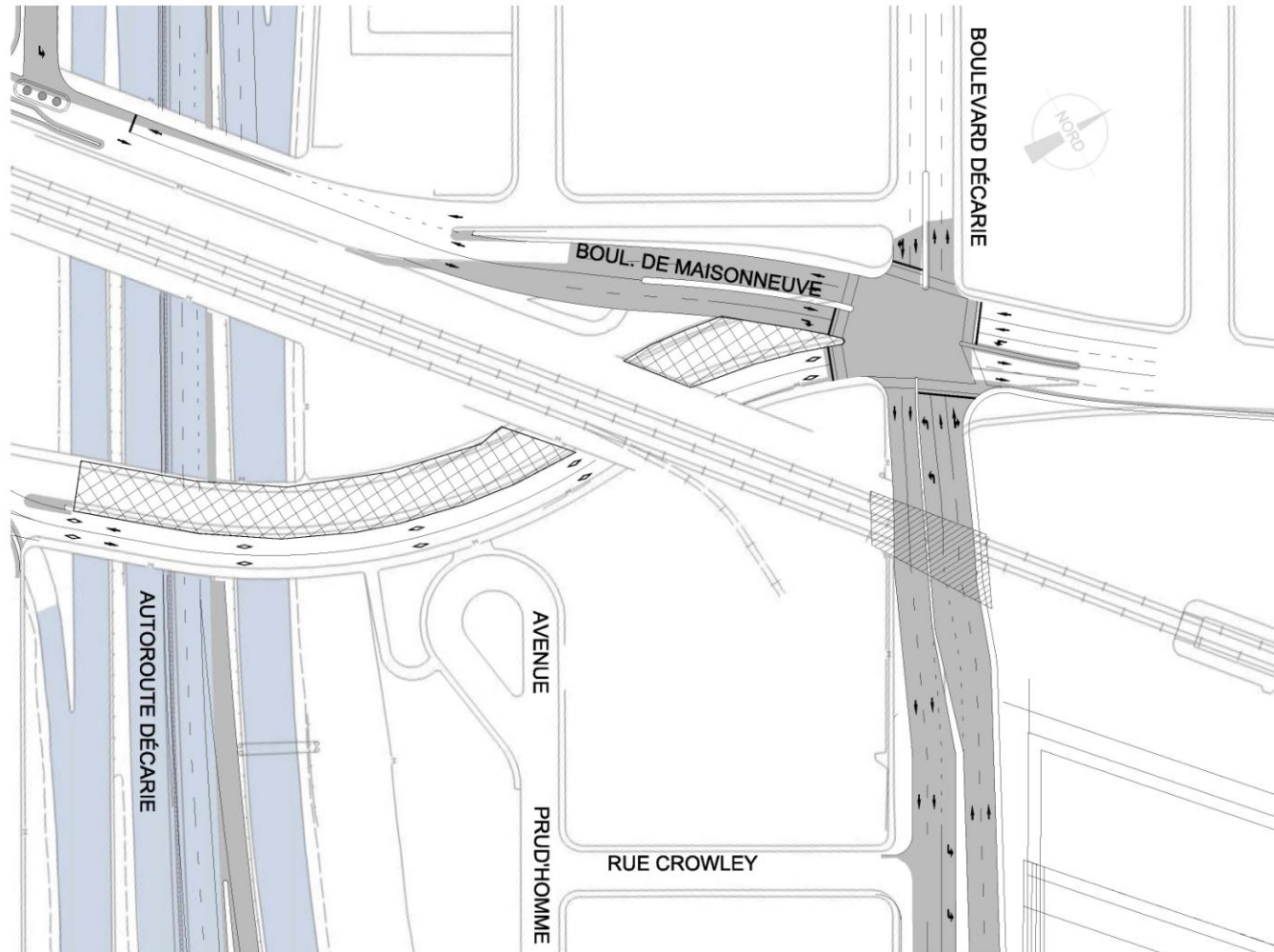
# Precisions on Change #2

## DE MAISONNEUVE / DÉCARIE INTERSECTION



# Precisions on Change #2

## DE MAISONNEUVE / DÉCARIE INTERSECTION





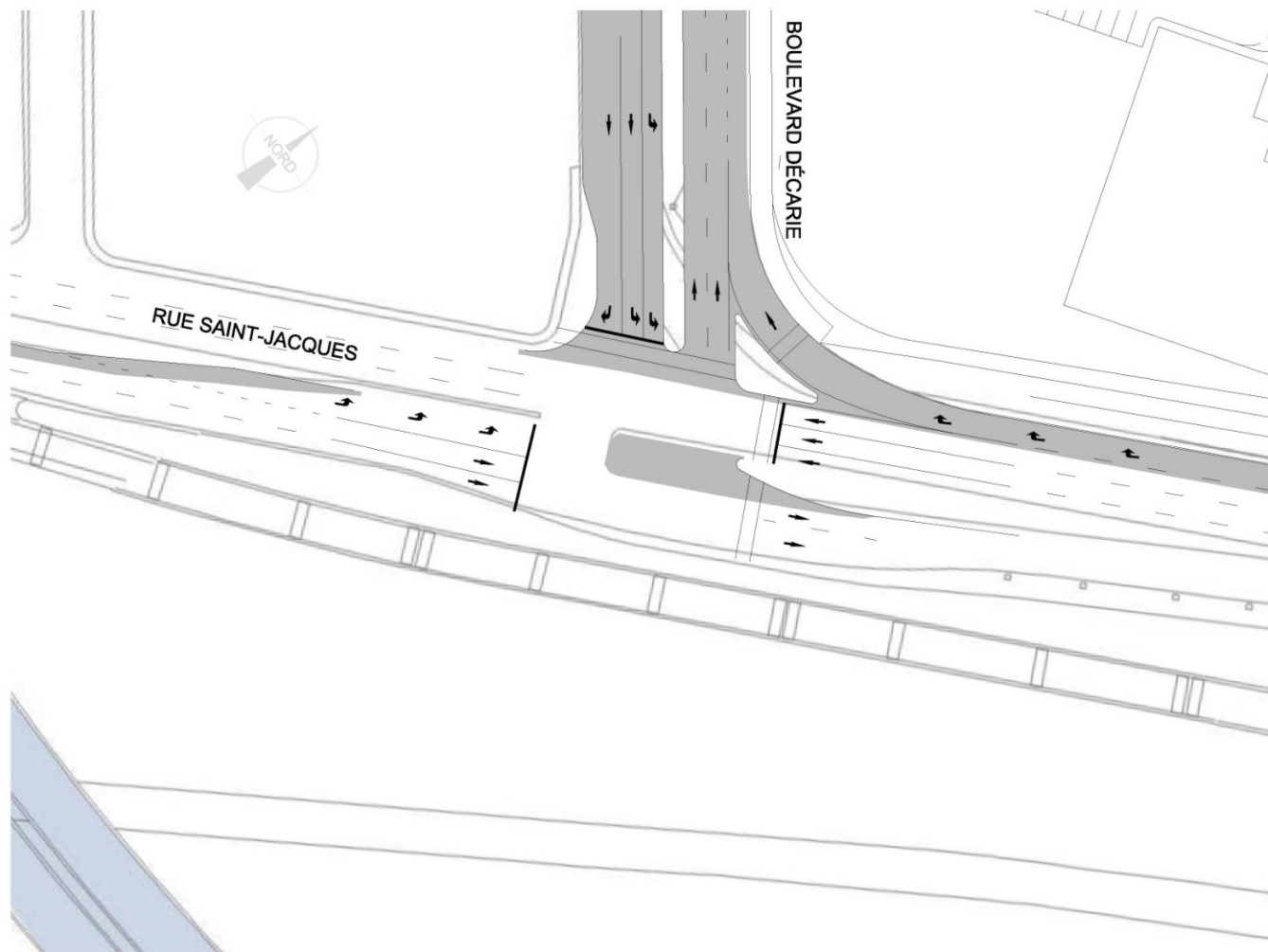
# Precisions on Change #3

## SAINT-JACQUES / DÉCARIE INTERSECTION



# Precisions on Change #3

## SAINT-JACQUES / DÉCARIE INTERSECTION



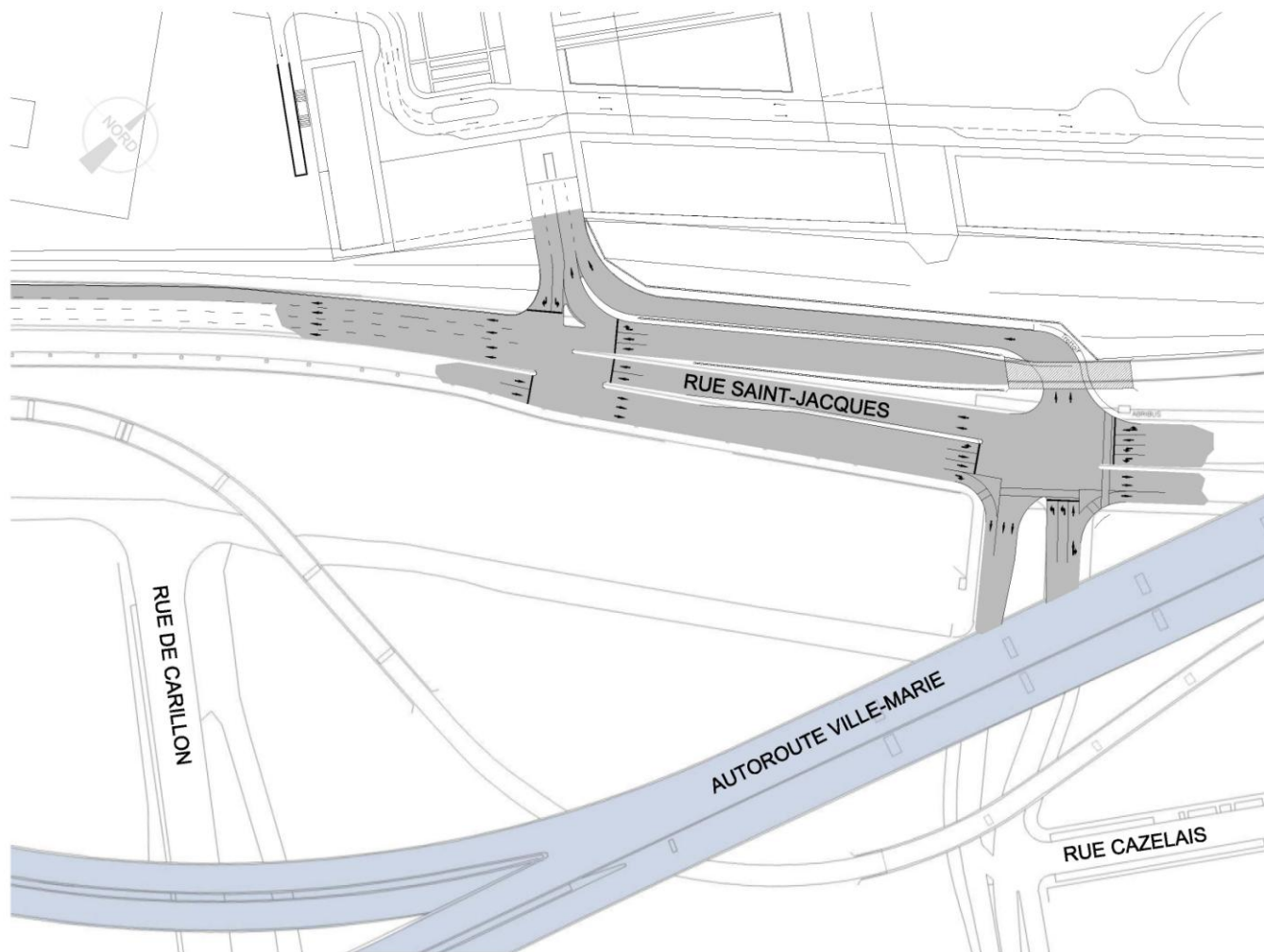
# Precisions on Change #4

## SAINT-JACQUES INTERSECTION & ACCESS TO SITE



# Precisions on Change #4

## SAINT-JACQUES INTERSECTION & ACCESS TO SITE



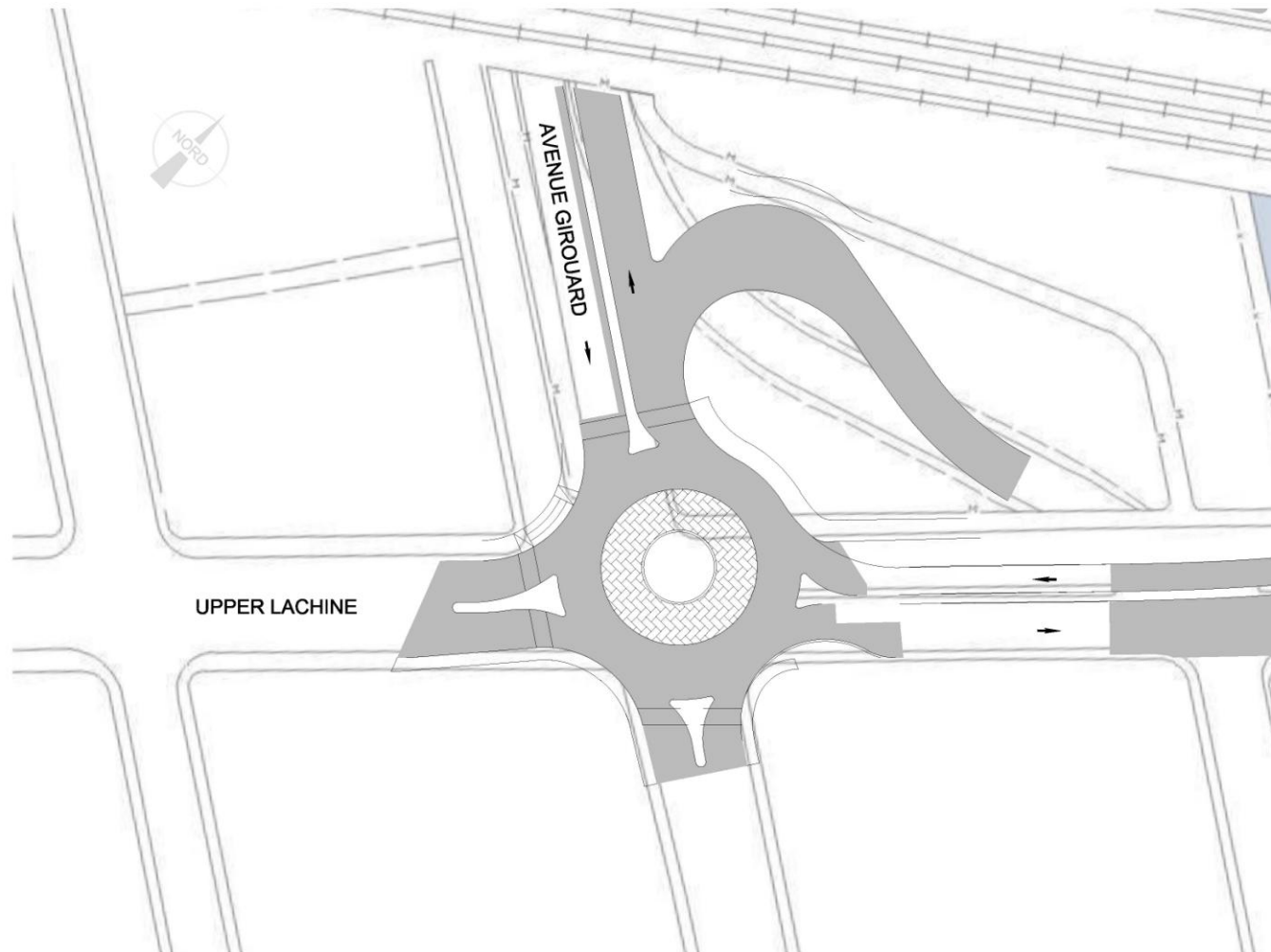
# Precisions on Change #6

## UPPER LACHINE / GIROUARD INTERSECTION



# Precisions on Change #6

## UPPER LACHINE / GIROUARD INTERSECTION



# Precisions on Change #8

## HWY15 SOUTH OFF-RAMP AT DE MAISONNEUVE & BARRIER



# Precisions on Change #8

## HWY15 SOUTH OFF-RAMP AT DE MAISONNEUVE & BARRIER



Centre universitaire de santé McGill  
McGill University Health Centre





# Precisions on Change #8

HWY15 SOUTH OFF-RAMP AT DE MAISONNEUVE & BARRIER



Centre universitaire de santé McGill  
McGill University Health Centre

Montréal 

 Côte-des-Neiges  
Notre-Dame-de-Grâce  
Montréal 

Transports  
Québec 

# Precisions on Change #8

HWY15 SOUTH OFF-RAMP AT DE MAISONNEUVE & BARRIER



Centre universitaire de santé McGill  
McGill University Health Centre

Montréal

Côte-des-Neiges  
Notre-Dame-de-Grâce  
Montréal

Transports  
Québec



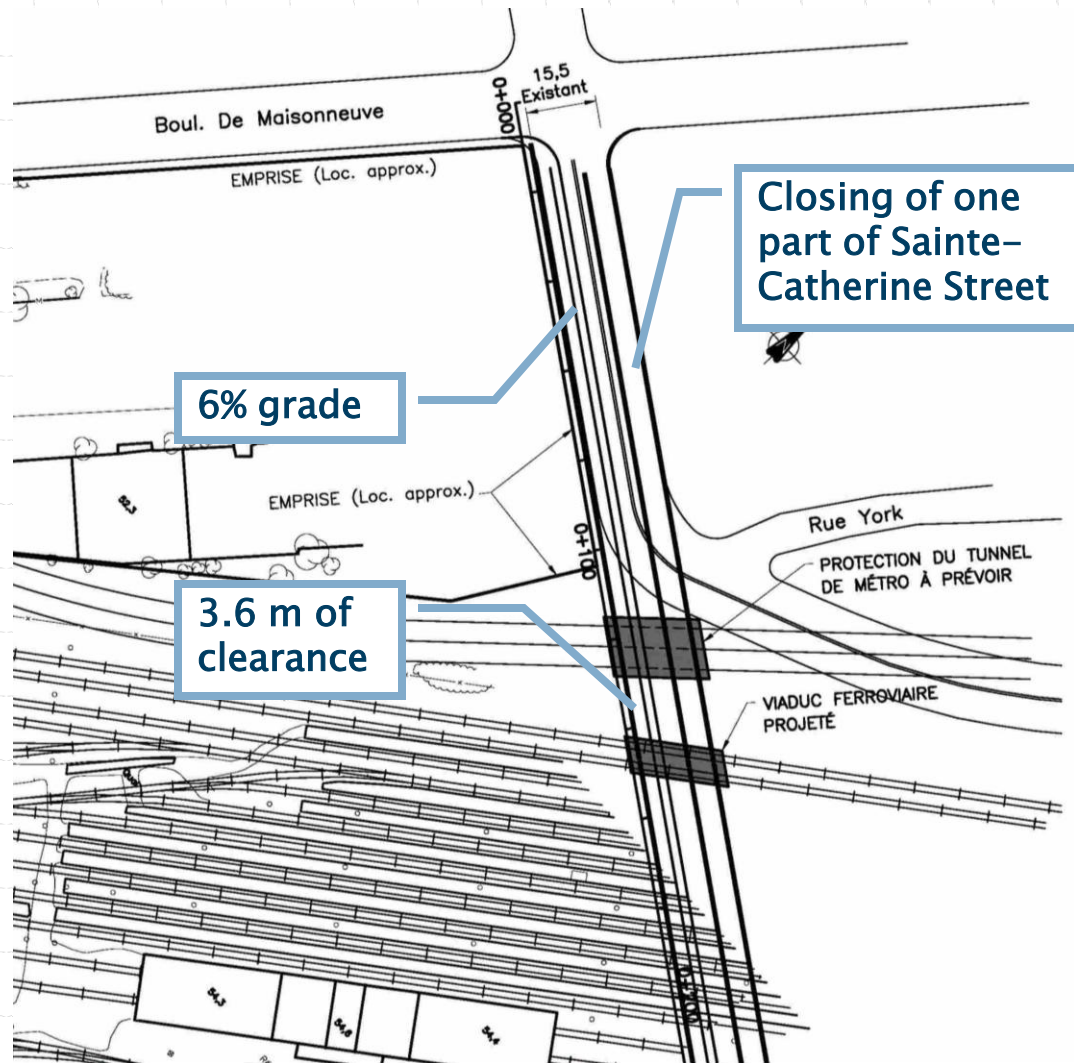
# Precisions on Change #1 1

## UNDERPASS AT CLAREMONT



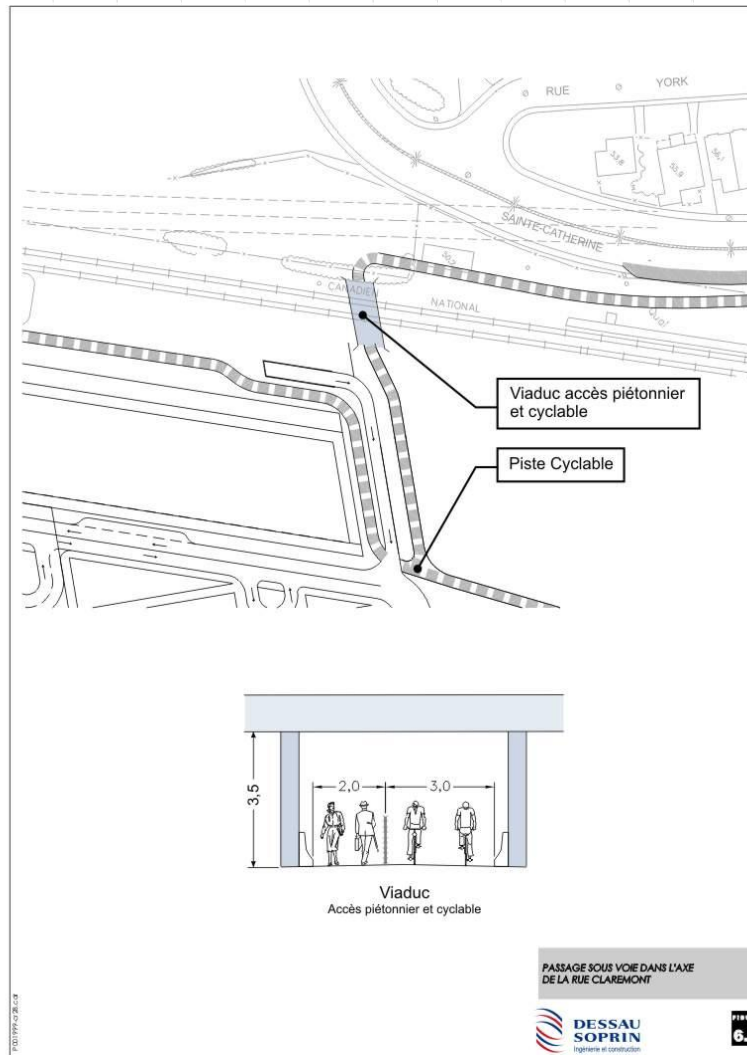
# Precisions on Change #1 1

## UNDERPASS AT CLAREMONT



# Precisions on Change #1 1

## UNDERPASS AT CLAREMONT



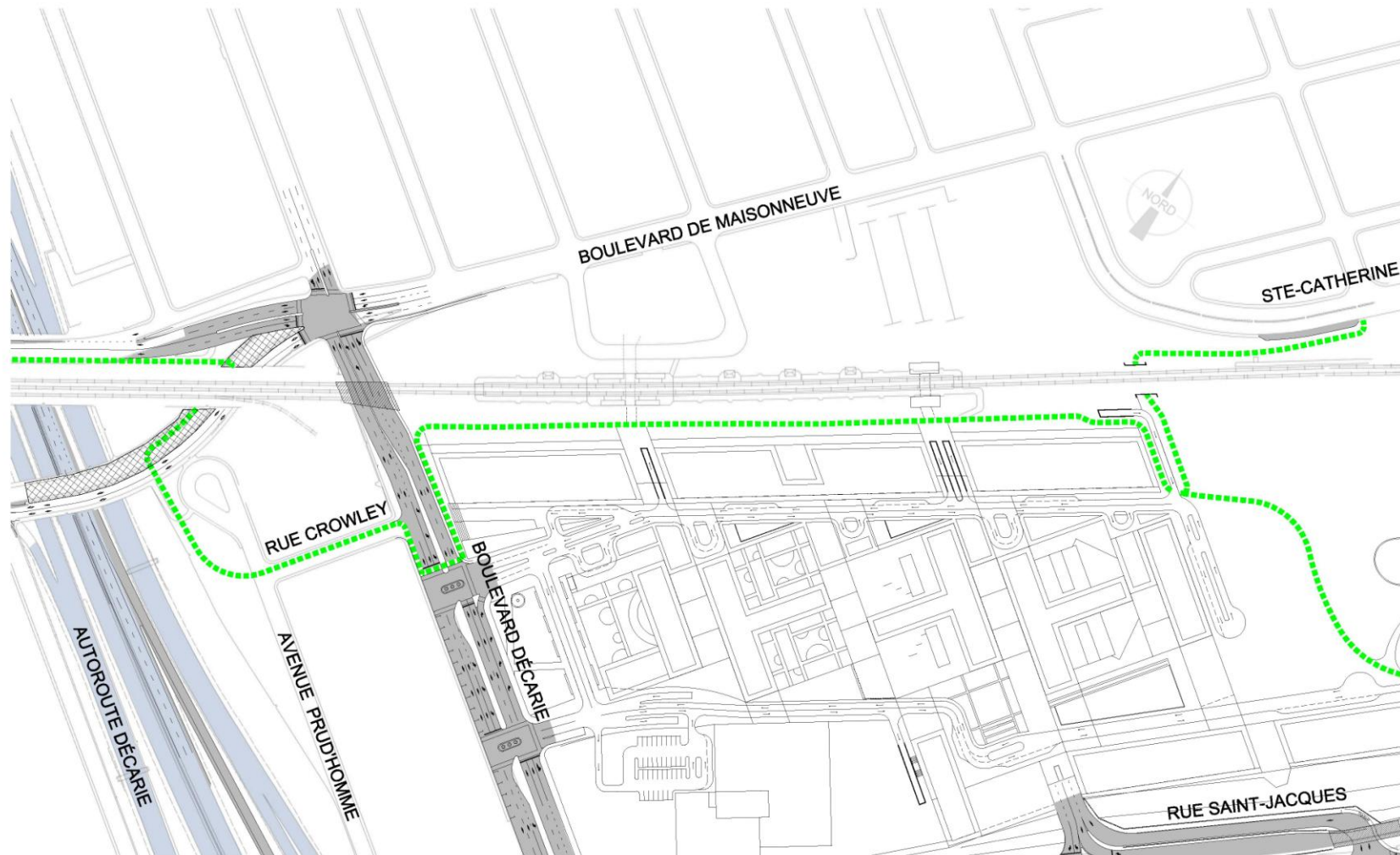
# Precisions on Change #12

## EXTENSION OF THE BICYCLE PATH

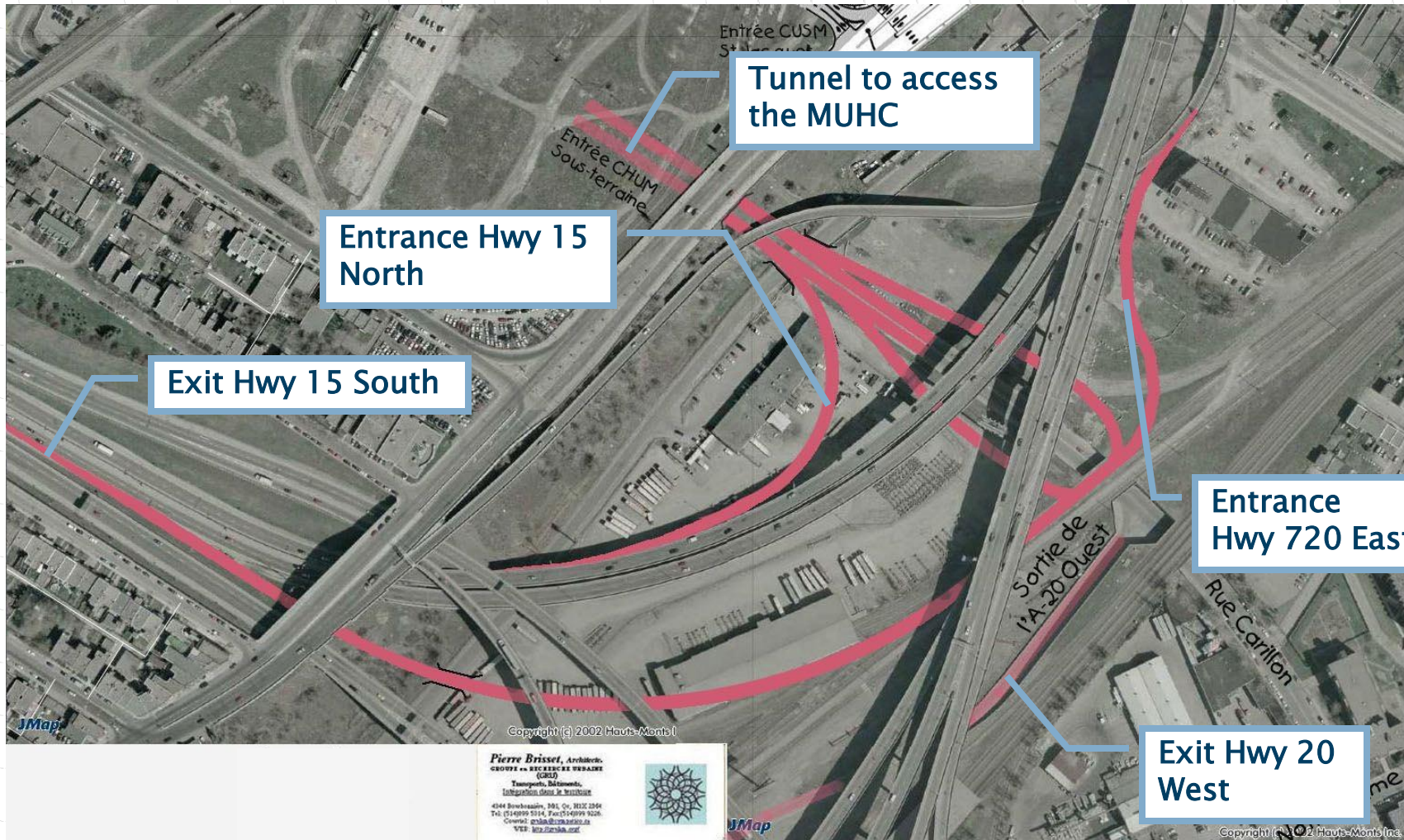


# Precisions on Change #12

## EXTENSION OF THE BICYCLE PATH



# Study of the Alternative Plan





# Study of the Alternative Plan

- ❑ Major problems with road safety
- ❑ Significant pressure on the municipal road system
- ❑ Access to a hospital via a tunnel is neither user-friendly nor safe
- ❑ Incompatibility with the Turcot Interchange's functionality



# Implementation of the Plan

## PHASE 1 (2007–2011)

- Noise barrier and vegetation wall
- Deviation of Upper Lachine
- Reconstruction of the CP overpass
- Widening of Décarie
- Refitting of the De Maisonneuve / Décarie intersection
- Installation of an entrance on Glen



# Implementation of the Plan

## PHASE 2 (2009–2013)

- ❑ Refitting of the Saint–Jacques / Décarie intersection
- ❑ Installation of a roundabout
- ❑ Extension of the bicycle path
- ❑ Installation of the service entrance on Saint–Jacques
- ❑ Prolonging of the pedestrian tunnel at Vendôme



# Implementation of the Plan

PHASE 3 (to be determined)

- Construction of the on-ramp for Highway 15 North at Saint-Jacques
- Installation of an underpass at Claremont



# Positive Impacts on the Neighbourhood

- Opening up of the Saint-Raymond neighbourhood
- Improvement in public and active transportation service
- Adding of bicycle links
- Increased safety
- Improvement of traffic conditions



# Positive Impacts on the Neighbourhood

- New North–South links on Girouard and on Décarie
- Upgrading of the CP overpass to today's standards and revision of the trucking route plan
- Improvement of the De Maisonneuve and Décarie intersection
- Greening of the neighbourhood
- Improvement of the quality of life on Addington



# At a Glance

- All requests have been studied
- Access Plan has been improved in collaboration with citizens
- Increased pressure on municipal road system has been avoided
- Numerous positive impacts for the local community



# Question Period

## A Healthy Neighbourhood

A joint activity organized by



Centre universitaire de santé McGill  
McGill University Health Centre

Montréal 

 Côte-des-Neiges  
Notre-Dame-de-Grâce  
Montréal 

*Transports*  
Québec 



# Closing Remarks

## A Healthy Neighbourhood

A joint activity organized by



Centre universitaire de santé McGill  
McGill University Health Centre

Montréal 

 Côte-des-Neiges  
Notre-Dame-de-Grâce  
Montréal 

*Transports*  
Québec 

# To Reach Us

- MUHC ([www.muhc.ca](http://www.muhc.ca))  
514 934-8317, [po@muhc.mcgill.ca](mailto:po@muhc.mcgill.ca)

