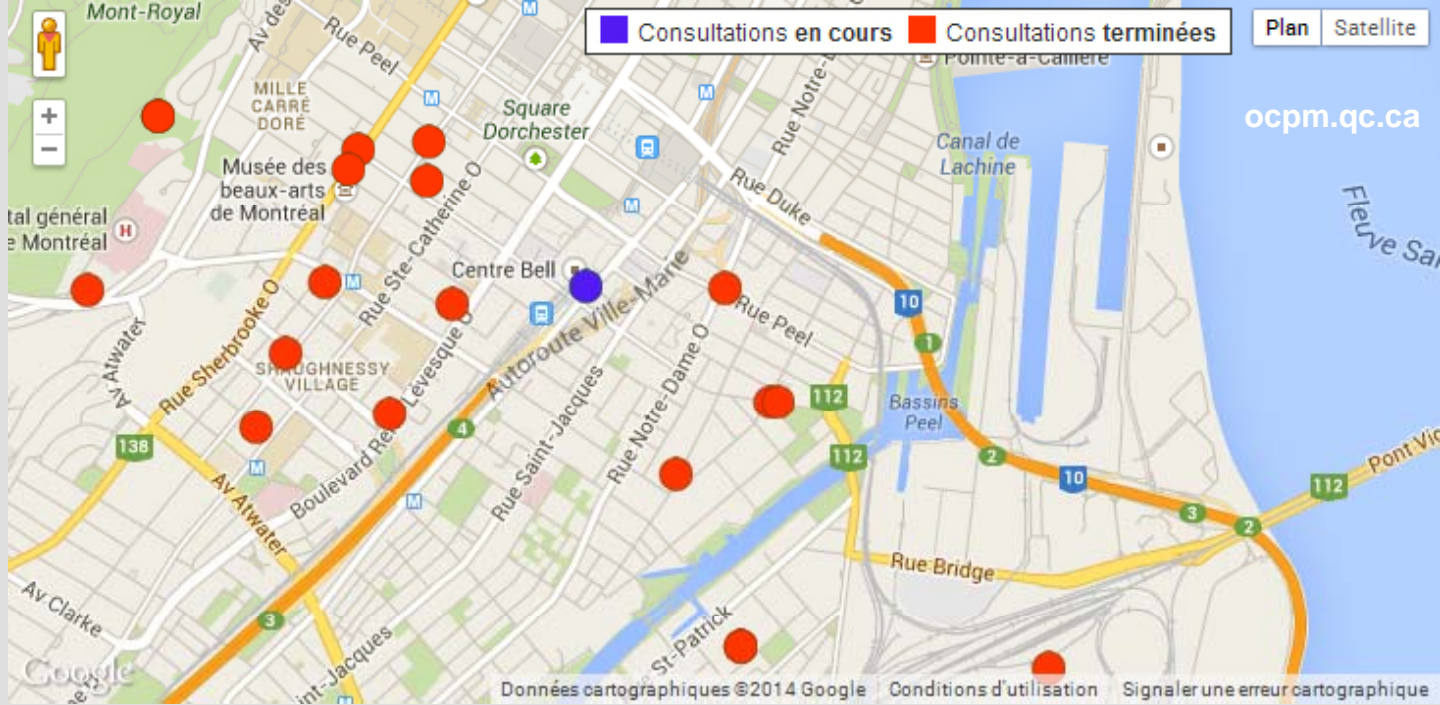




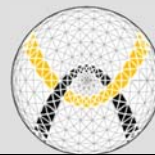
**OFFICE
DE CONSULTATION
PUBLIQUE
DE MONTRÉAL**



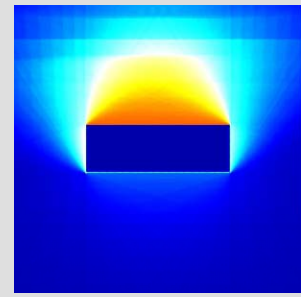
Projet immobilier sur la rue St-Antoine Ouest

**Solar-Climatic and Impacts Analysis of
Proposed Towers Added to Montréal's
Downtown**

February 25, 2014
MOJTABA SAMIMI



www.**SOLARCHVISION**.COM



Introduction

Facts and Factors:

- ▶ Current and future challenges: Energy resources, Energy efficiency, Pollution, Heat island effect, Climate change, Global warming, etc.
- ▶ Montréal's solar-climatic response has a direct effect on **health**, **comfort** and **safety** for people inside and outside buildings.
- ▶ **Bold** effect of the municipality, urban planners, architects and landscape architects in the process of decision making.



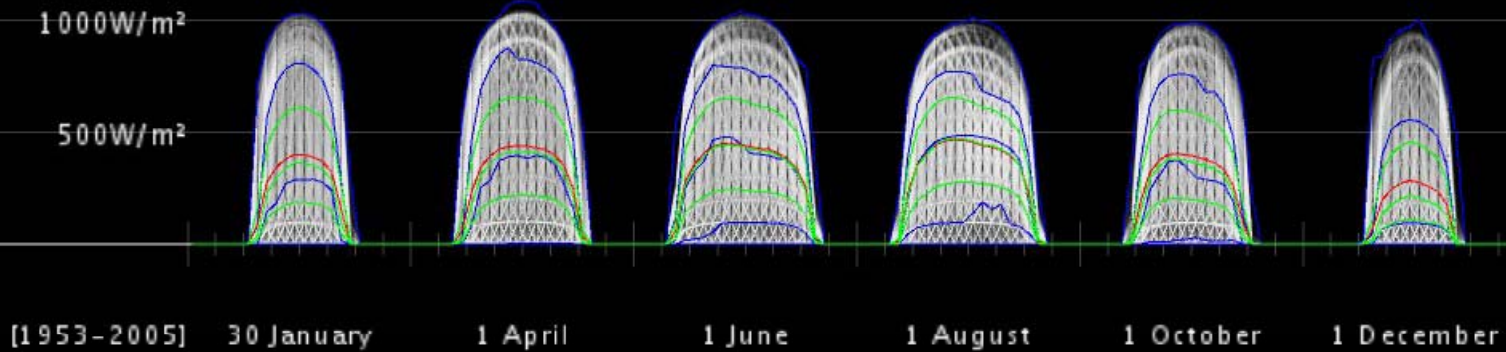
Problem Definition

Passive strategies: to receive more from the Sun in cold times and to be protected in hot times (Health, Comfort and safety measures as well as energy efficiency).

Active strategies: to receive more from the pure and unlimited energy of the Sun (Energy efficiency, energy production).

► SOLARCHVISION studies put the active and the passive strategies into a dialectical relationship to fashion a culture of **Solar-Climatic Vision** in design and planning, which traverses different scales (from a human scale to an urban and territorial as well as global scale) like the sun itself.

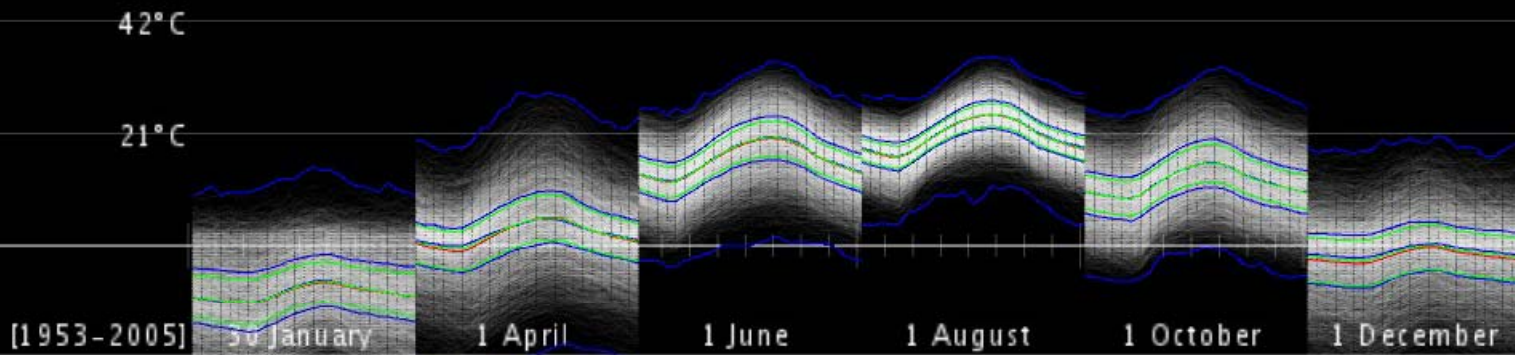




direct normal radiation

plotted by SOLARCHVISION 2014
 data: <http://climate.weather.gc.ca>

file:QC_MONTREAL-INT'L-A

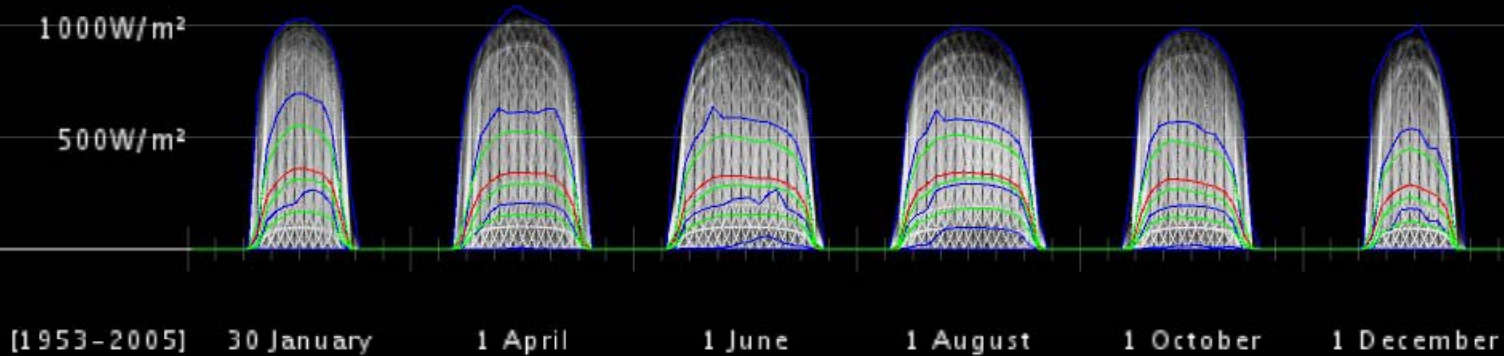


temperature

plotted by SOLARCHVISION 2014
 data: <http://climate.weather.gc.ca>

file:QC_MONTREAL-INT'L-A

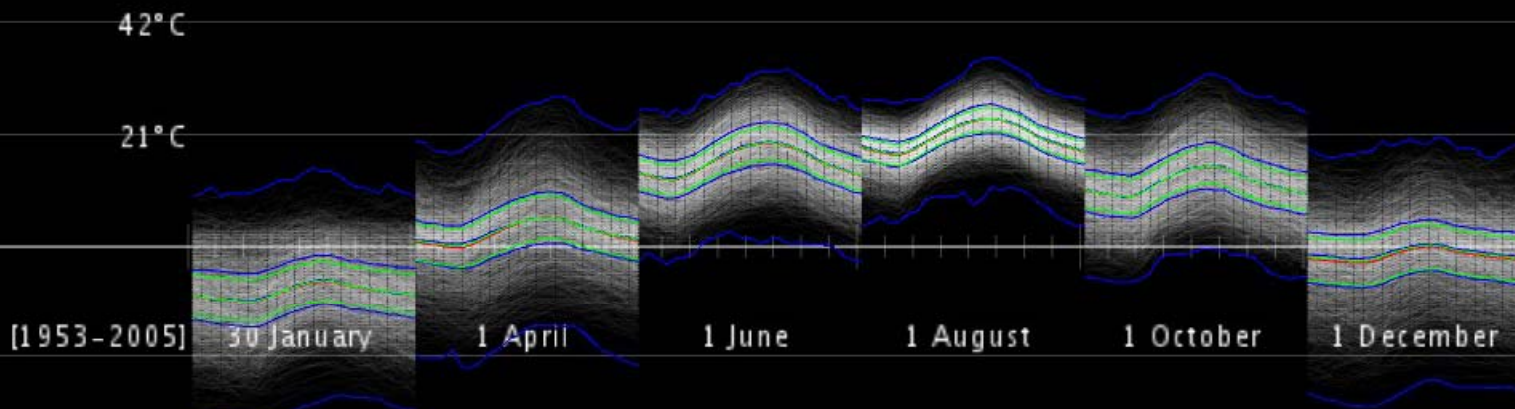




direct normal radiation [scattered sky]

plotted by SOLARCHVISION 2014
 data: <http://climate.weather.gc.ca>

file:QC_MONTREAL-INT'L-A

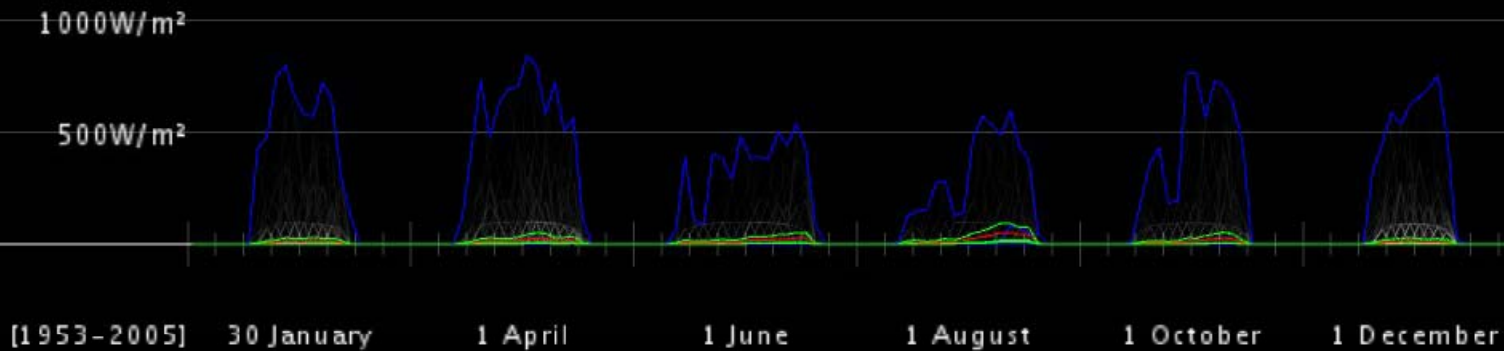


temperature [scattered sky]

plotted by SOLARCHVISION 2014
 data: <http://climate.weather.gc.ca>

file:QC_MONTREAL-INT'L-A

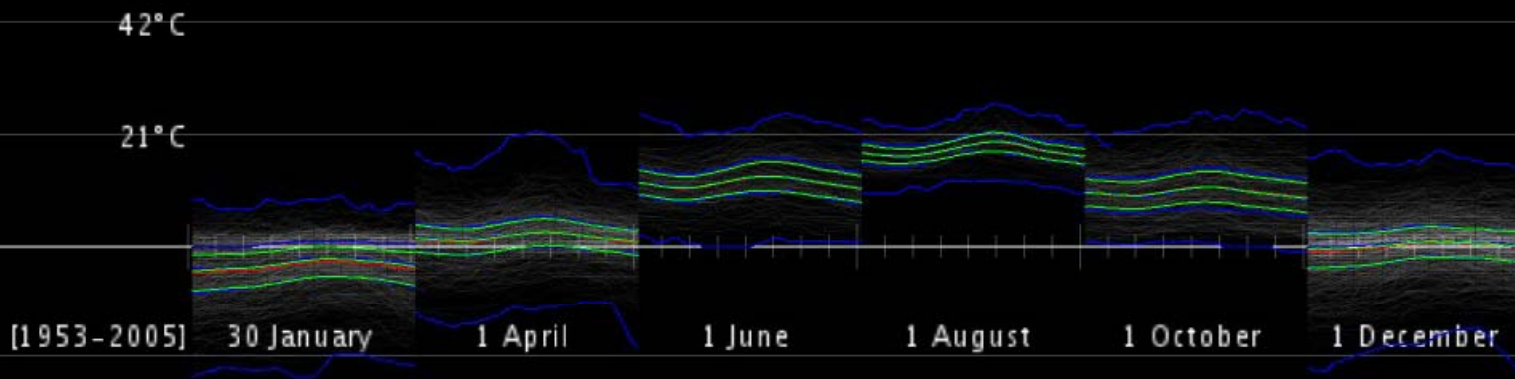




direct normal radiation [overcast sky]

plotted by SOLARCHVISION 2014
 data: <http://climate.weather.gc.ca>

file:QC_MONTREAL-INT'L-A

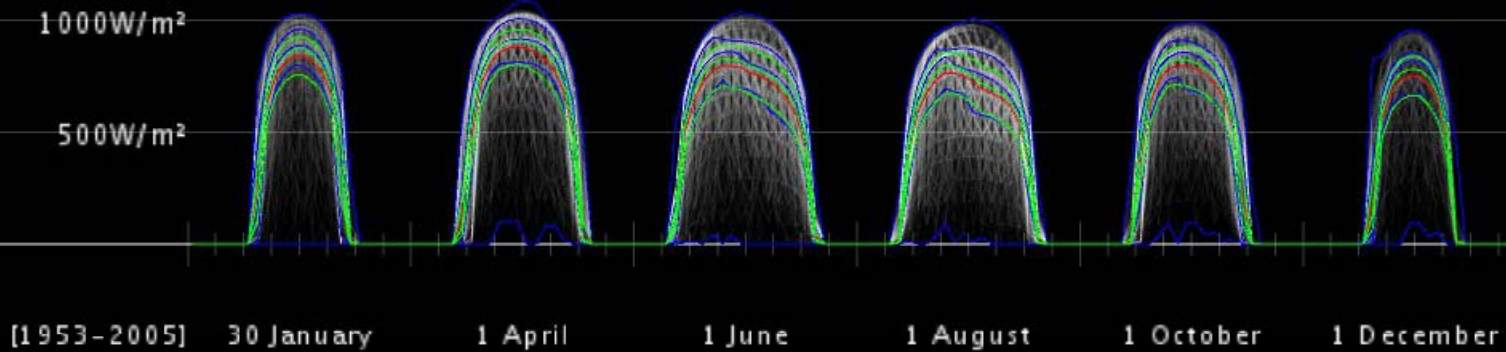


temperature [overcast sky]

plotted by SOLARCHVISION 2014
 data: <http://climate.weather.gc.ca>

file:QC_MONTREAL-INT'L-A

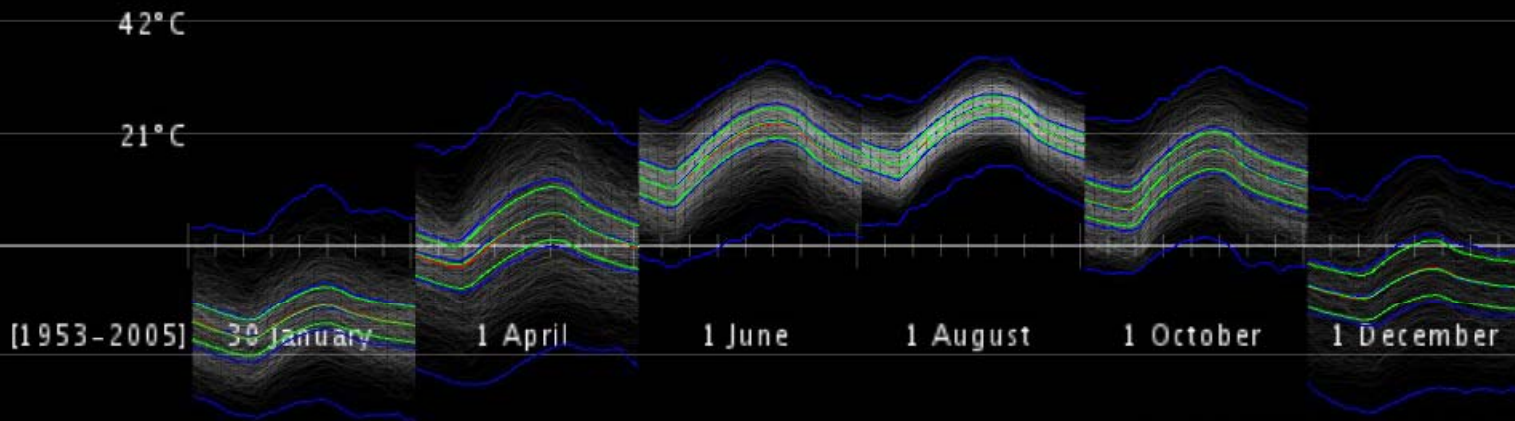




direct normal radiation [clear sky]

plotted by SOLARCHVISION 2014
 data: <http://climate.weather.gc.ca>

file:QC_MONTREAL-INT'L-A

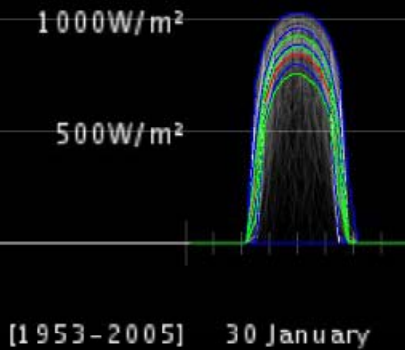


temperature [clear sky]

plotted by SOLARCHVISION 2014
 data: <http://climate.weather.gc.ca>

file:QC_MONTREAL-INT'L-A

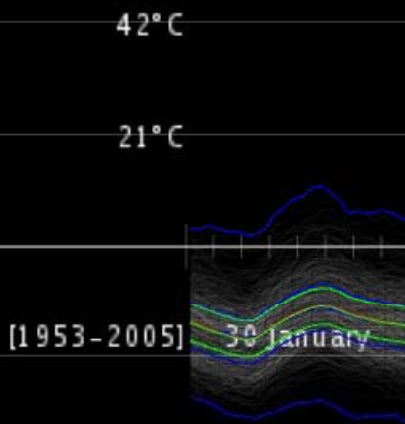




direct normal radiation [clear sky]

file:QC_MONTREAL-INT'L-A

In Montréal with winter temperatures between -10°C and -30°C , the availability of direct normal radiation can exceed $750\text{W}/\text{m}^2$ and sometimes even reach $1000\text{W}/\text{m}^2$. In other words, in such locations the coldest and warmest temperatures most often likely occur on sunny days. This simple fact increases the importance and great benefit of considering the sun, both in planning of buildings as well as the interaction of those buildings with outdoor areas in Montréal.



temperature [clear sky]

file:QC_MONTREAL-INT'L-A

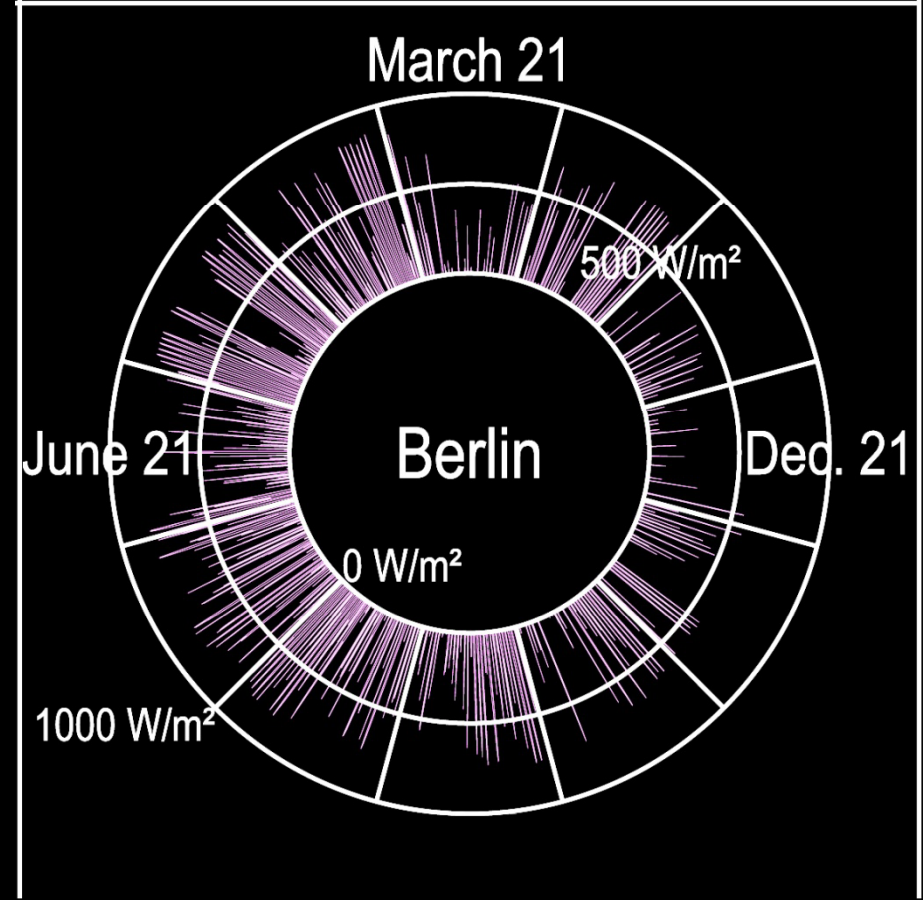
As a result, cold and at times cloudy conditions, like those of a Montréal winter, should not be considered a convincing reason to avoid applying and optimizing solar design in buildings and urban quarters. In contrast, solar studies as well as consideration of the sun in architectural and urban design are essential in cities with extreme temperature conditions simply because in many cases, extreme temperature conditions are also sunny.

“Intelligent design using solar-climatic vision: Energy and comfort improvement in architecture and urban planning using SOLARCHVISION”, Young Cities Research Paper Series, Volume 09, Technische Universität Berlin, 2014





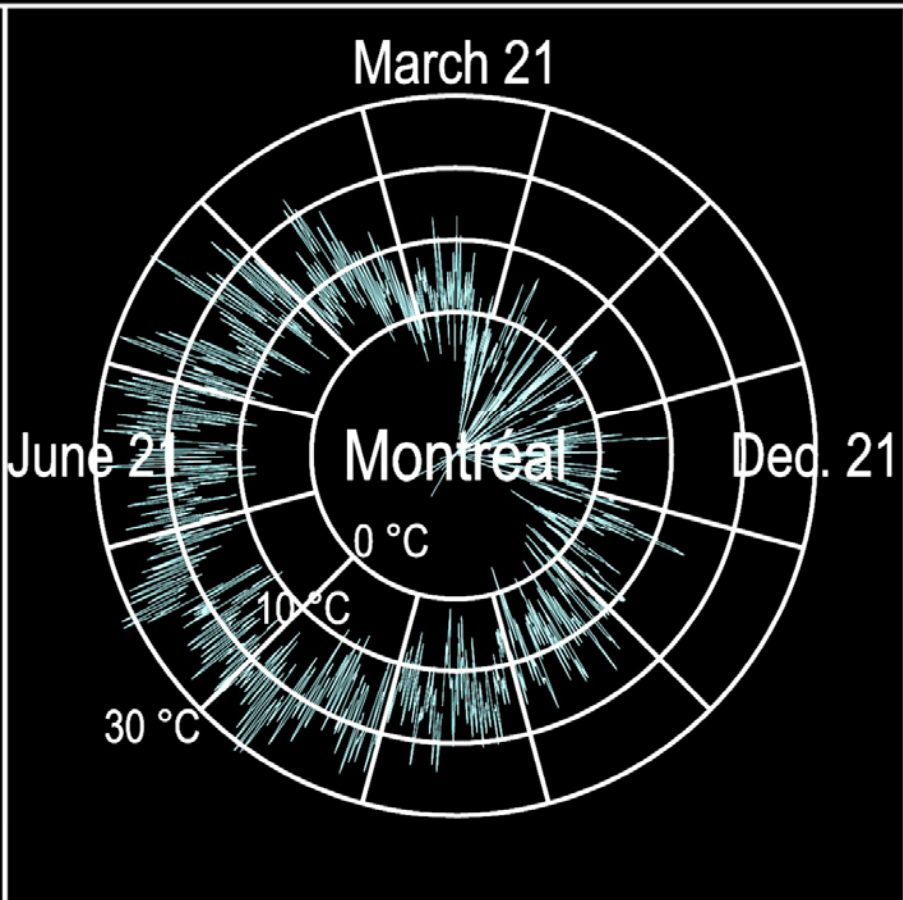
Montréal, Canada



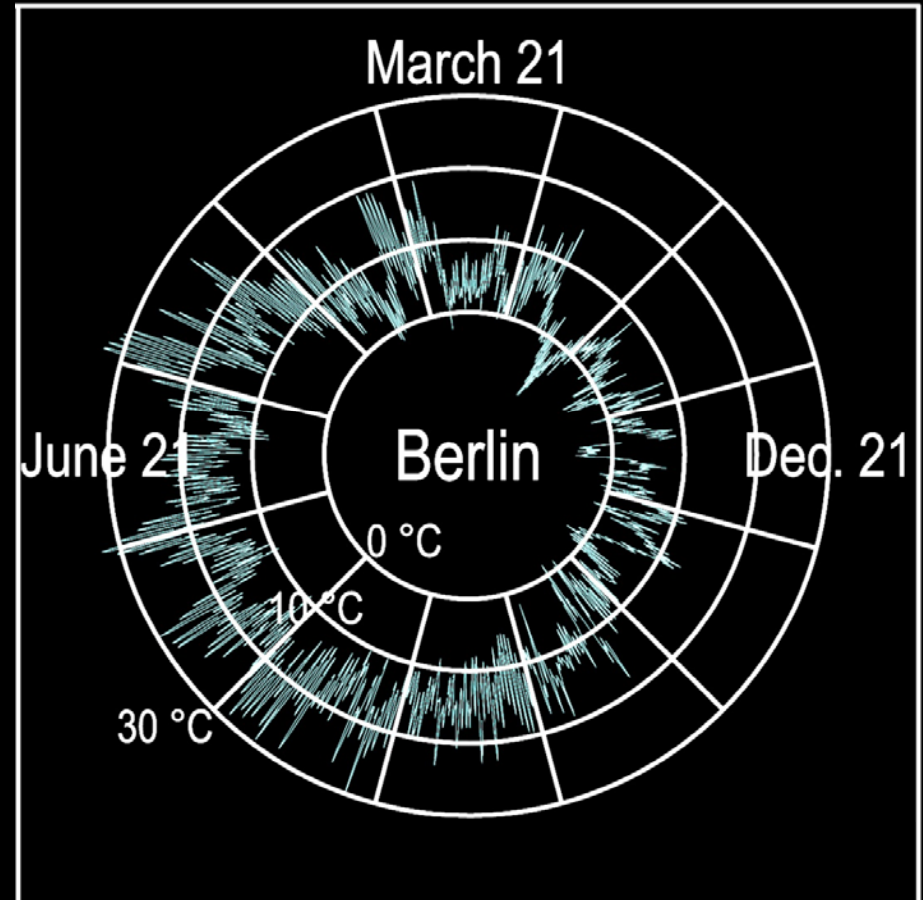
Berlin, Germany

SOLARCHVISION radial annual plot of hourly **direct beam radiation**,
in typical meteorological year (U.S. Department of Energy TMY files)





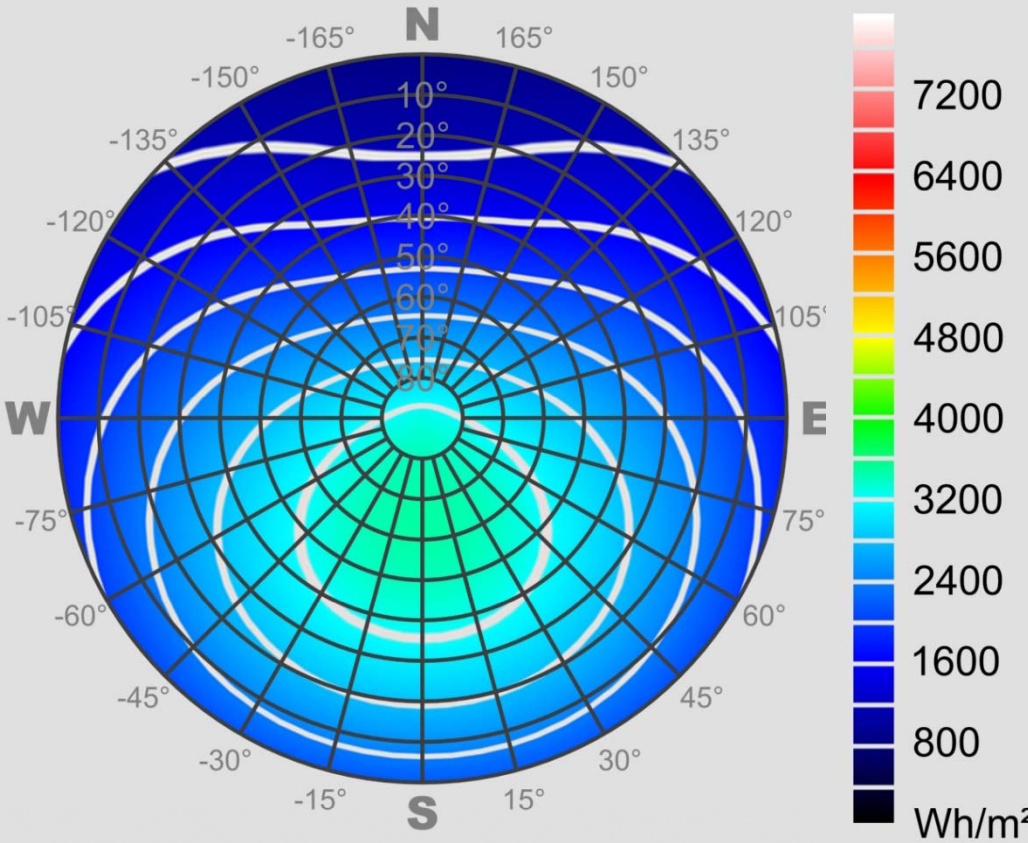
Montréal, Canada



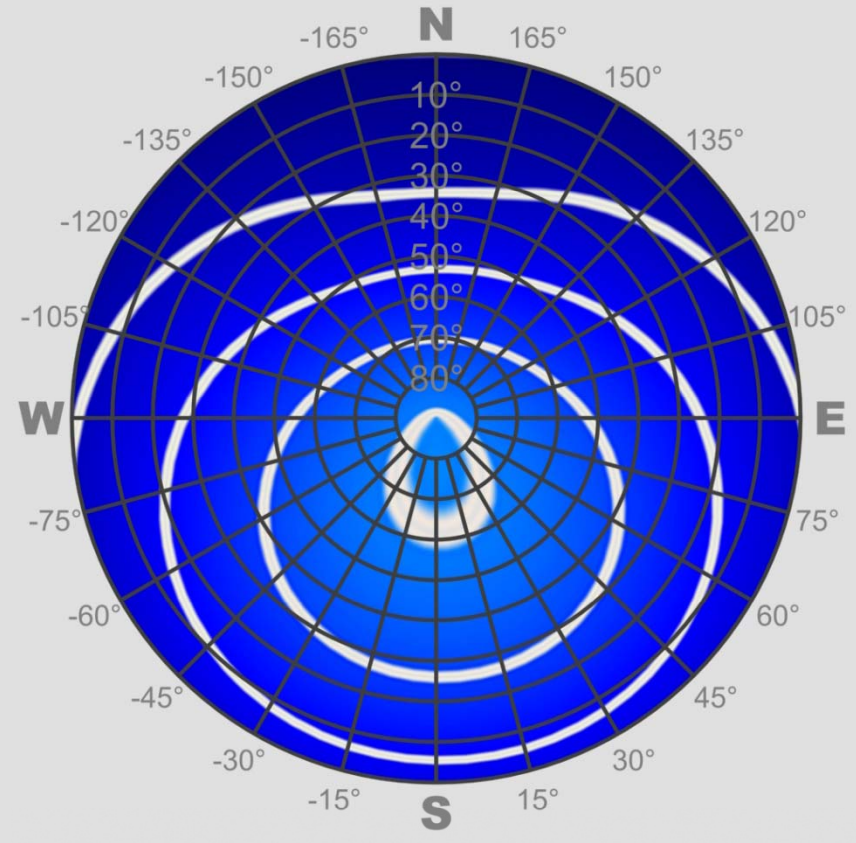
Berlin, Germany

SOLARCHVISION radial annual plot of hourly **temperature**,
in typical meteorological year (U.S. Department of Energy TMY files)





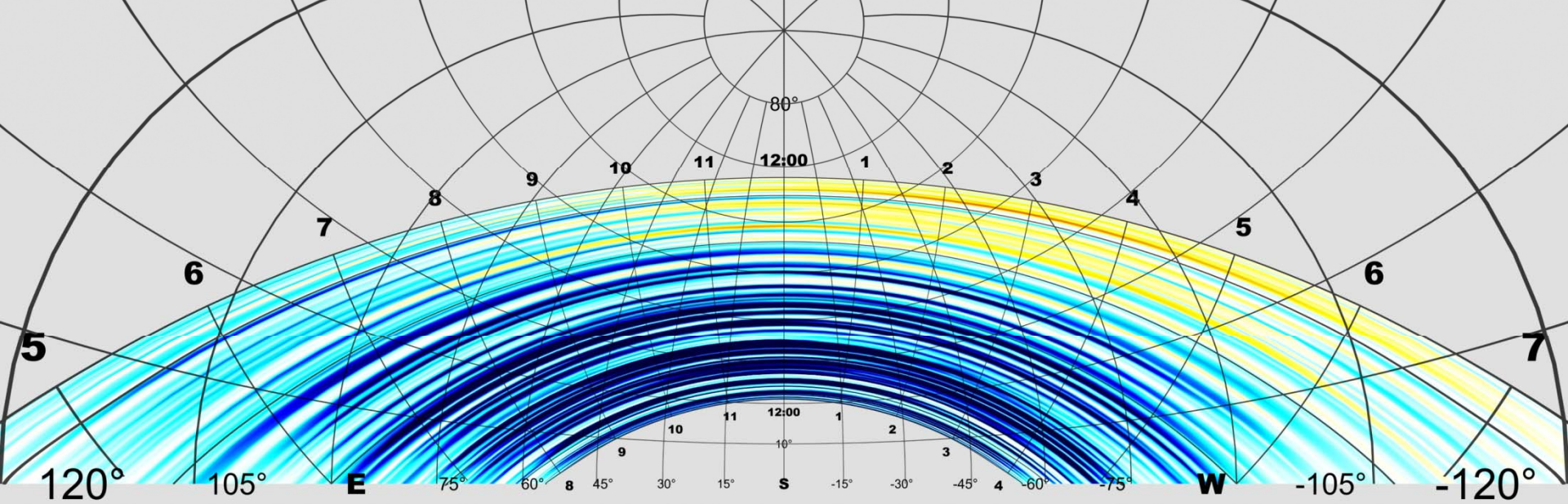
Montréal, Canada



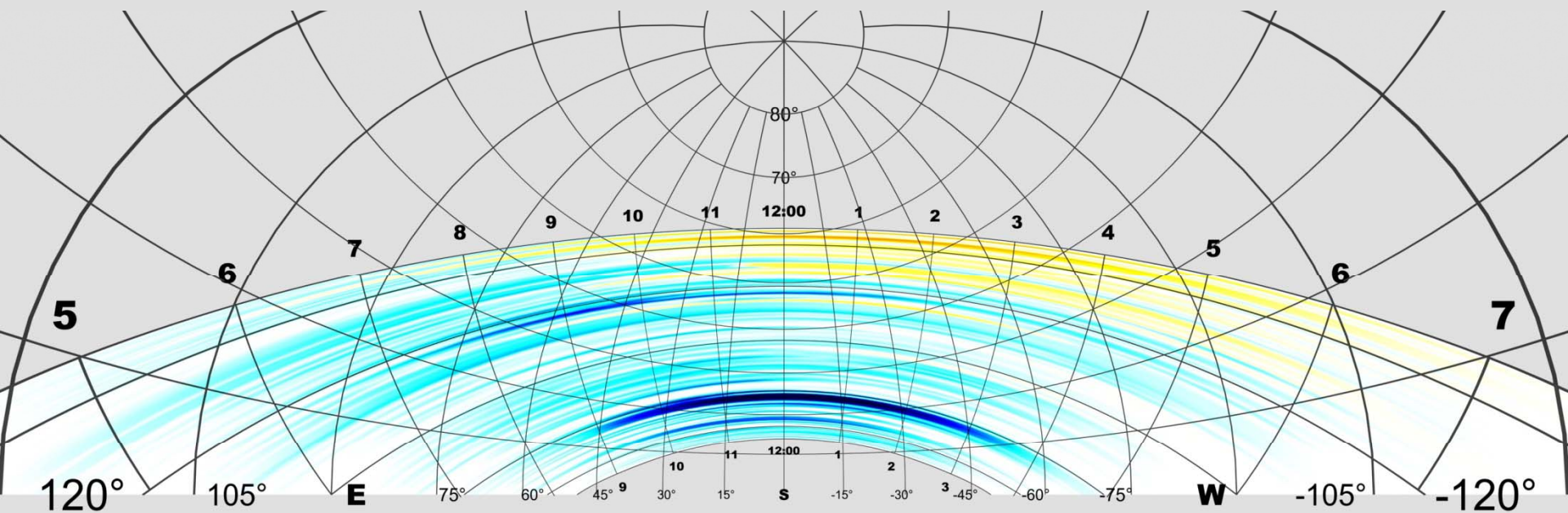
Berlin, Germany

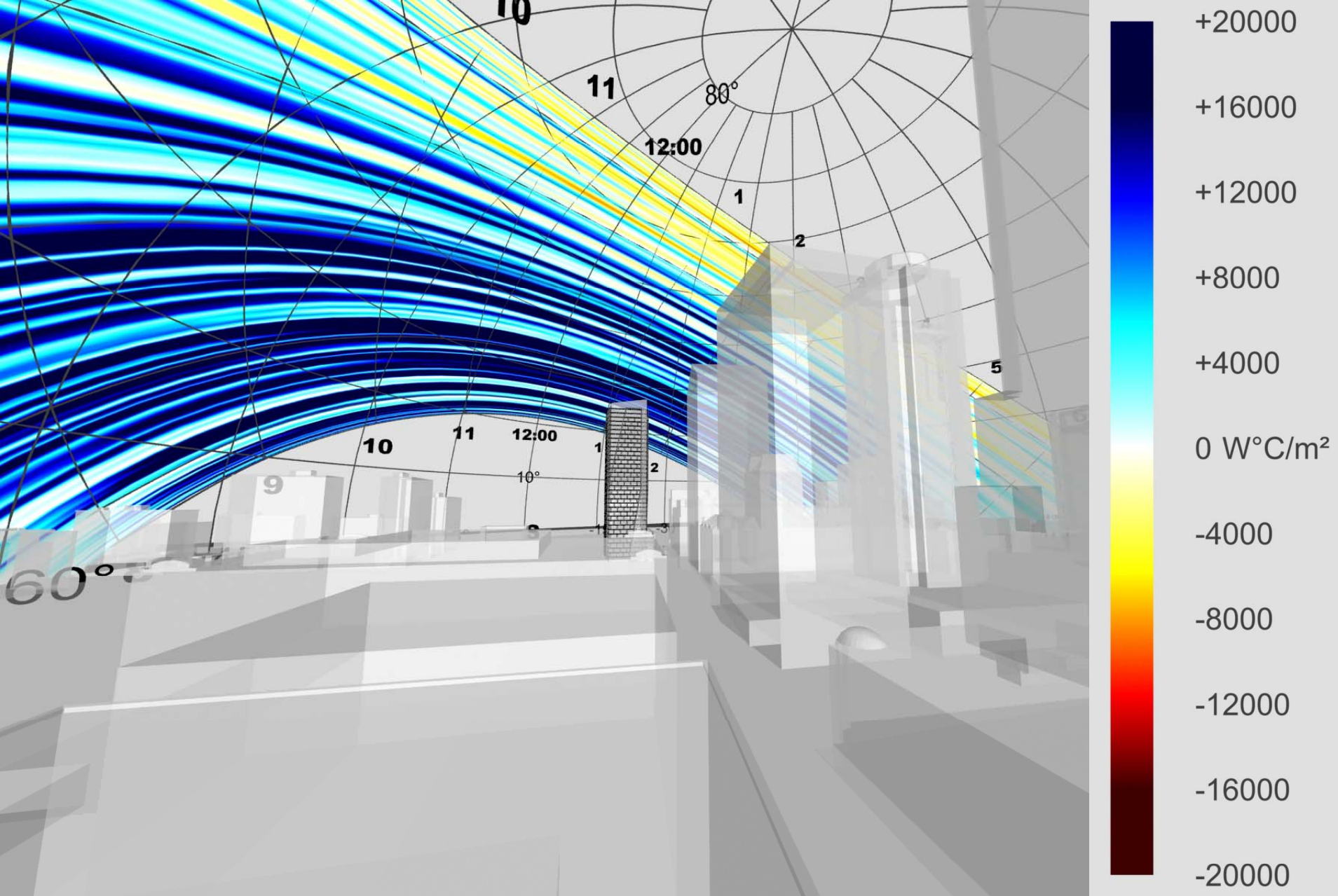
Differences between the total amount of annual radiation on different orientations and inclinations in typical meteorological year (U.S. Department of Energy TMY files)

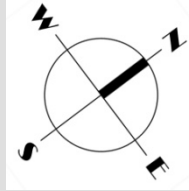
Potentials for active of strategies in Montréal (CA) is much higher comparing to those of Berlin(DE). In addition potentials for passive strategies in Montréal (CA) is also significantly high (see next slide).

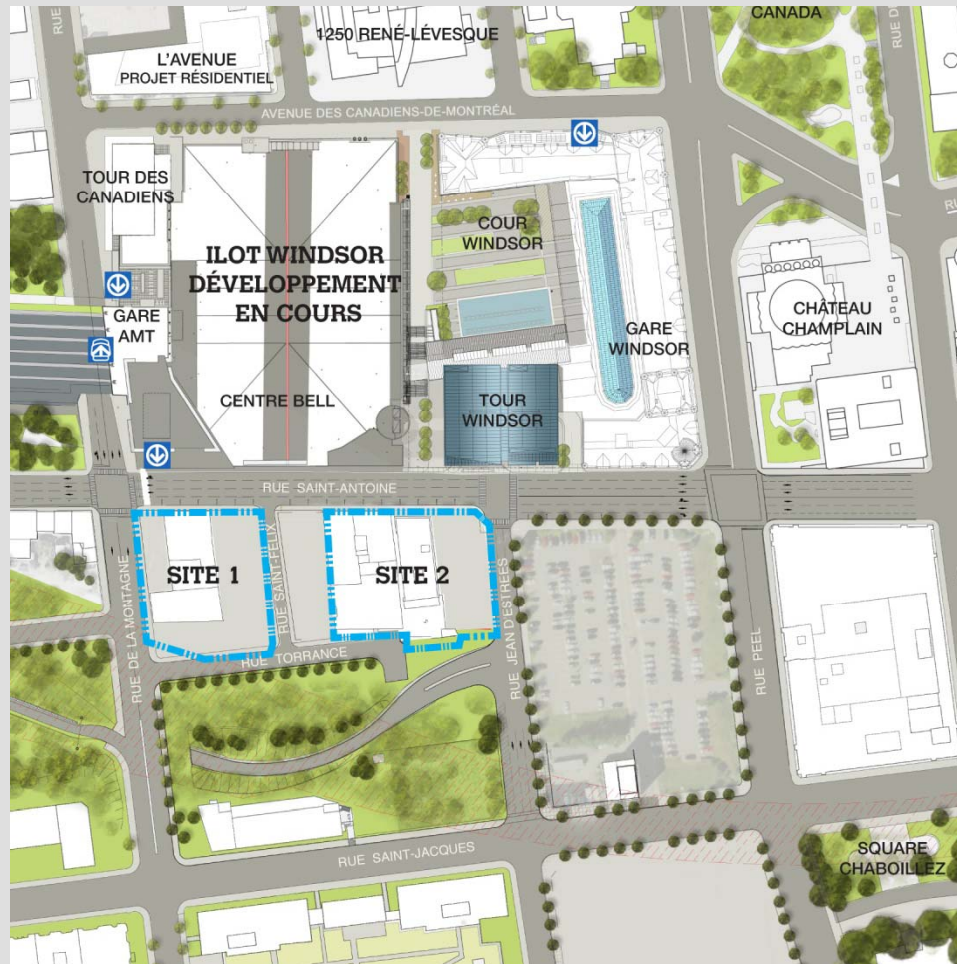
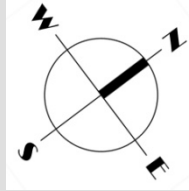


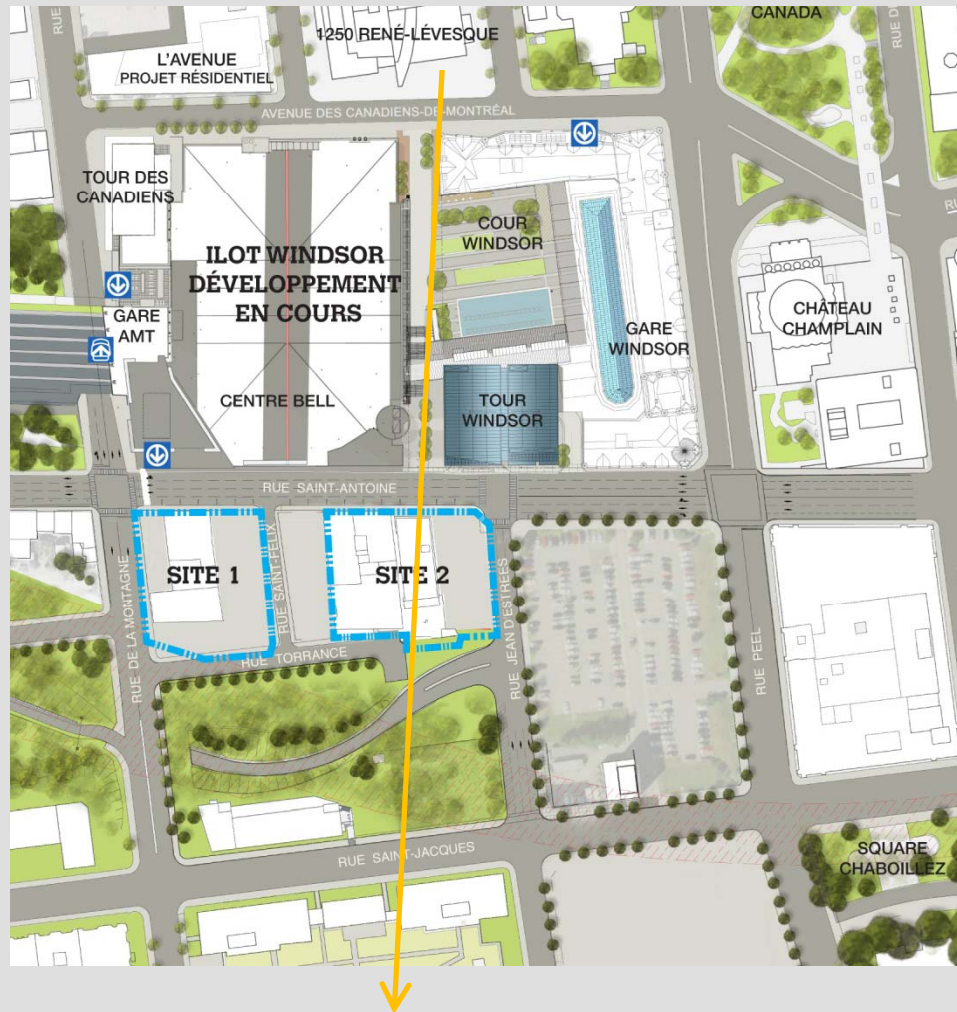
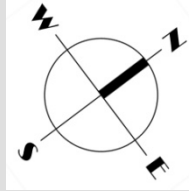
Differences between the +/- effects of direct radiation in **Montréal** (above) and **Berlin** (below)

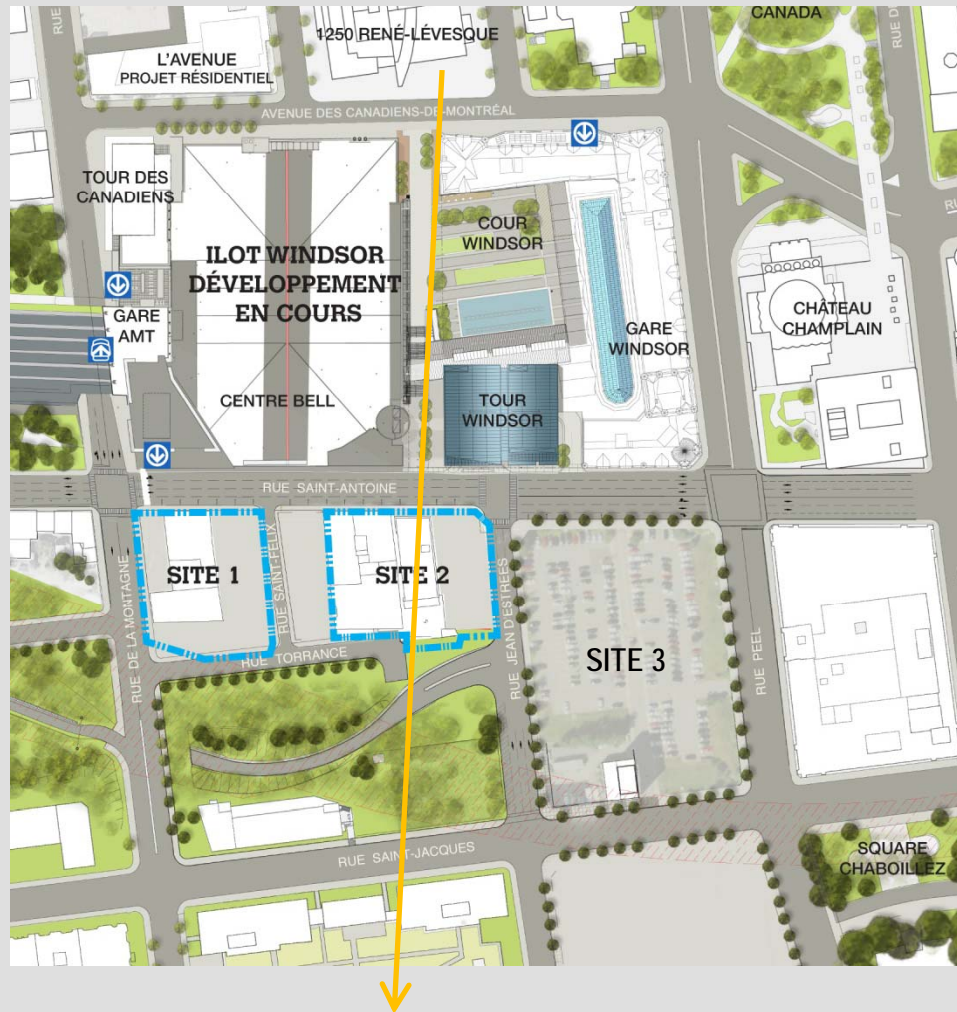
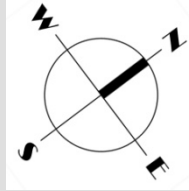


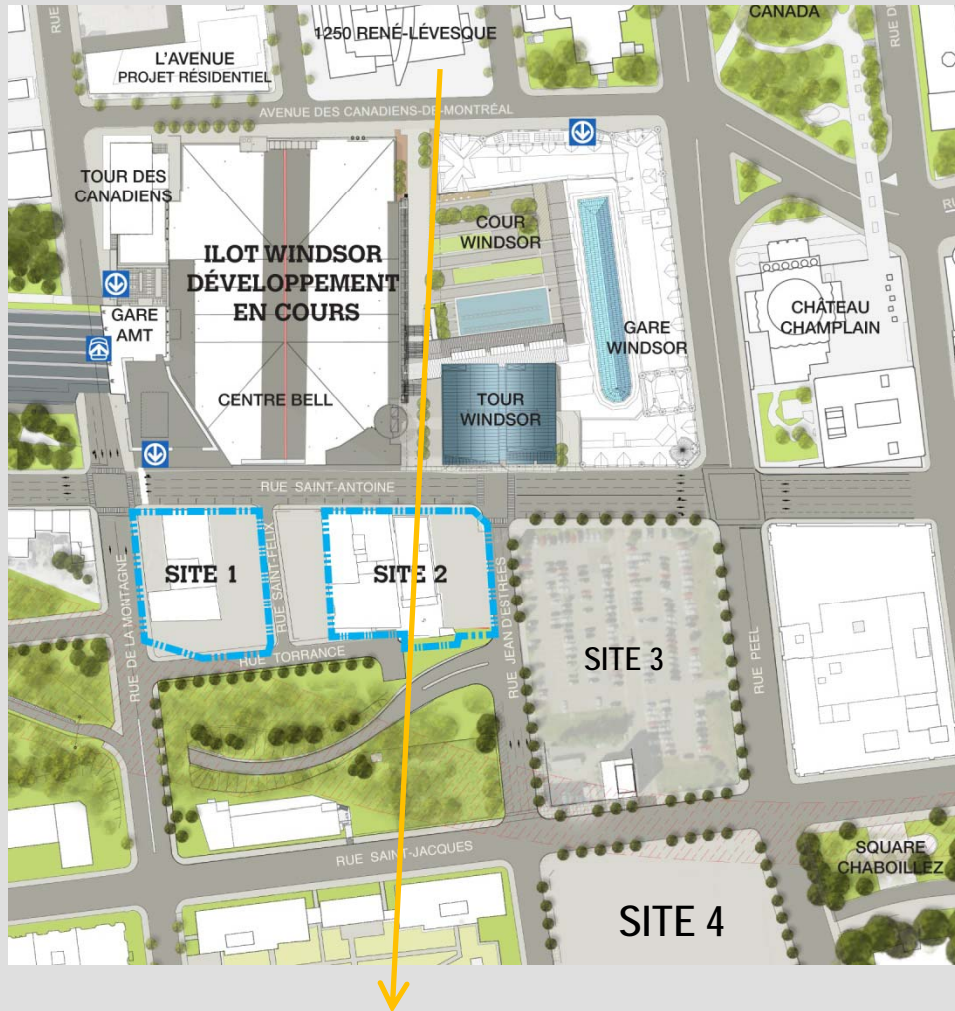
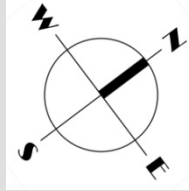


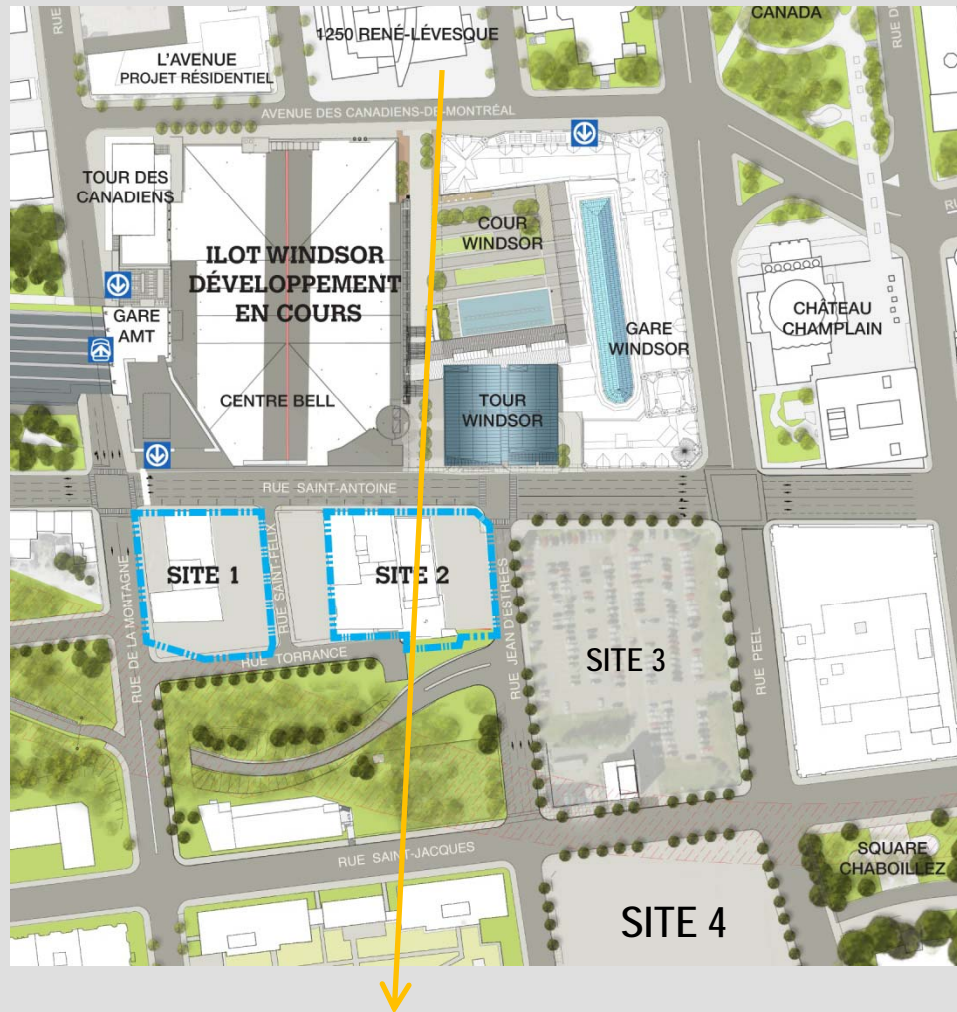
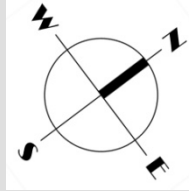






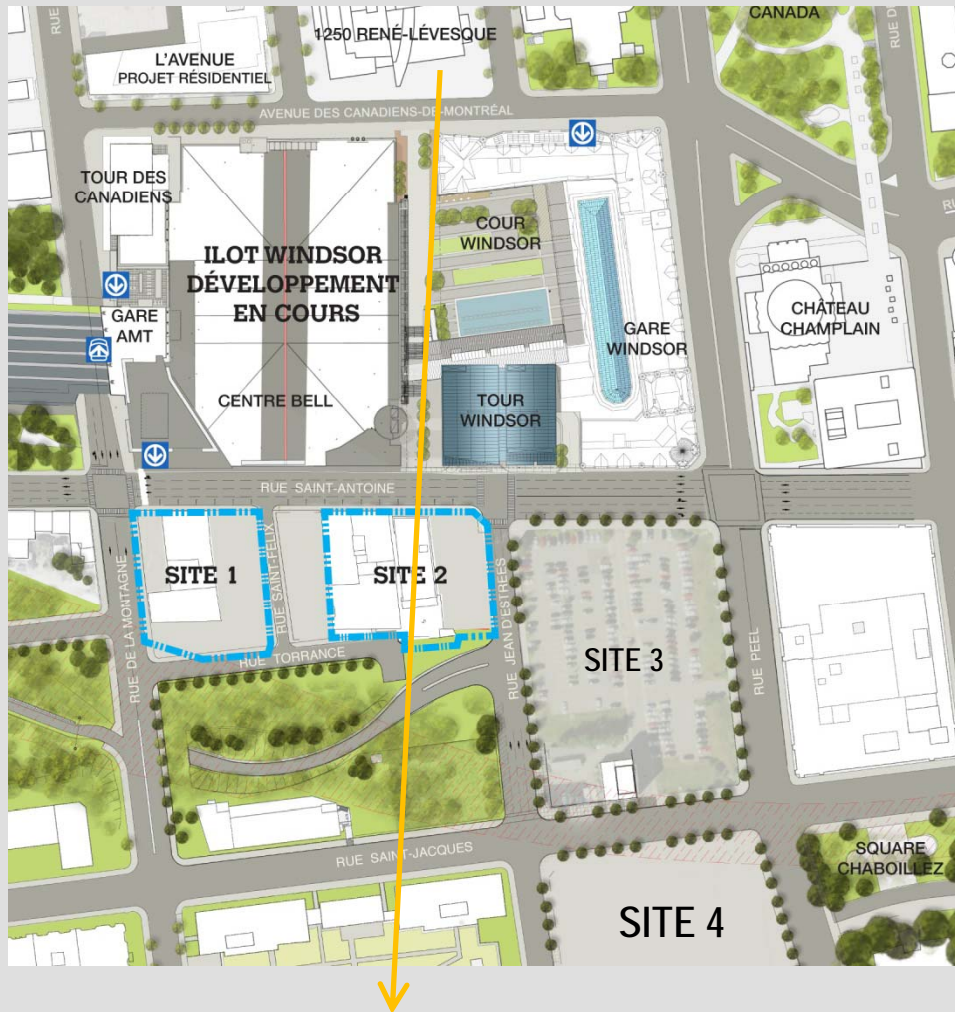
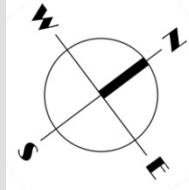






SITE 5

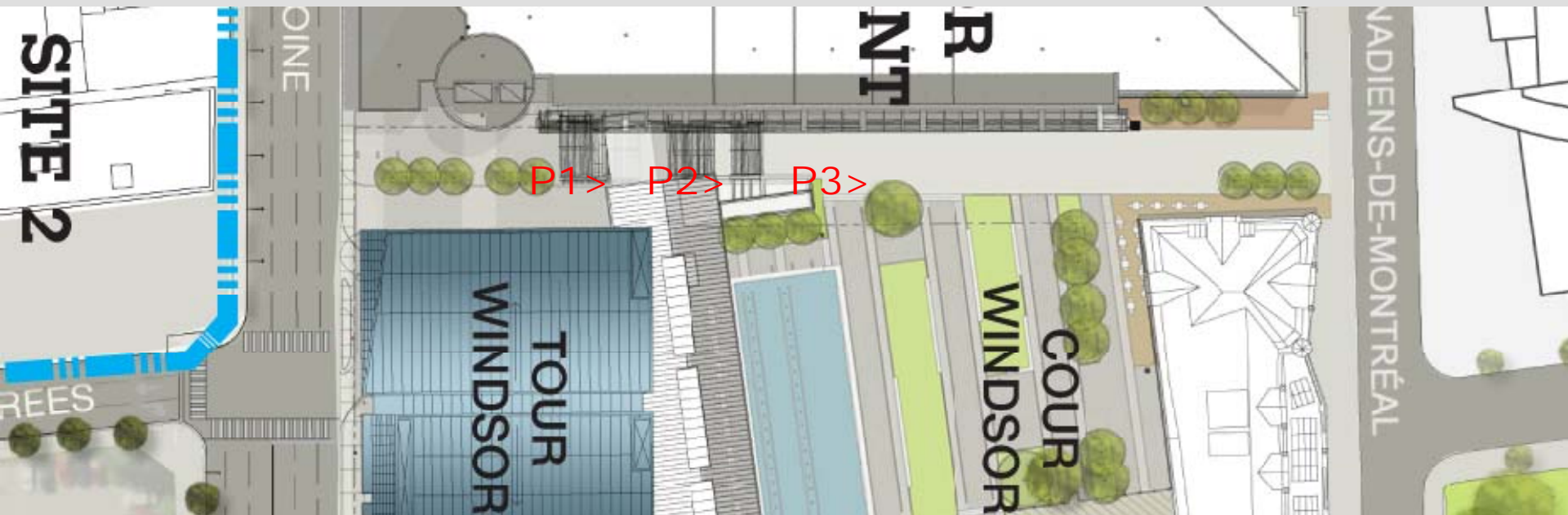


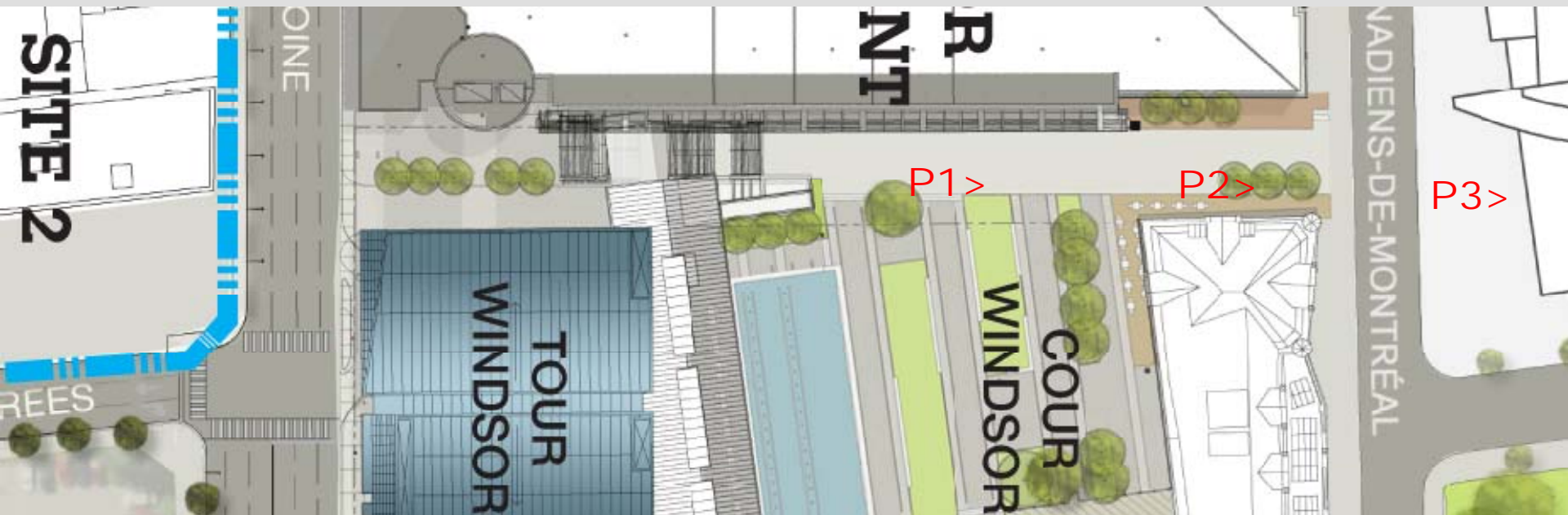


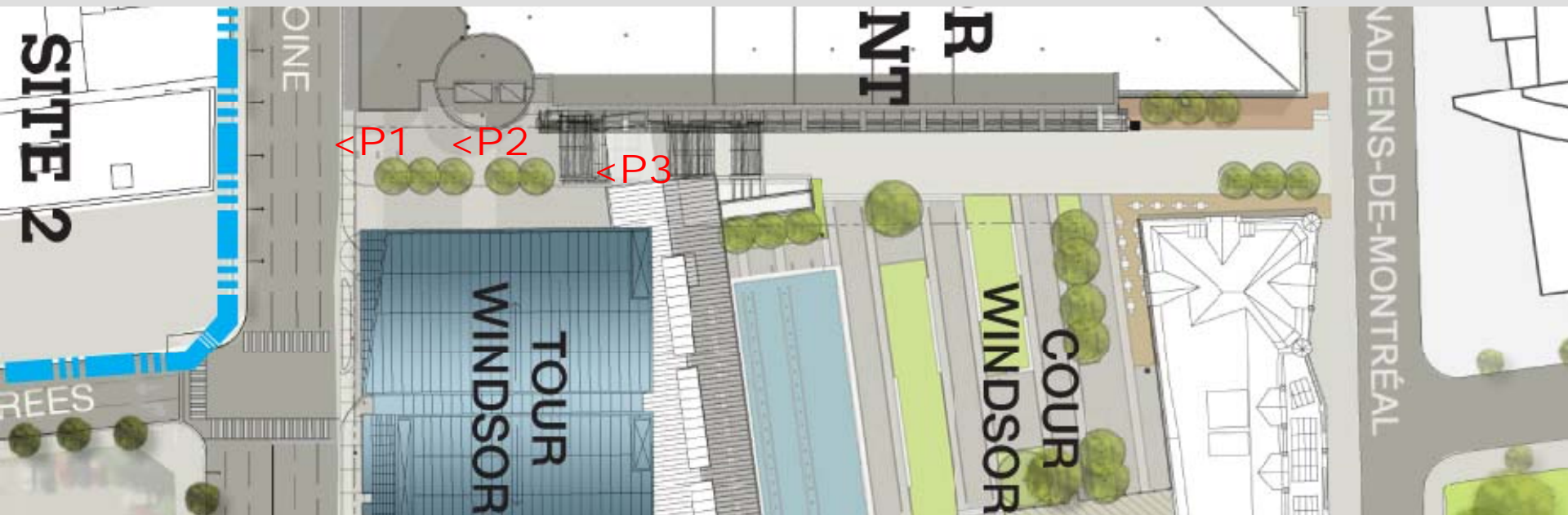
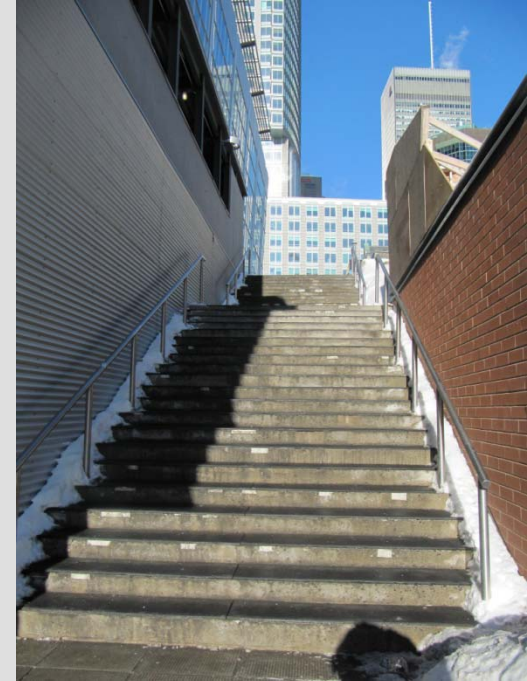
SITE 5

MORE
SITES

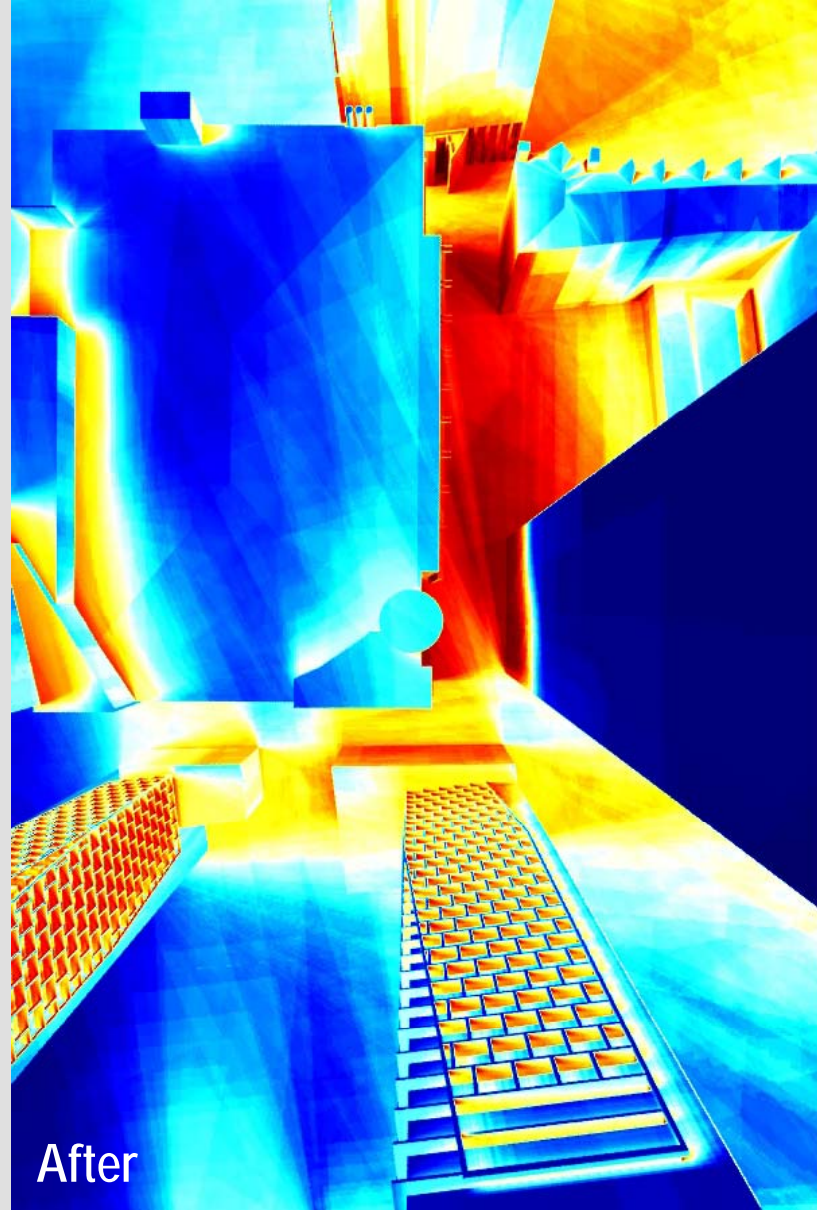
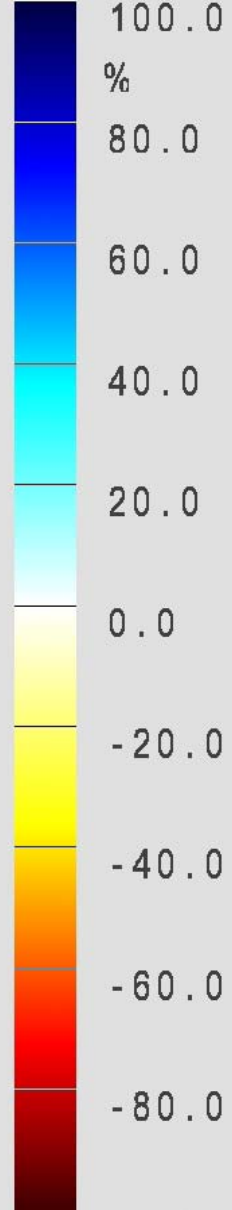
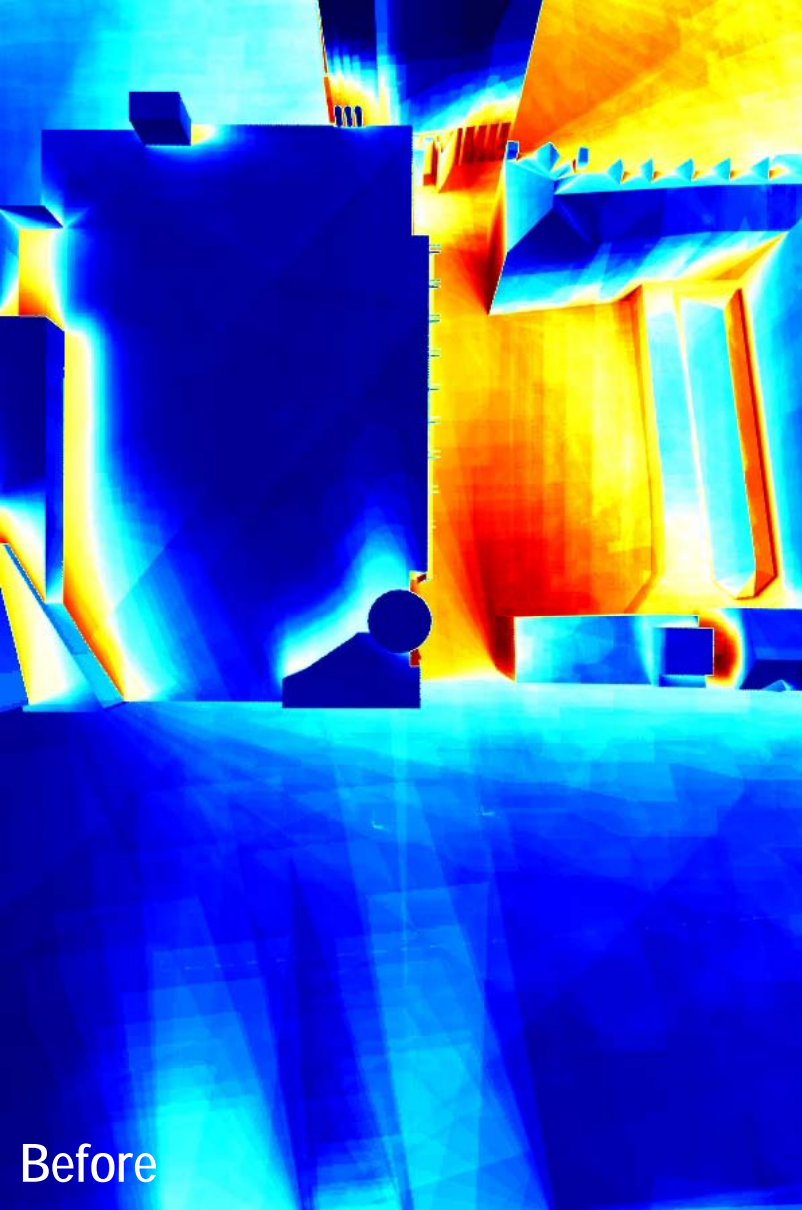








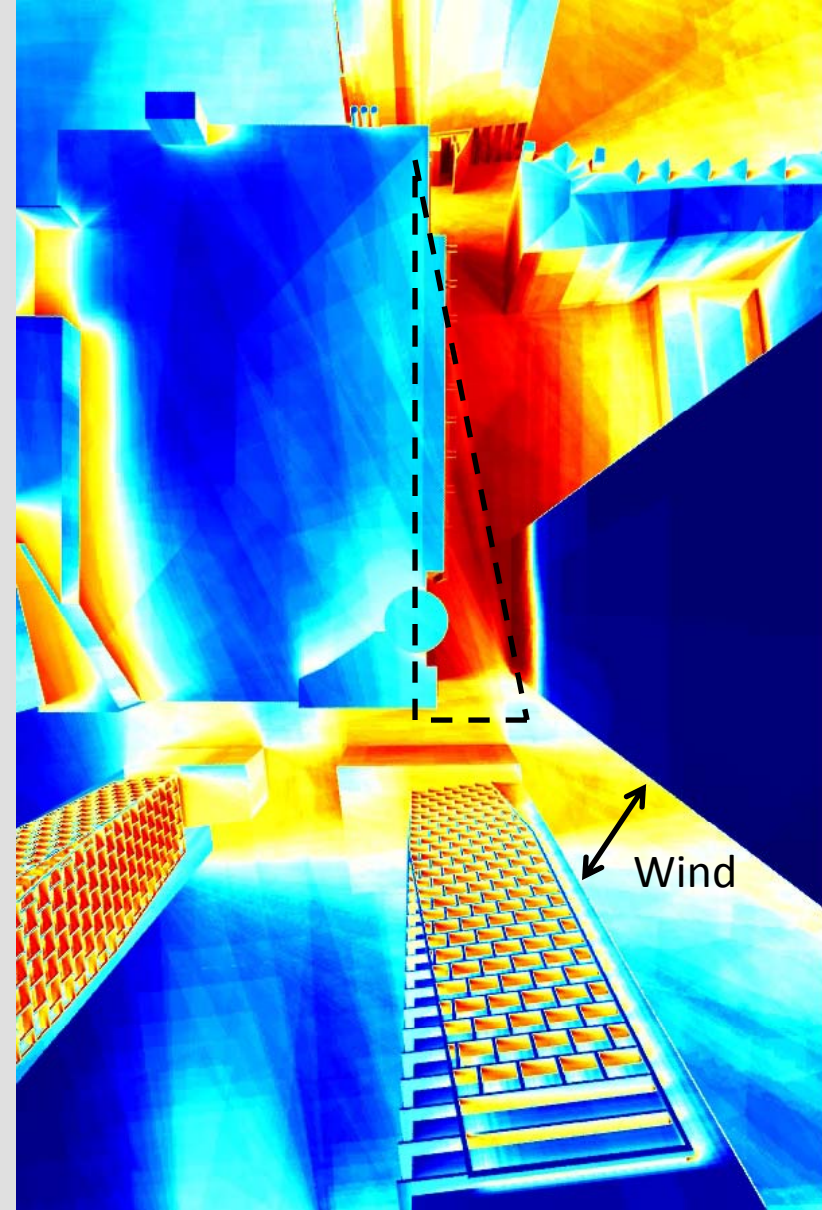
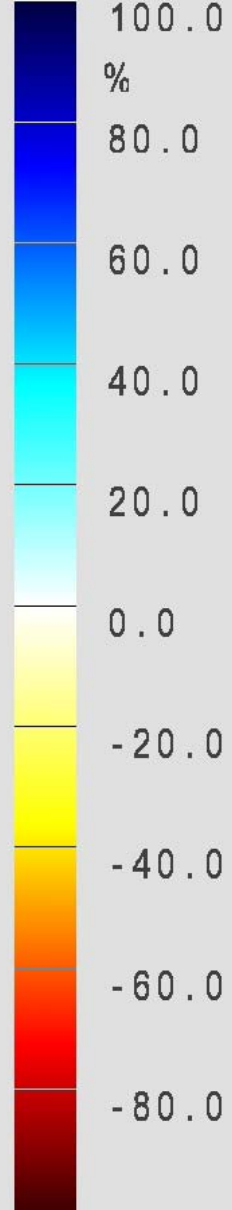
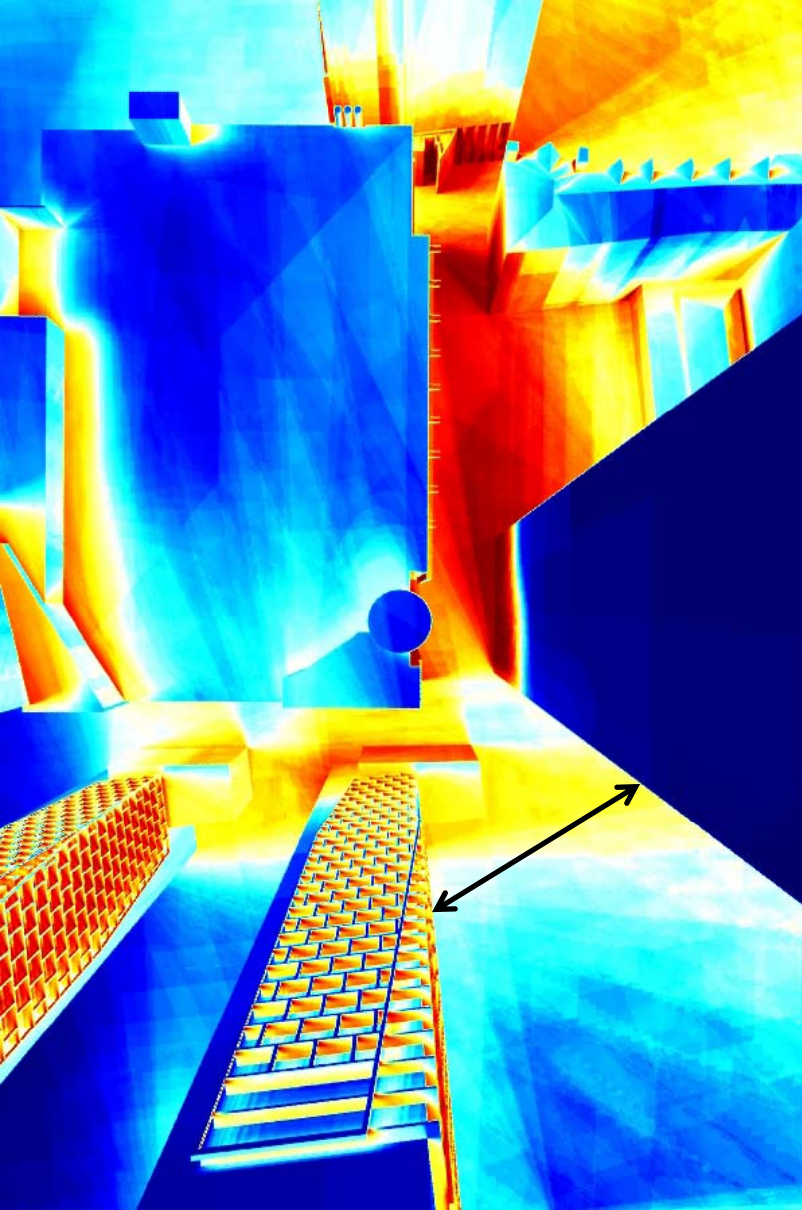




Before

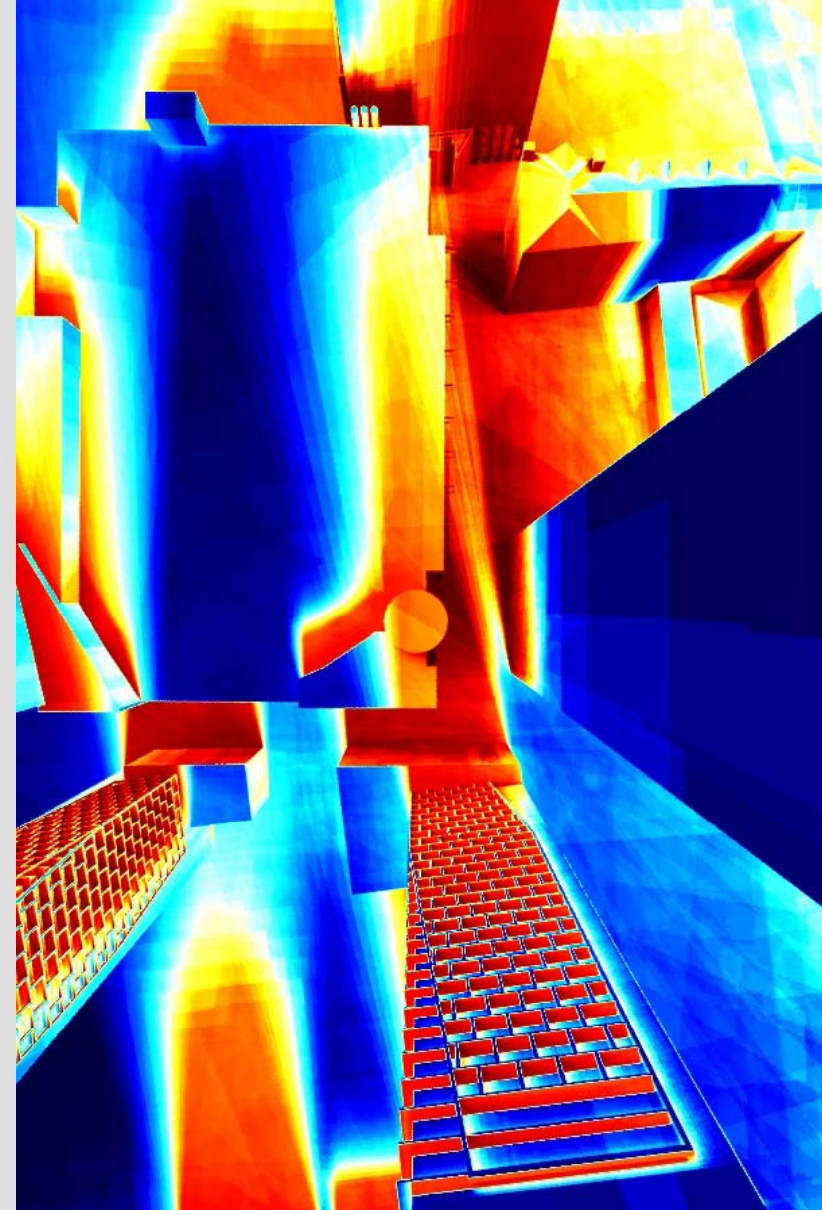
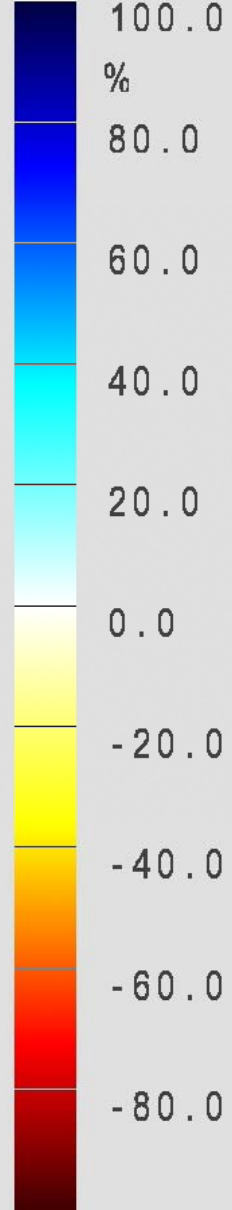
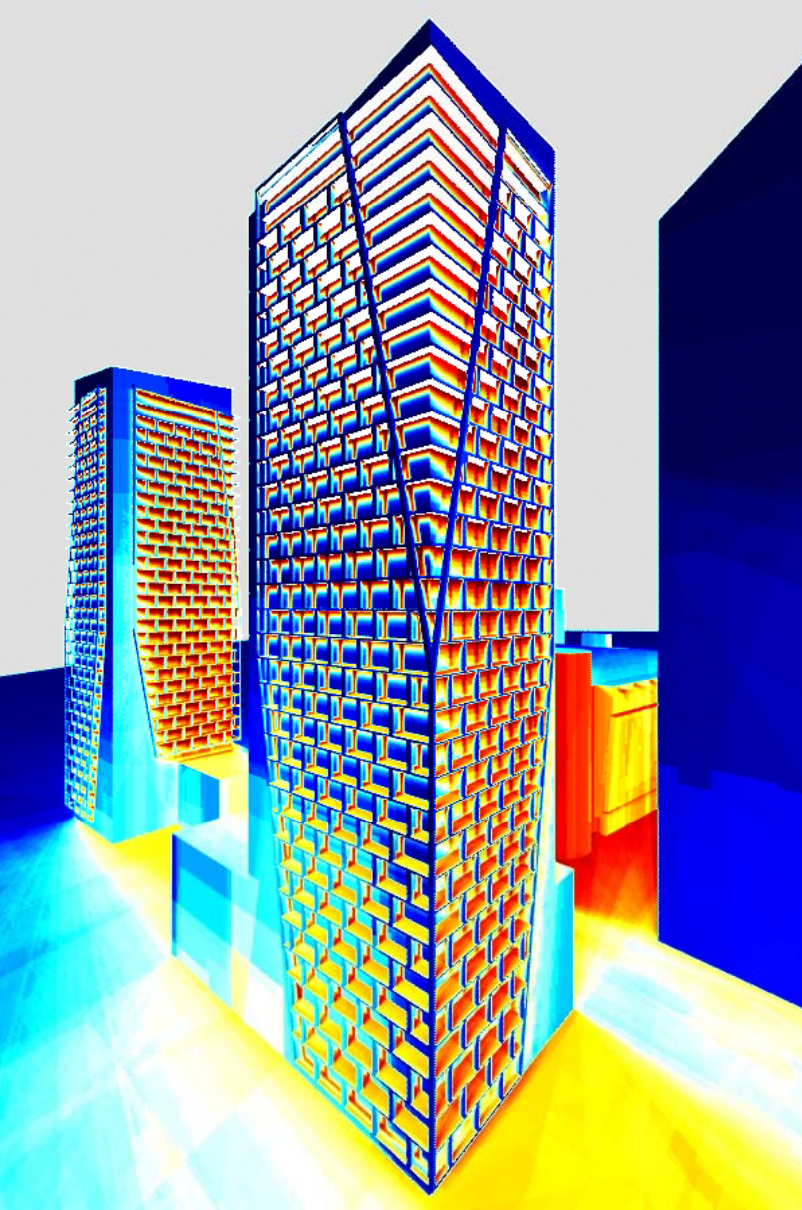
After

Annual solar-climatic performance analysis



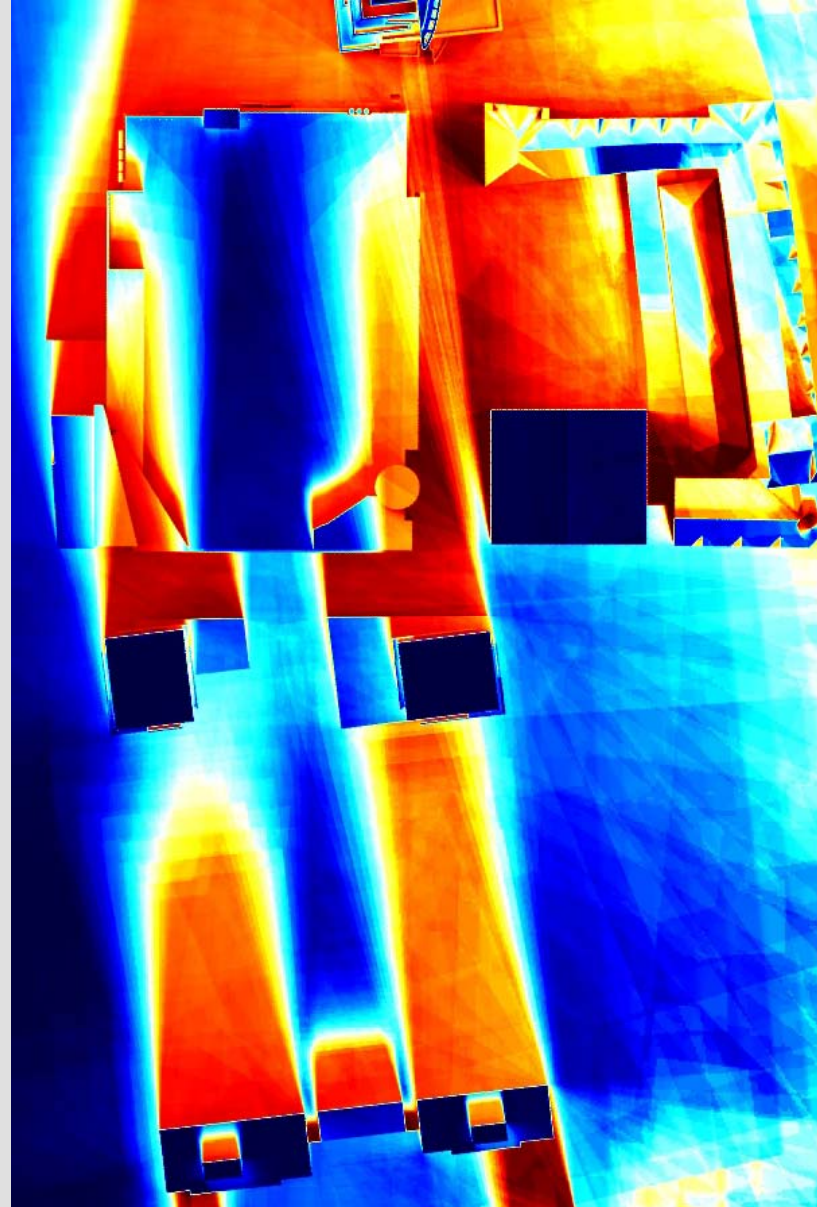
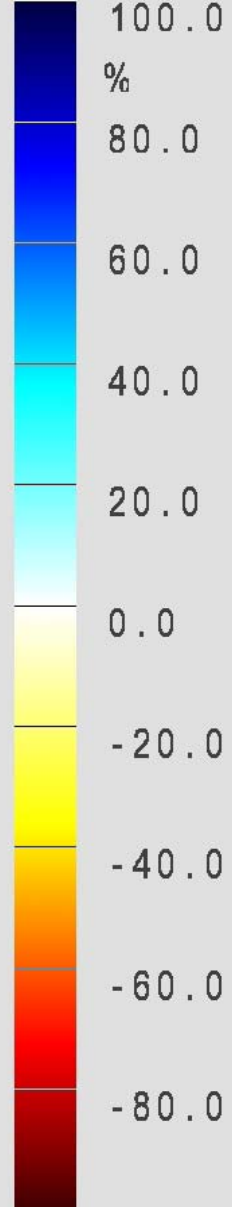
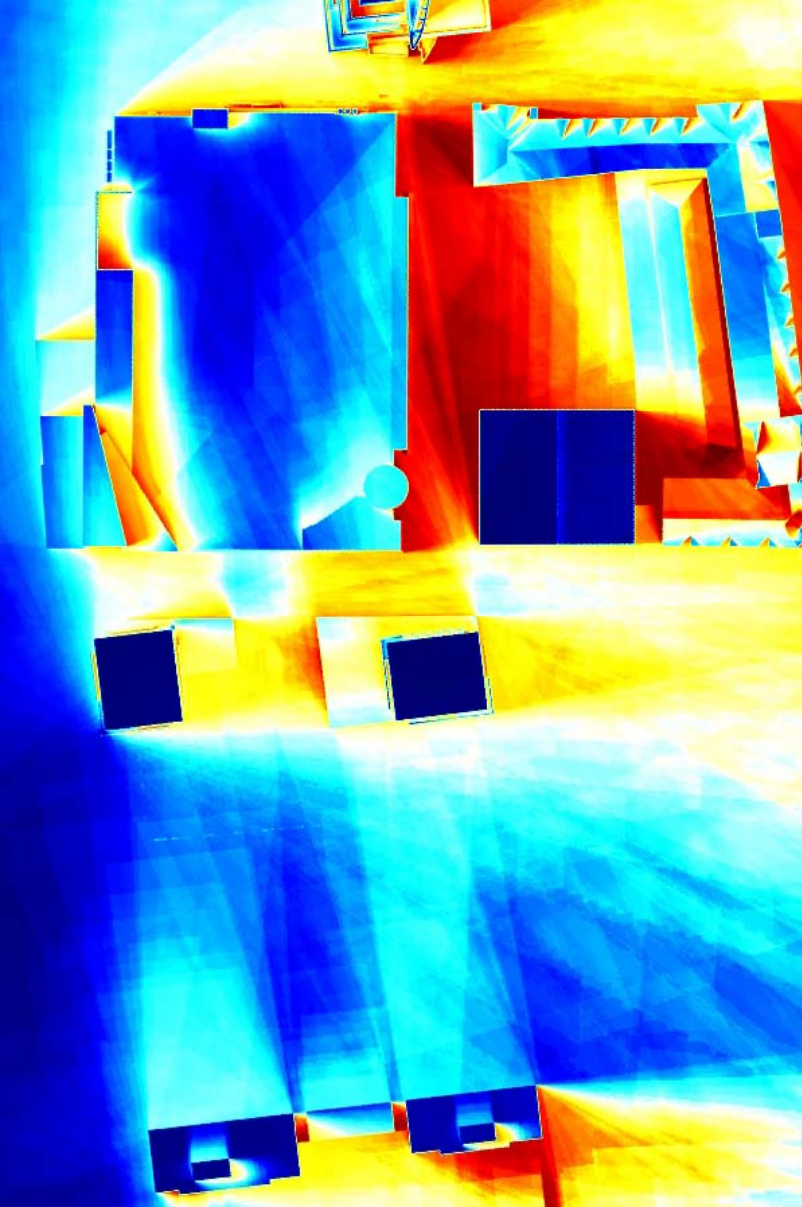
Improved version

Curent proposal

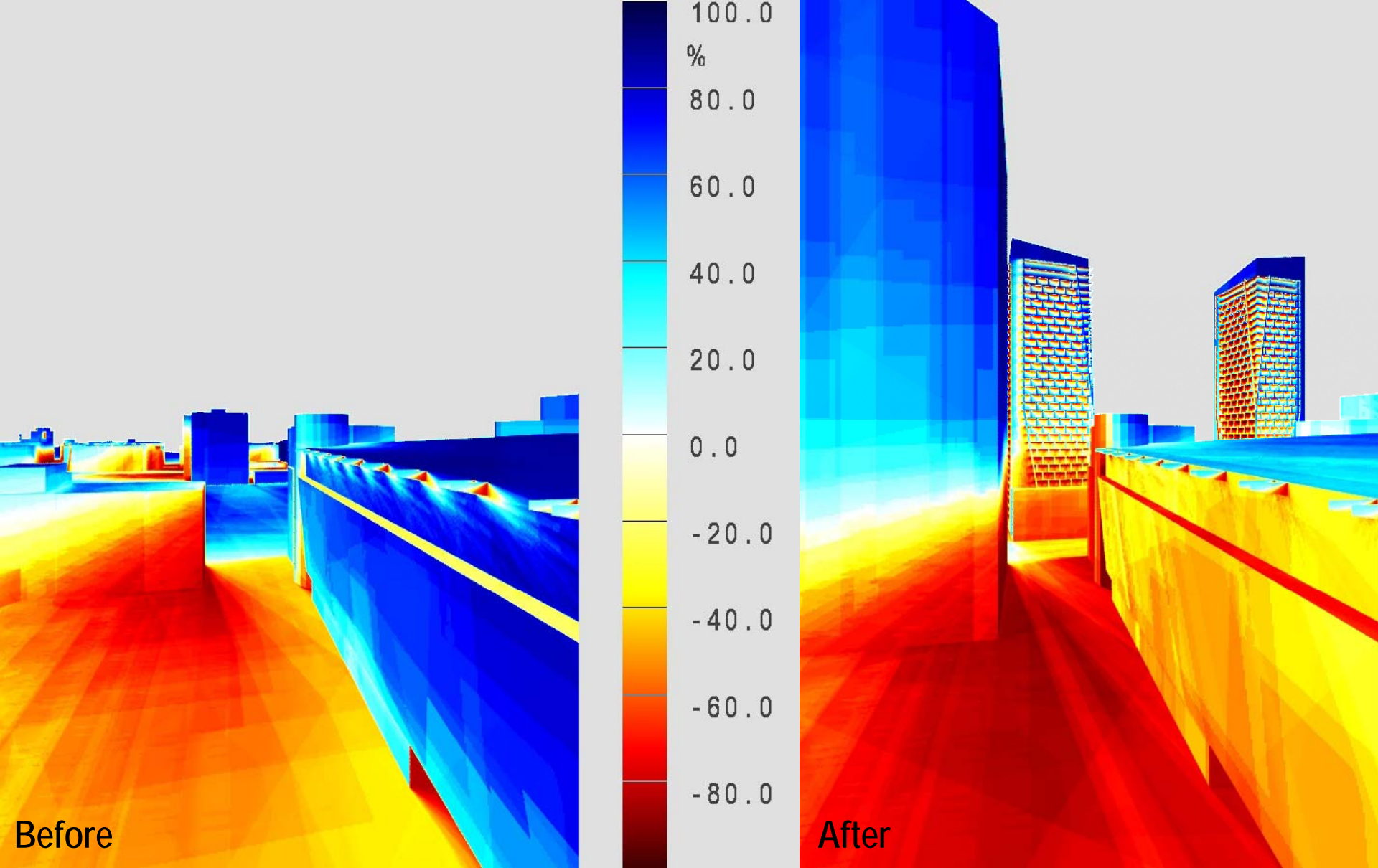


left: annual, right: partial: from 8 a.m. to 10 a.m. between December 21 and September 22





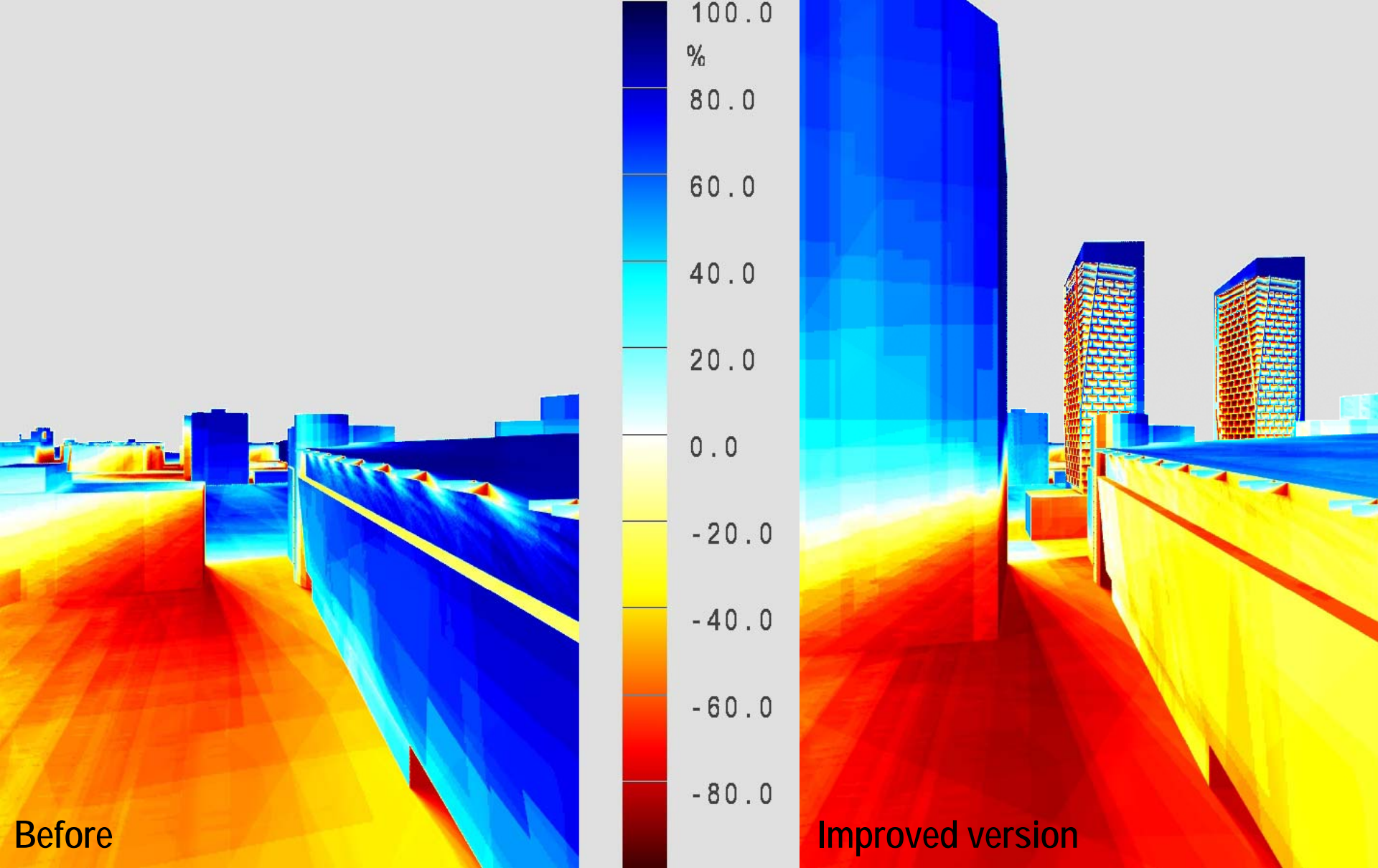
left: annual, right: partial: from 8 a.m. to 10 a.m. between December 21 and September 22



Before

After

Annual solar-climatic performance analysis



Annual solar-climatic performance analysis

on February 24, 2014

The Office de consultation publique de Montréal makes public the report on the consultation held on the draft **Montréal Development Plan**

After analysis of all the information, the commission considers that Montréal cannot escape the following three challenges:

- **Adapting the city to climate changes;**
- Taking up the demographic challenge;
- Carving out a place in the new economic environment.

In response to these three challenges and to different issues, the commission proposes to achieve 5 targets:
a compact and **efficient** city;
an inclusive and supportive city;
a city of culture and **knowledge**;
a **green** city;
a thriving city.



In terms of adapting the city to climate changes:

Such changes lead to serious problems in terms of public **health, life** and property **safety** and **pollution** – a 20 to 30% increase in the mortality rate was recorded in certain heat islands during the latest heat waves, not to mention **the major inconveniences associated with periods of extreme cold**; the drop in air quality during smog episodes; the flooding of certain areas of the city in heavy rains; or the pollution of shorelines and waterways resulting from overflows.

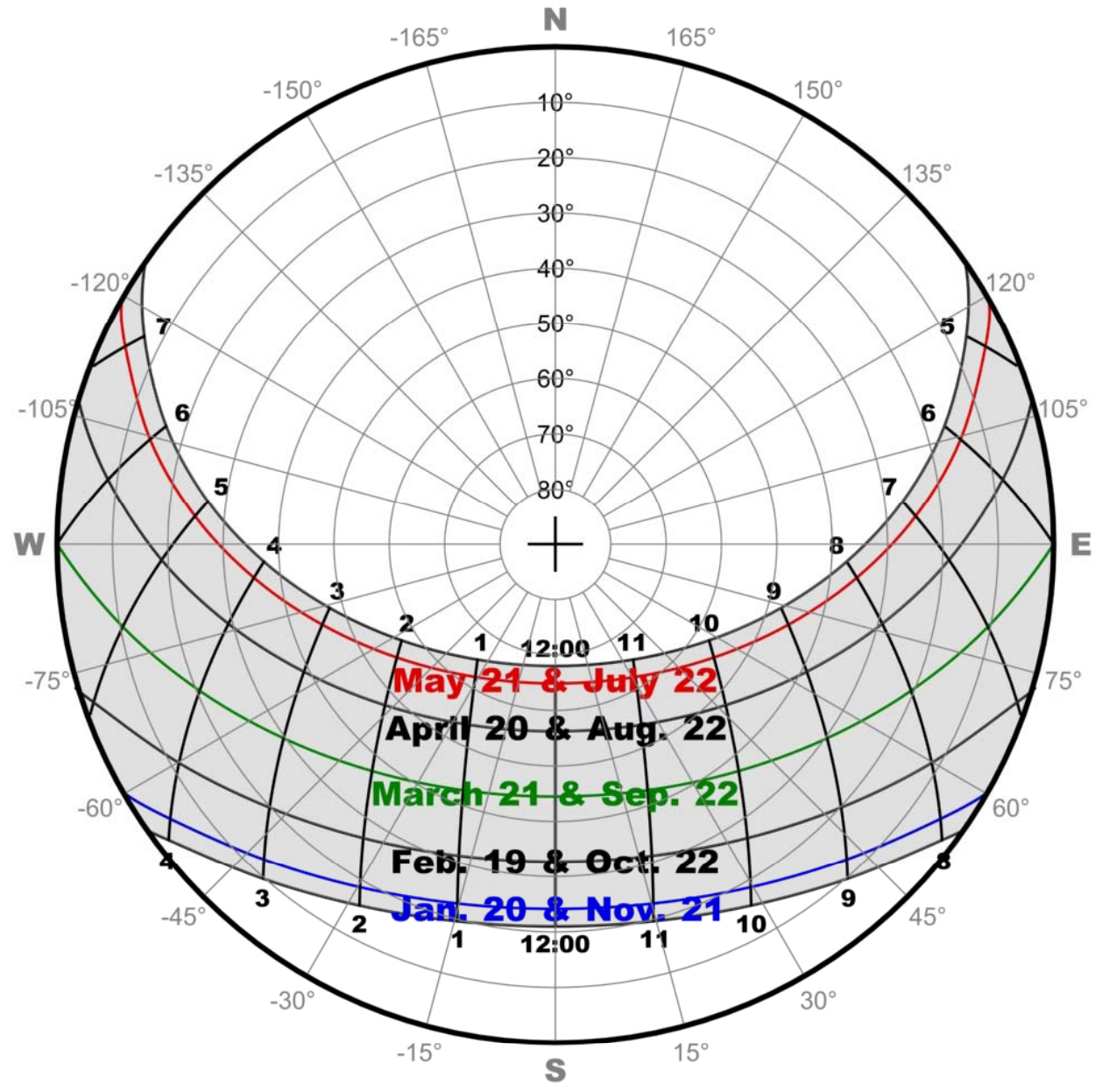
The commission recommends the adoption of a Montréal climate change **adaptation plan that would ensure such consistency**

One of the recommendations:

-Make **pedestrian safety and comfort** the basic principle of Montréal's approach to travel management;



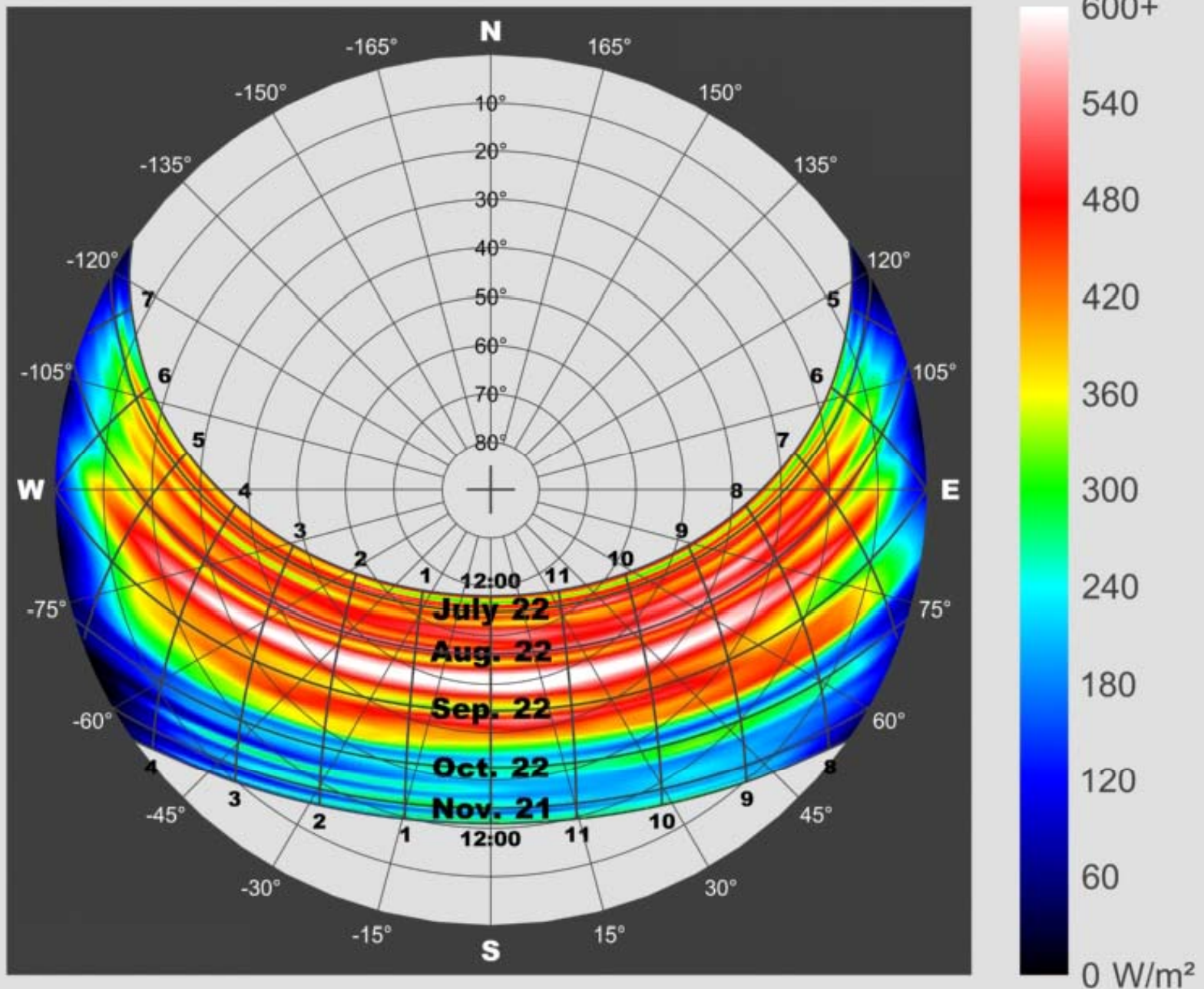
Montréal Sun Path



Montréal Solar Radiation Direct Beam

(2001 – 05)

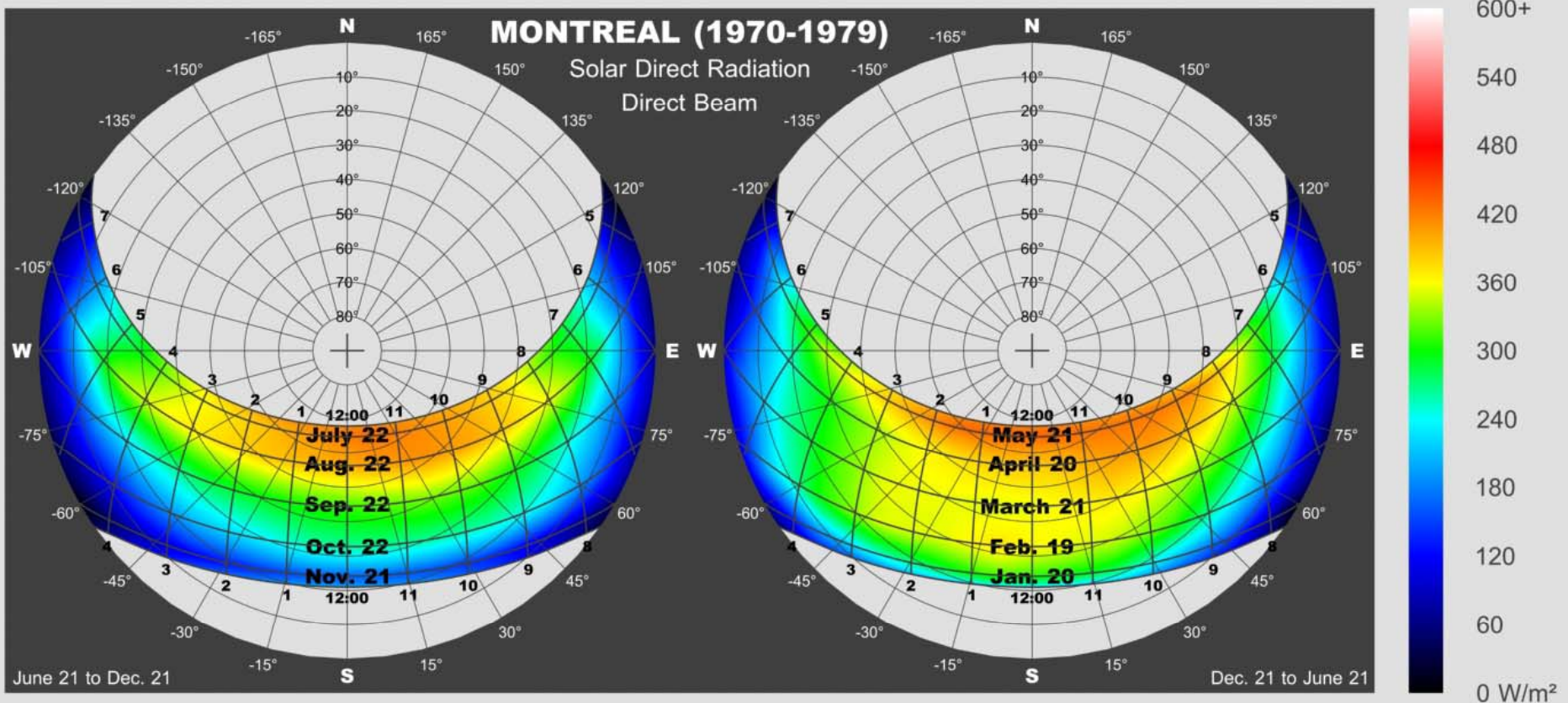
SOLARCHVISION
standardization
based on Canadian
Weather
Energy and
Engineering
Datasets



Montréal

Pattern of Direct Solar Radiation: 1970's

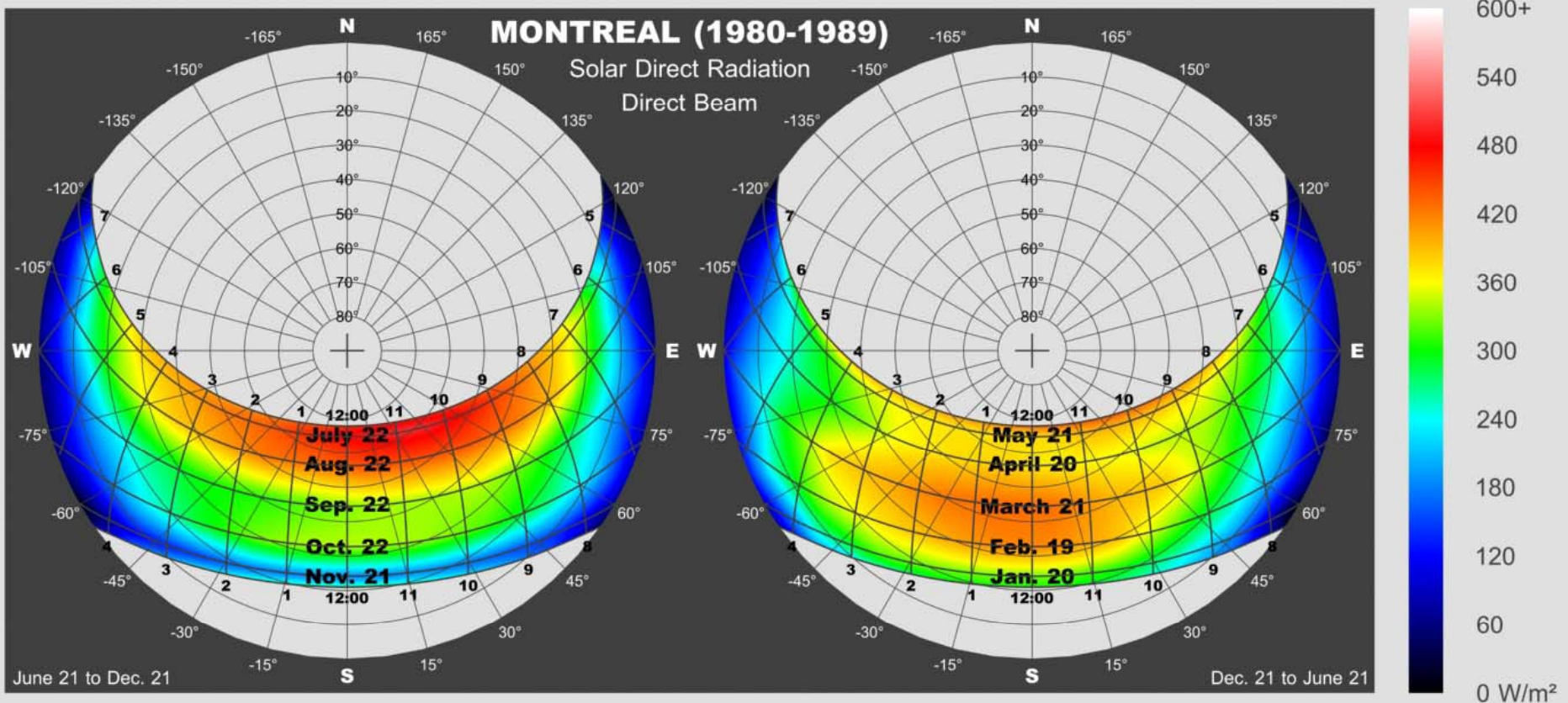
SOLARCHVISION standardization based on Canadian Weather Energy and Engineering Datasets



Montréal

Pattern of Direct Solar Radiation: 1980's

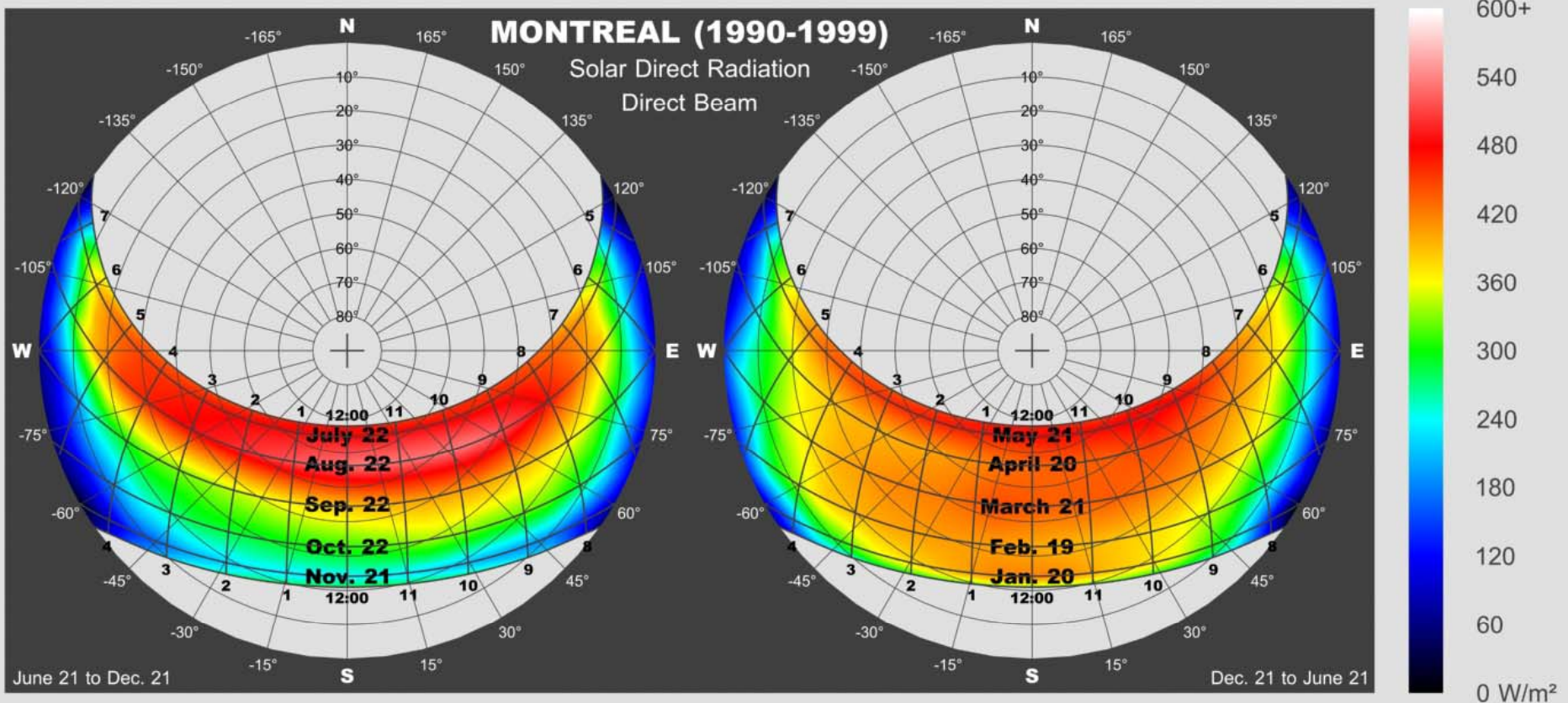
SOLARCHVISION standardization based on Canadian Weather Energy and Engineering Datasets



Montréal

Pattern of Direct Solar Radiation: 1990's

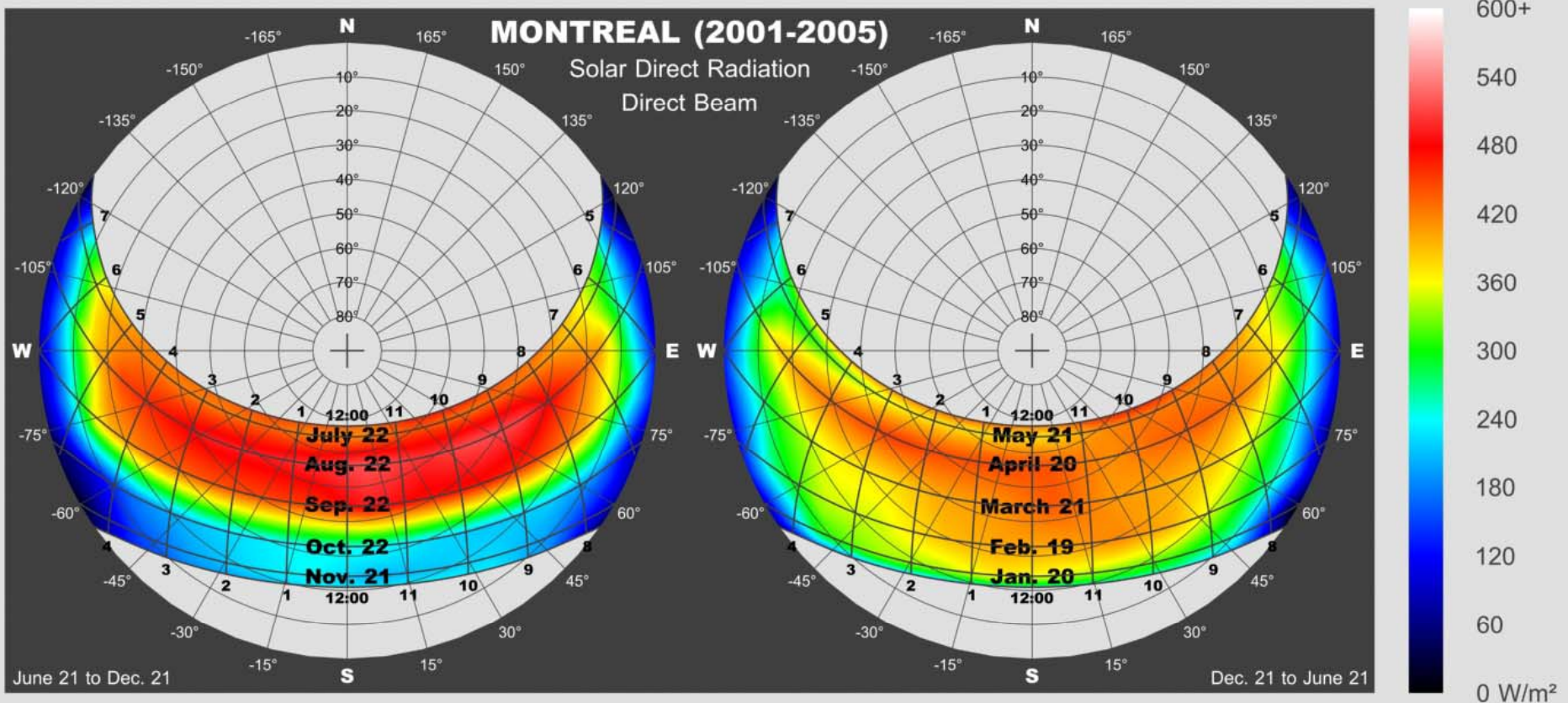
SOLARCHVISION standardization based on Canadian Weather Energy and Engineering Datasets



Montréal

Pattern of Direct Solar Radiation: 2000's

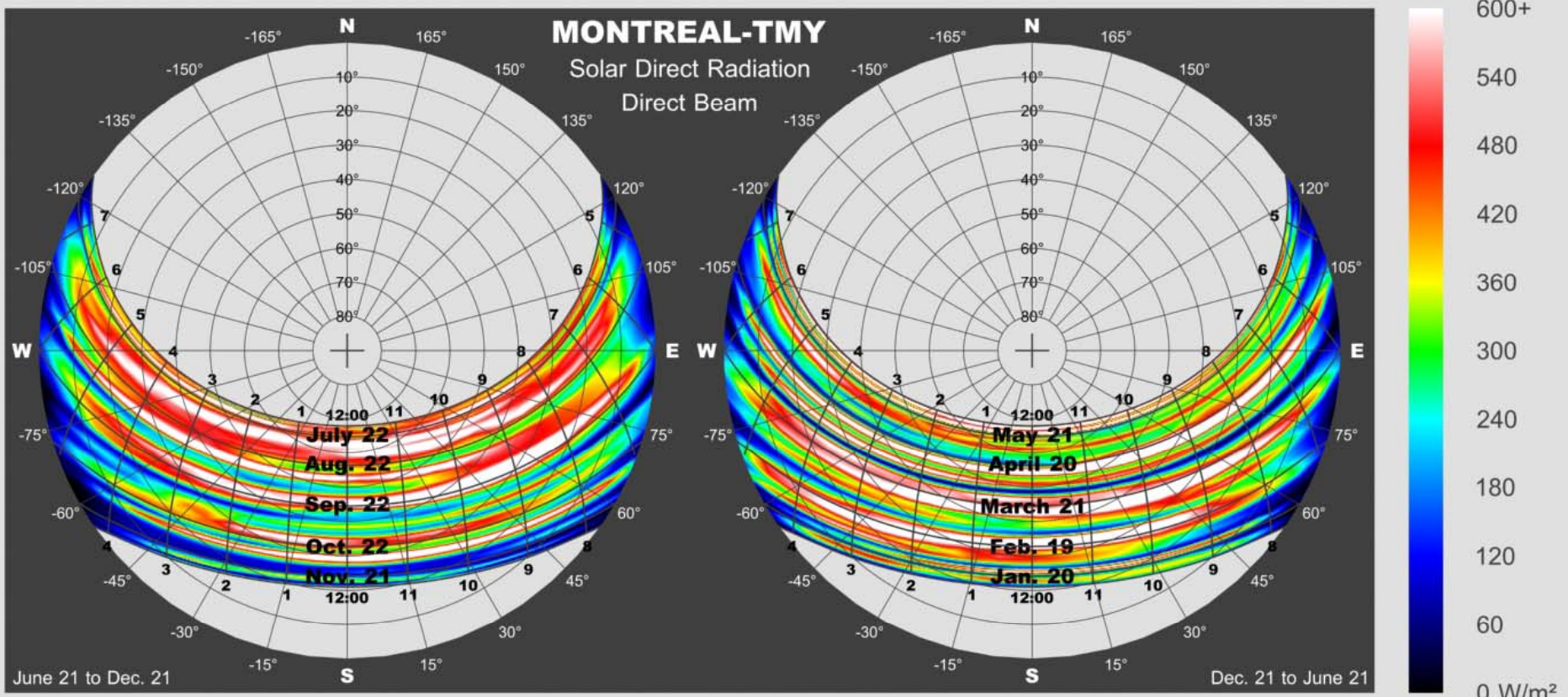
SOLARCHVISION standardization based on Canadian Weather Energy and Engineering Datasets



Montréal

Solar Radiation Model in Typical Meteorological Year

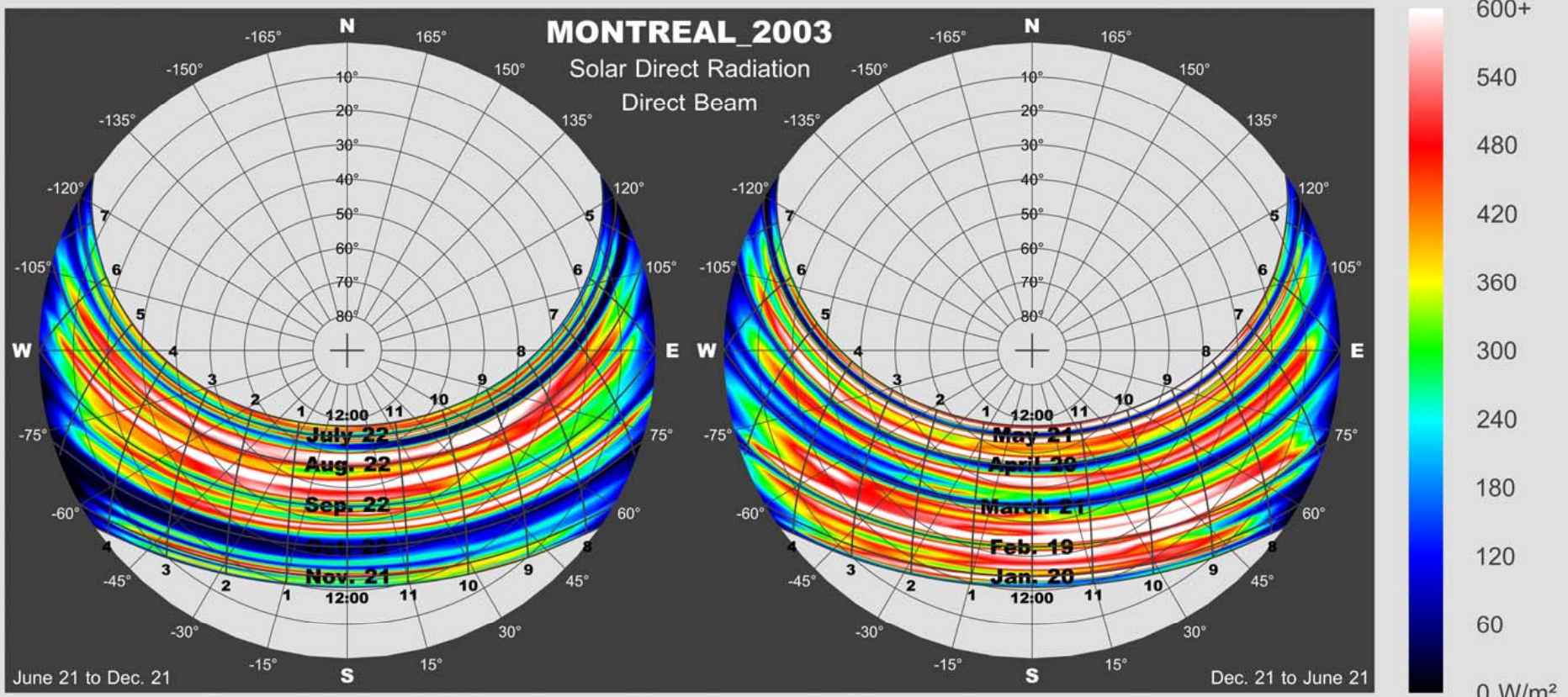
SOLARCHVISION standardization based on
U.S. Department of Energy TMY Datasets



Montréal

Solar Radiation Model in 2003

SOLARCHVISION standardization based on Canadian Weather Energy and Engineering Datasets

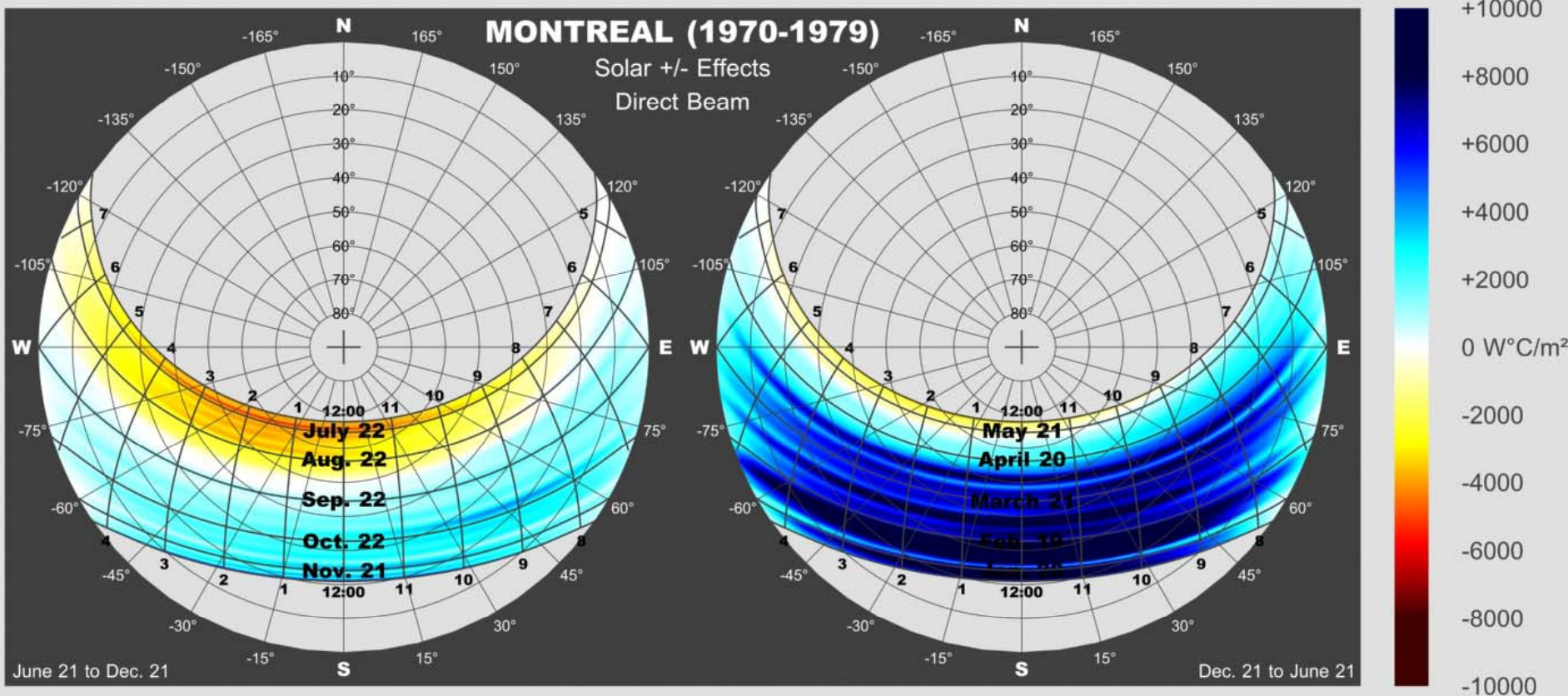


A year with extreme minimum air temperatures is more sunny in winter.

Montréal

1970's Solar Positive and Negative Effects

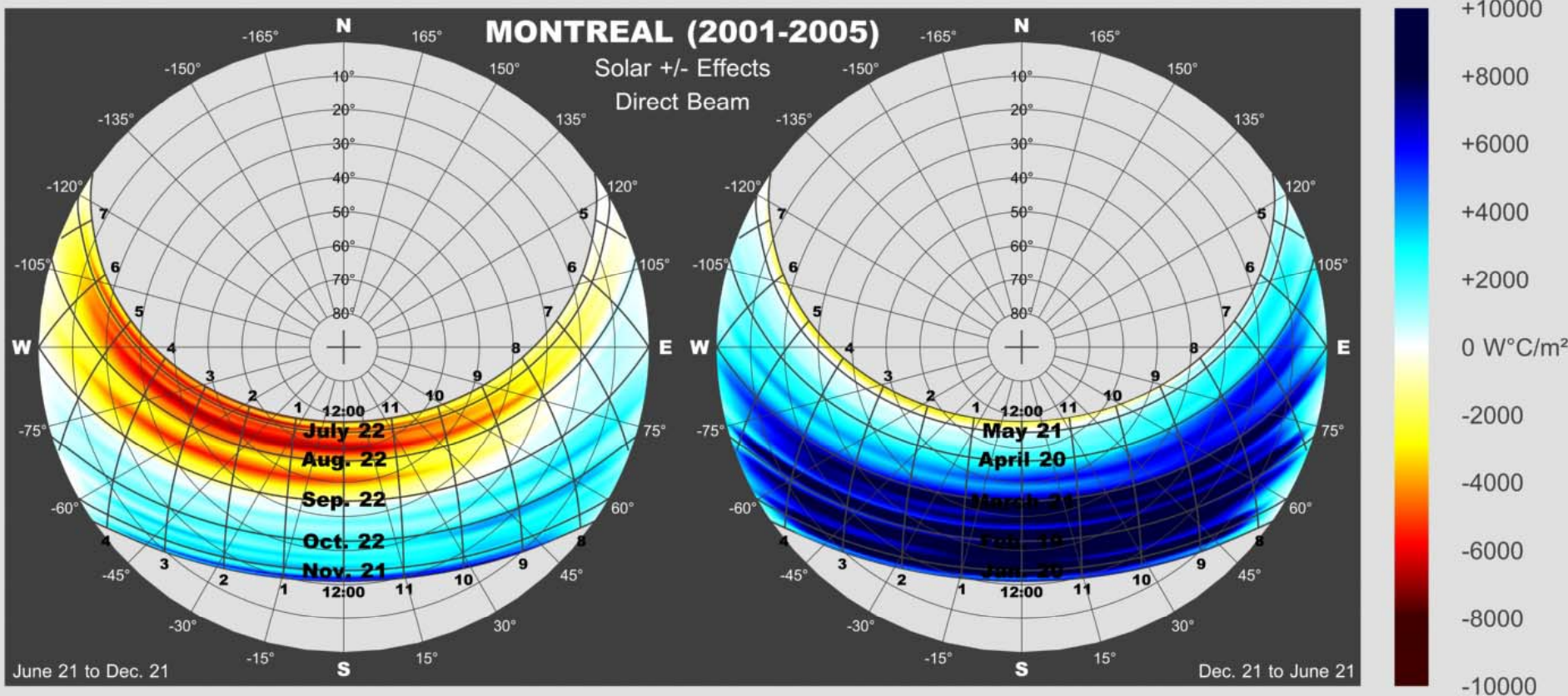
SOLARCHVISION calculations based on Canadian Weather Energy and Engineering Datasets



Montréal

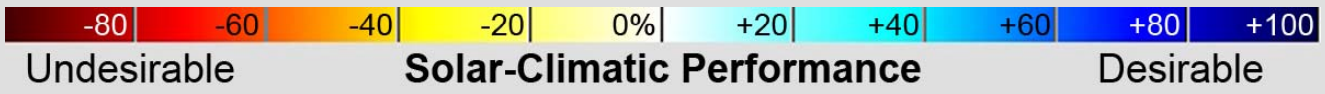
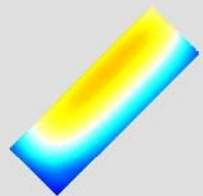
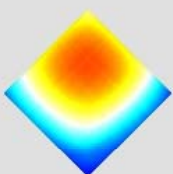
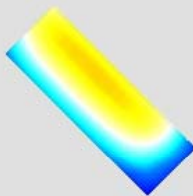
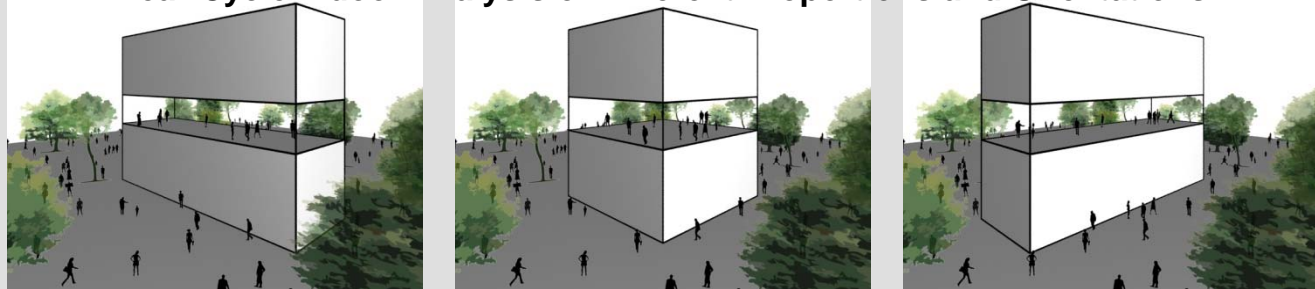
2000's Solar Positive and Negative Effects

SOLARCHVISION calculations based on Canadian Weather Energy and Engineering Datasets

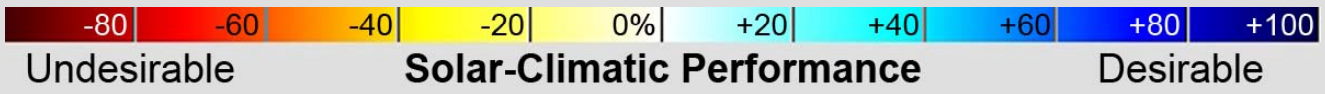
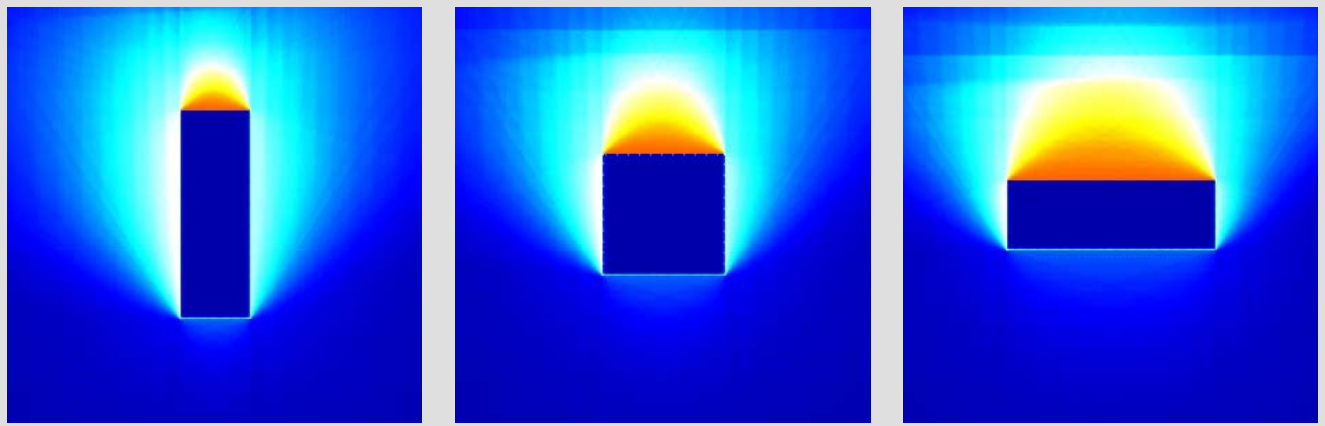
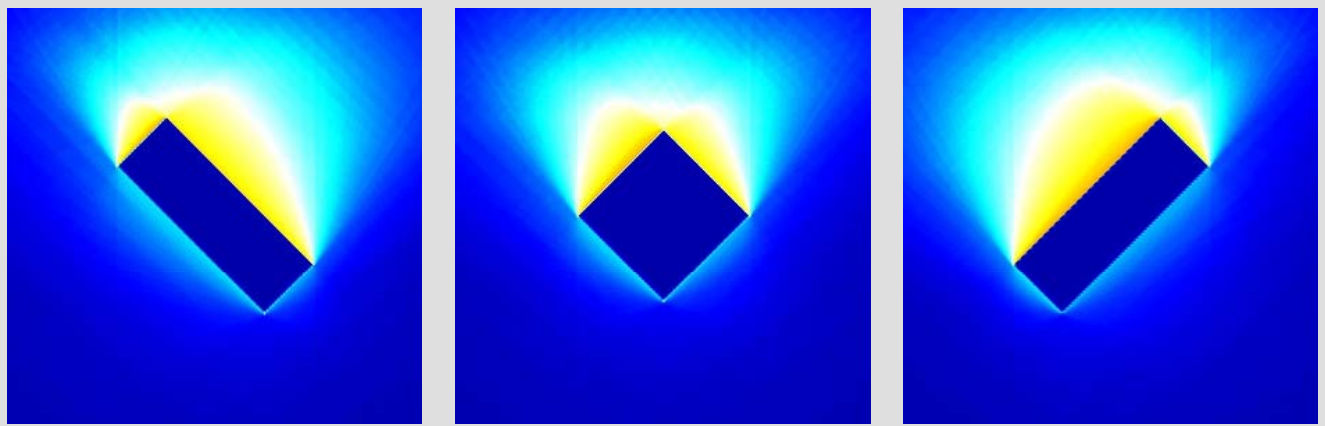
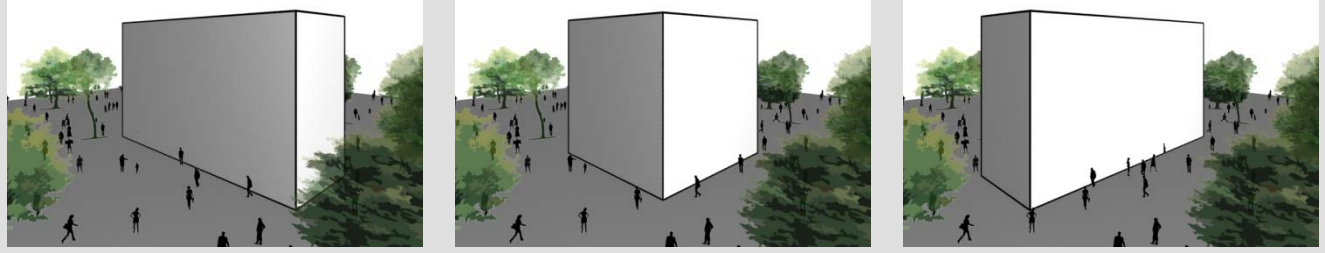


As a result of Climate Change significant increase in the amount of direct solar radiation in Montréal increases the **negative** and **positive** impacts of the sun BOTH in summer and winter.

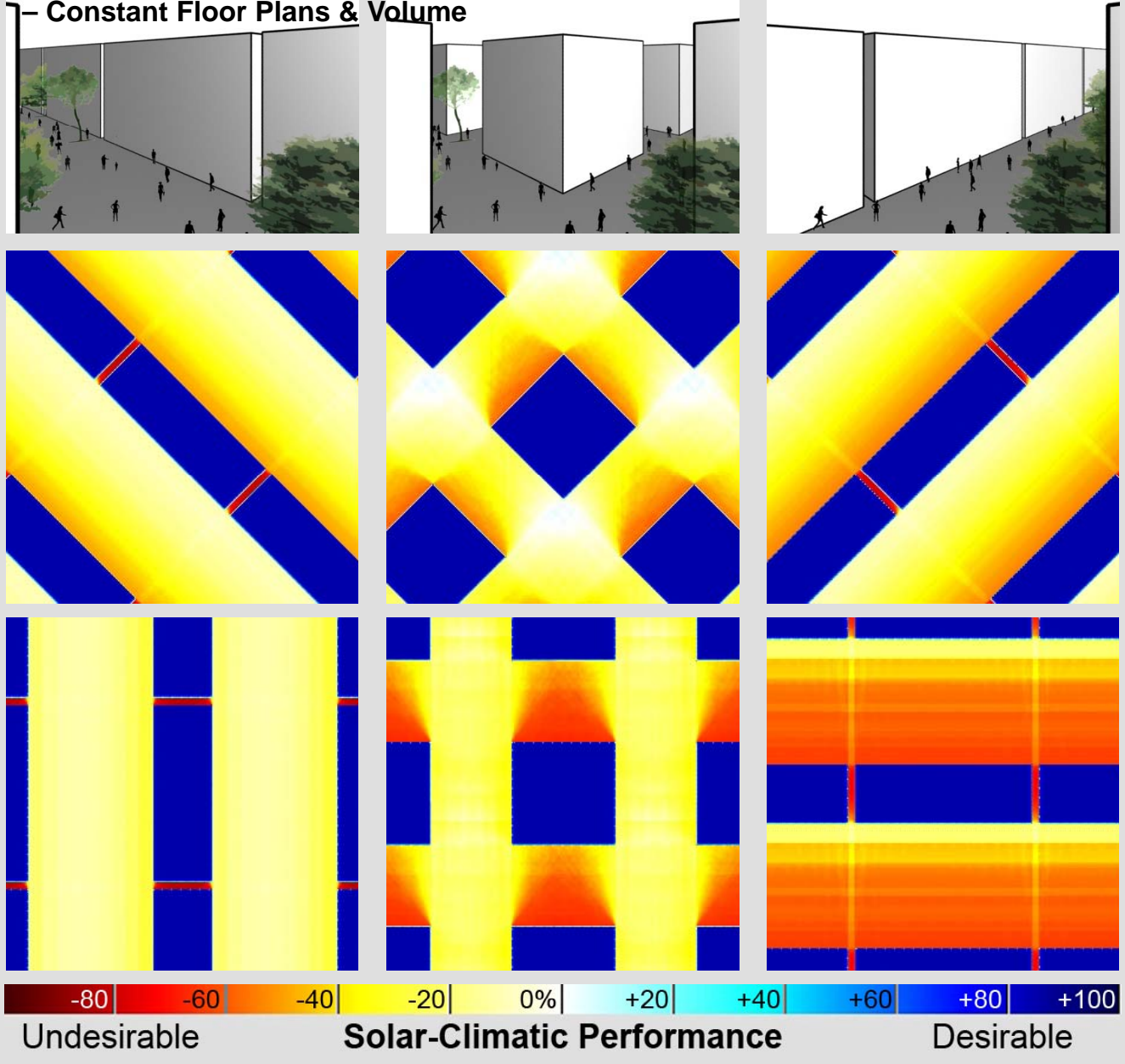
Year-Cycle Indoor Analysis of Different Proportions and Orientations



Year-Cycle Outdoor Analysis of Different Proportions and Orientations - Constant Floor Plans & Volume



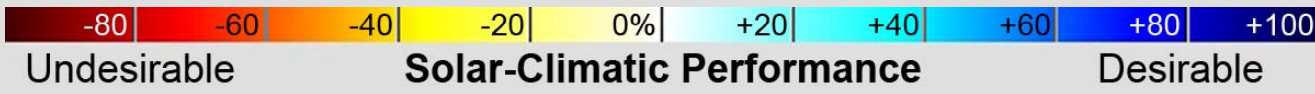
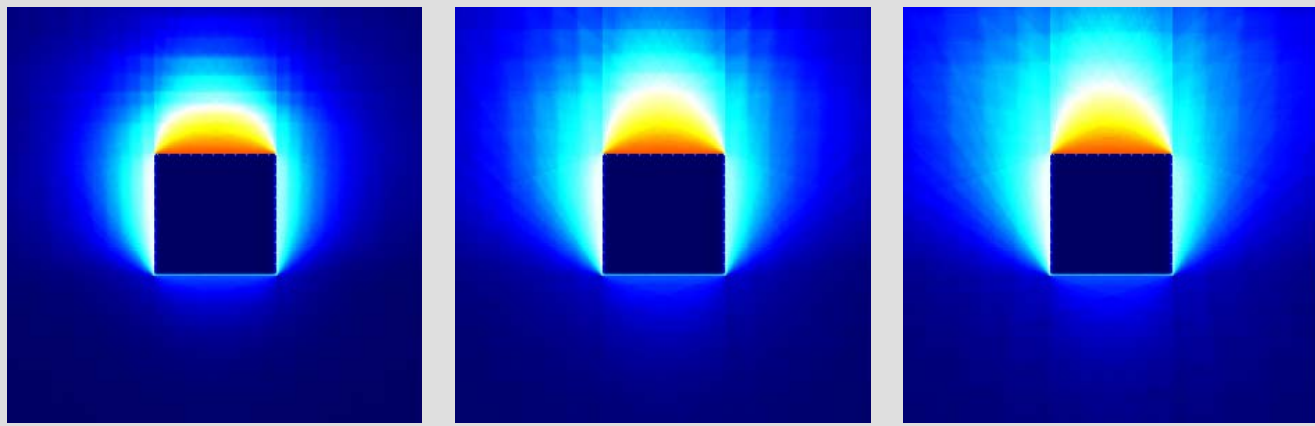
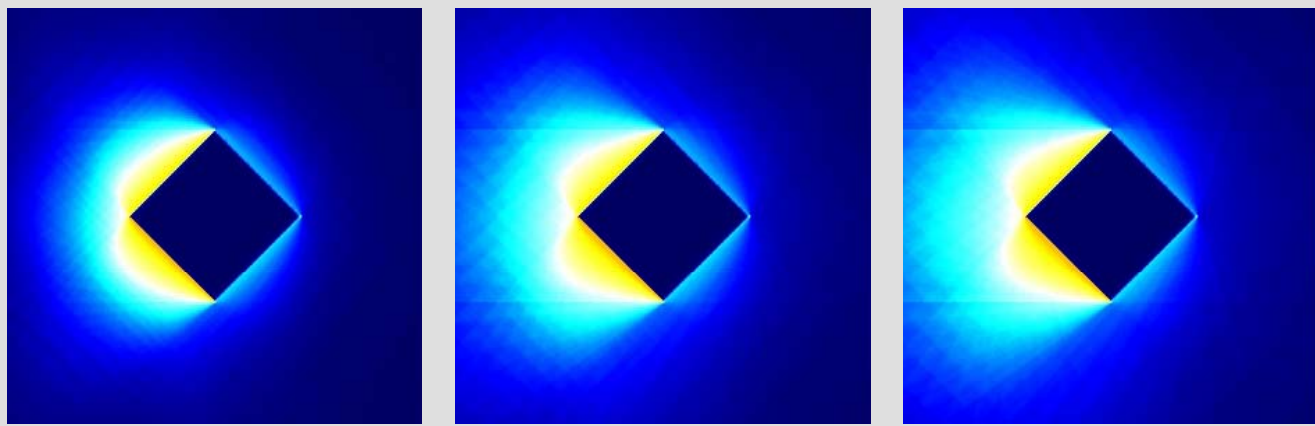
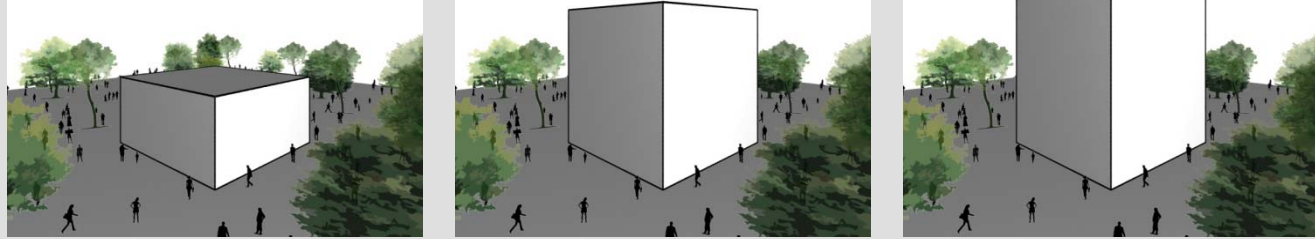
Year-Cycle Outdoor Analysis of Different Proportions and Orientations in Fabric - Constant Floor Plans & Volume



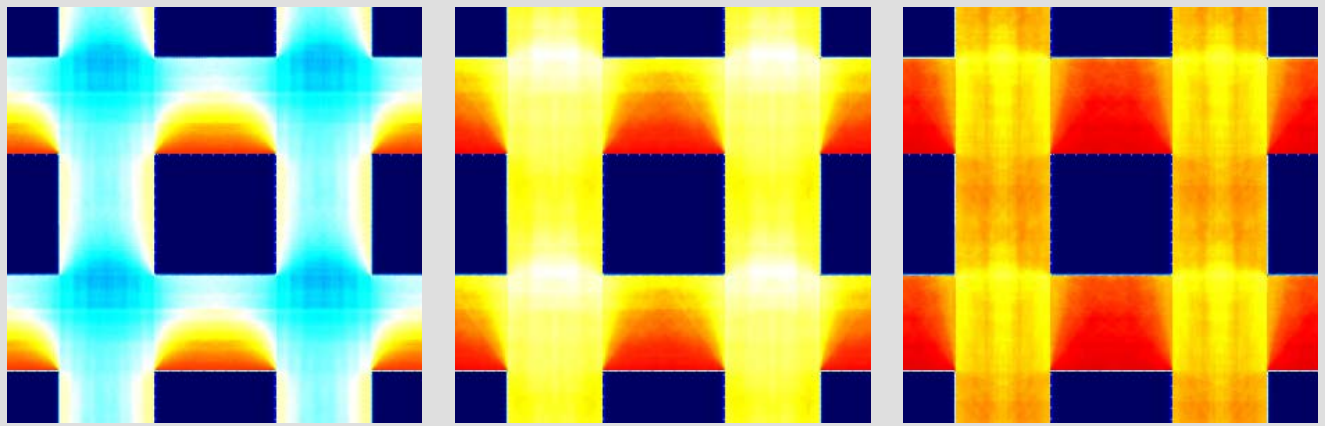
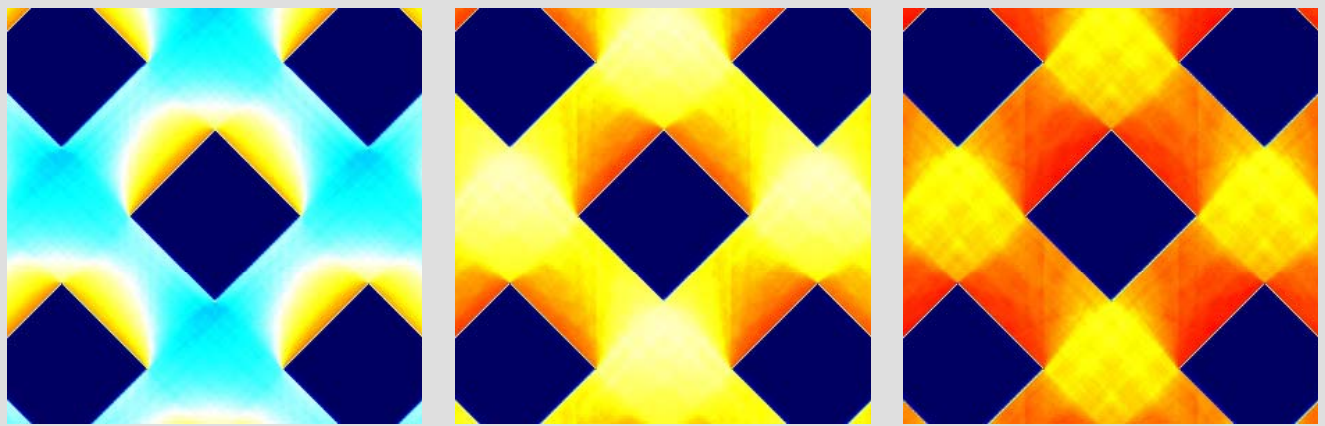
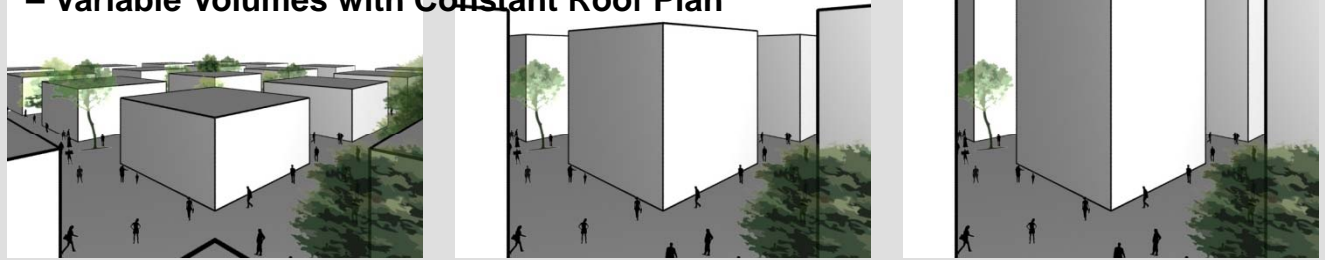
-80 -60 -40 -20 0% +20 +40 +60 +80 +100
Undesirable Solar-Climatic Performance Desirable



Year-Cycle Analysis of Different Heights and Orientations - Variable Volumes with Constant Roof Plan



Year-Cycle Analysis of Different Heights and Orientations in Fabric – Variable Volumes with Constant Roof Plan

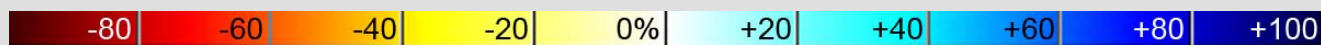
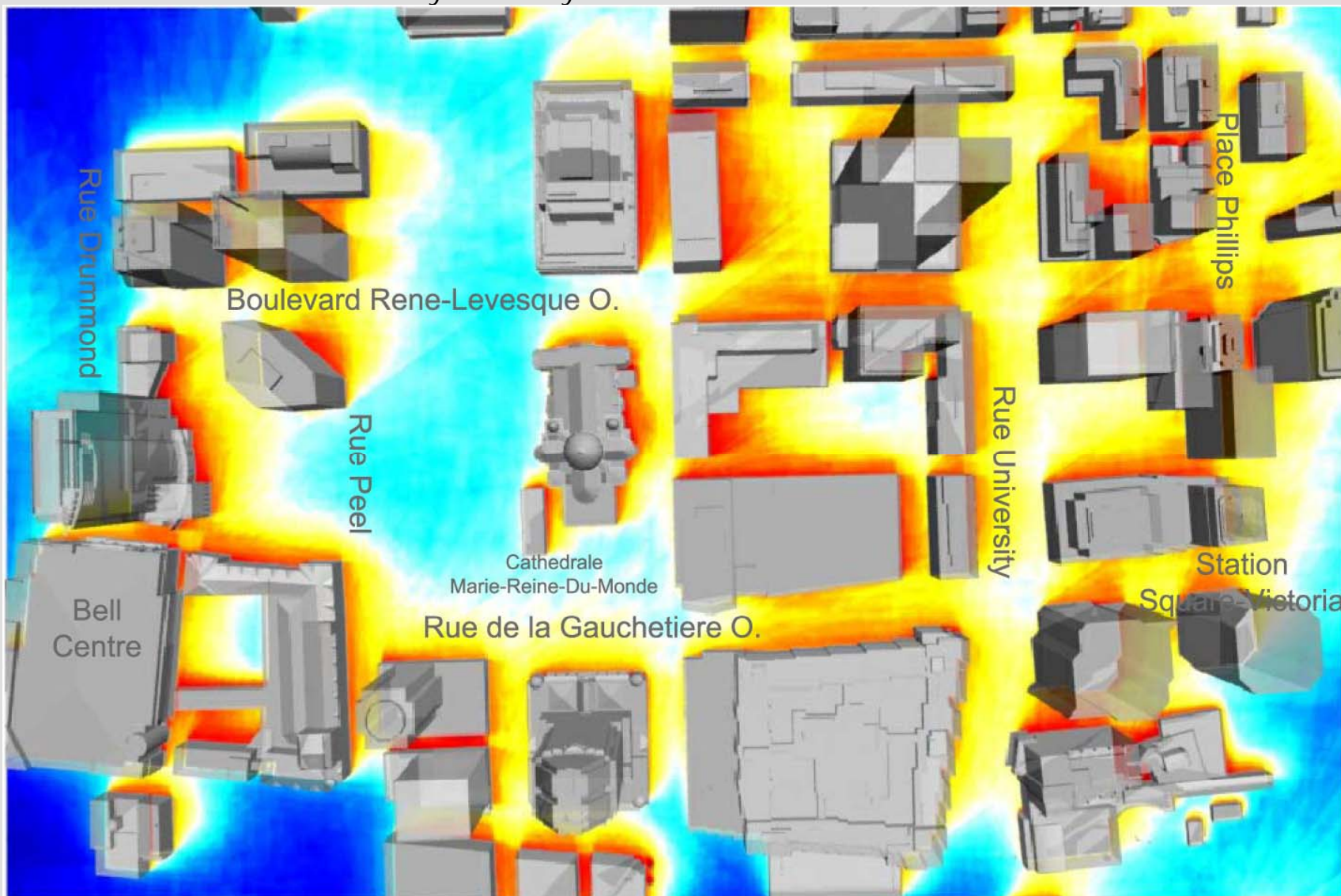


Undesirable

Solar-Climatic Performance

Desirable





Undesirable

Solar-Climatic Performance

Desirable



**Merci Beaucoup
Les Montréalaises!**



consider a look from the Sun!

The author welcomes further exchanges with the OCPM consultation committee so that additional updates to this type of information and analysis can be shared regarding this project. In addition, similar solar-climatic studies during the processes of building skin and urban design can improve many aspects including the potentials and performances in terms of energy production, energy demand, daylight, health, comfort and safety for long periods of time; with the added benefit that most of these architectural rearrangements and improvements do not necessarily increase the construction costs.



References

- ▶ Public Consultation Report On Montreal Development Plan, Report Overview, English version, OCPM, 2014
- ▶ Samimi, M., Nasrollahi, F. (2014):
“Intelligent design using solar-climatic vision: Energy and comfort improvement in architecture and urban planning using SOLARCHVISION”, Book, Young Cities Research Paper Series, Volume 09, Technische Universität Berlin, would be available at Germany, <http://opus4.kobv.de/opus4-tuberlin/home>
- ▶ Projet immobilier sur la rue St-Antoine Ouest, 2014, Office de Consultation Publique de Montréal: <http://ocpm.qc.ca/node/4080>
- ▶ Poulin, Lewis (2013): “Weather Forecast Data an Important Input into Building Management Systems”, Paper, The International Conference for Enhanced Building Operations (<http://icebo.tamu.edu>), Montreal, Canada, available at: http://collaboration.cmc.ec.gc.ca/cmc/cmoi/product_guide/docs/REFcsts/
- ▶ Samimi, M. (2013): “The sun and the city of Montréal”, Proposal for PDM (Plan for Development of Montréal), available at: <http://ocpm.qc.ca/pdm>, Documents, No. 9.1.20 and 9.1.20.1, OCPM
- ▶ Environment Canada: available at: <http://www.ec.gc.ca/>
- ▶ Canadian Weather Energy and Engineering Datasets CWEED: Long term hourly solar radiation and temperature, etc. contains information licensed under the Open Government Licence – Canada. available at: ftp://ftp.tor.ec.gc.ca/Pub/Engineering_Climate_Dataset
- ▶ U.S. Department of Energy: Typical Meteorological Year in EnergyPlus weather format (.epw) http://apps1.eere.energy.gov/buildings/energyplus/weatherdata_about.cfm, based on CWEC: Canadian Weather for Energy Calculations
- ▶ Google Earth: <http://www.google.com/earth>
- ▶ Samimi, M., Nasrollahi, F. (2013): SOLARCHVISION Studies on Young Cities Project, Book, Young Cities Research Briefs, Vol. 06, Technische Universität Berlin.
available at: <http://opus4.kobv.de/opus4-tuberlin/frontdoor/index/index/docId/3798>
- ▶ Samimi, M., Nili, M.Y., Nasrollahi, F., Parvizsedghy, L., Vahabi-Moghaddam, D. (2011): “External and Internal Solar-Climatic Performance Analysis of Building Geometries Using SOLARCHVISION”, Paper, CleanTech for Sustainable Buildings - From Nano to Urban Scale, CISBAT International Scientific Conference, EPFL University, Lausanne, Switzerland.
available at: <http://leso.epfl.ch/cisbat>
- ▶ Samimi, M., Parvizsedghy, L., Adib, M., (2008): “A New Approach For Solar Analysis Of Buildings”, Paper in Arabnia, H.R. and Reza, H., editors, Proceedings of the 2008 International Conference on Software Engineering Research & Practice, SERP 2008, Las Vegas Nevada, USA, CSREA Press, ISBN 1-60132-088-4.

