



terra machina

Jean-françois St-Onge (Architecte, Co-fondateur ADHOC architectes)

Mathieu Belen (Concepteur en architecture, ADHOC architectes)

Alexandre Hamlyn (Concepteur en architecture, ADHOC architectes)

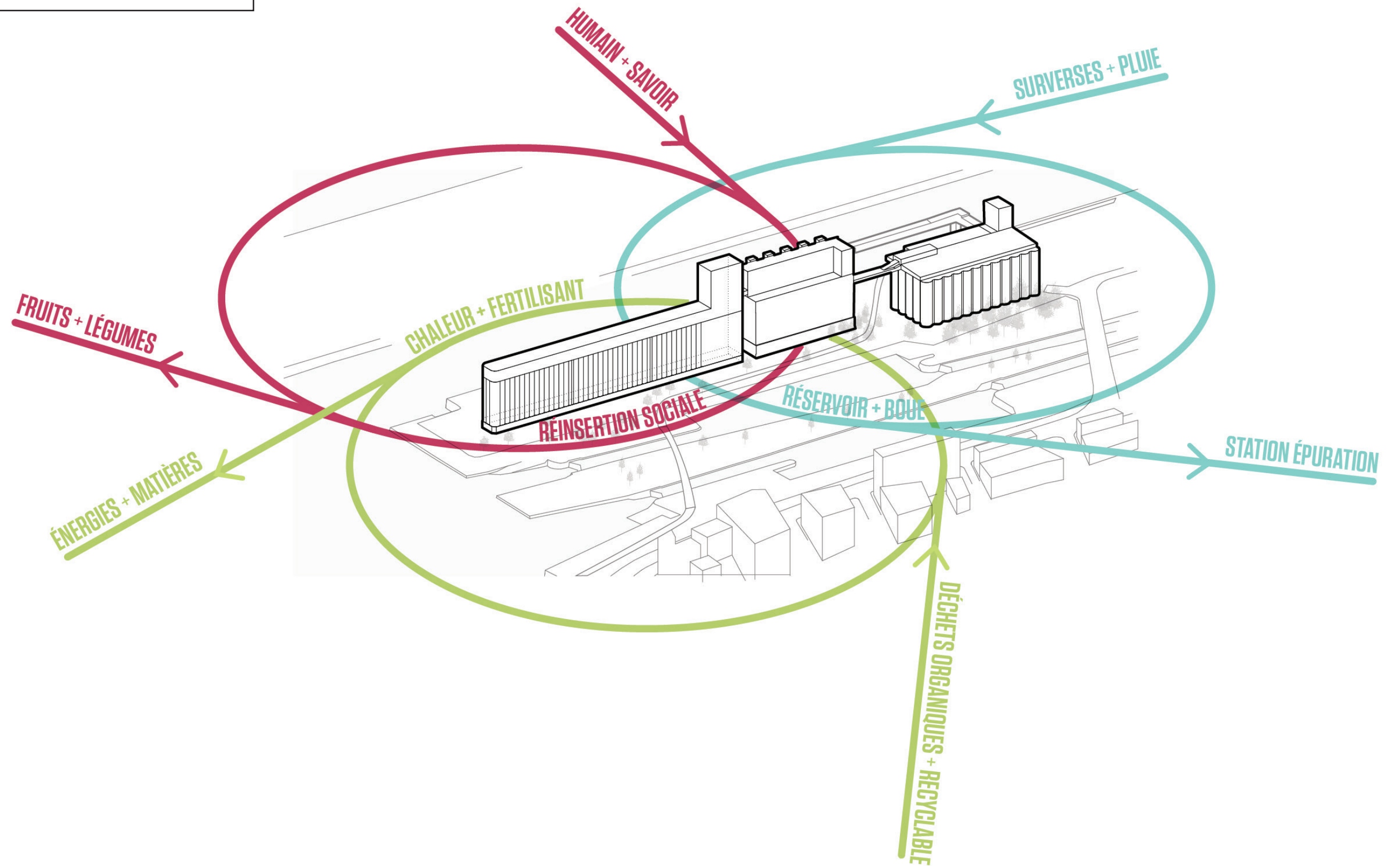
Sarah Lanoue (Concepteur en architecture)

jf.st-onge@adhoc-architectes.com

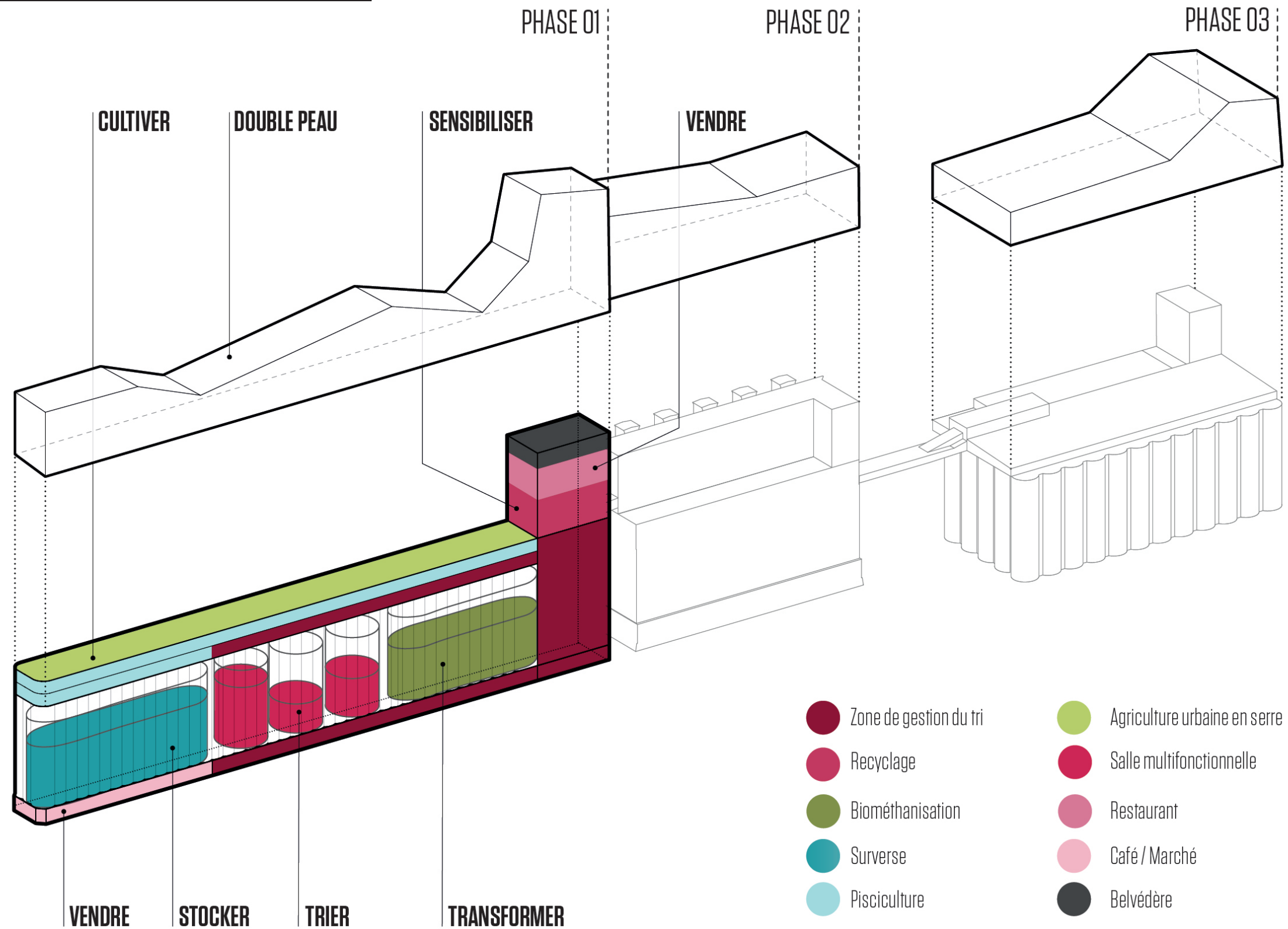
514.701.5646

“ *terra machina* ou comment reconvertir une infrastructure du passé en potentiel pour le futur ? ”

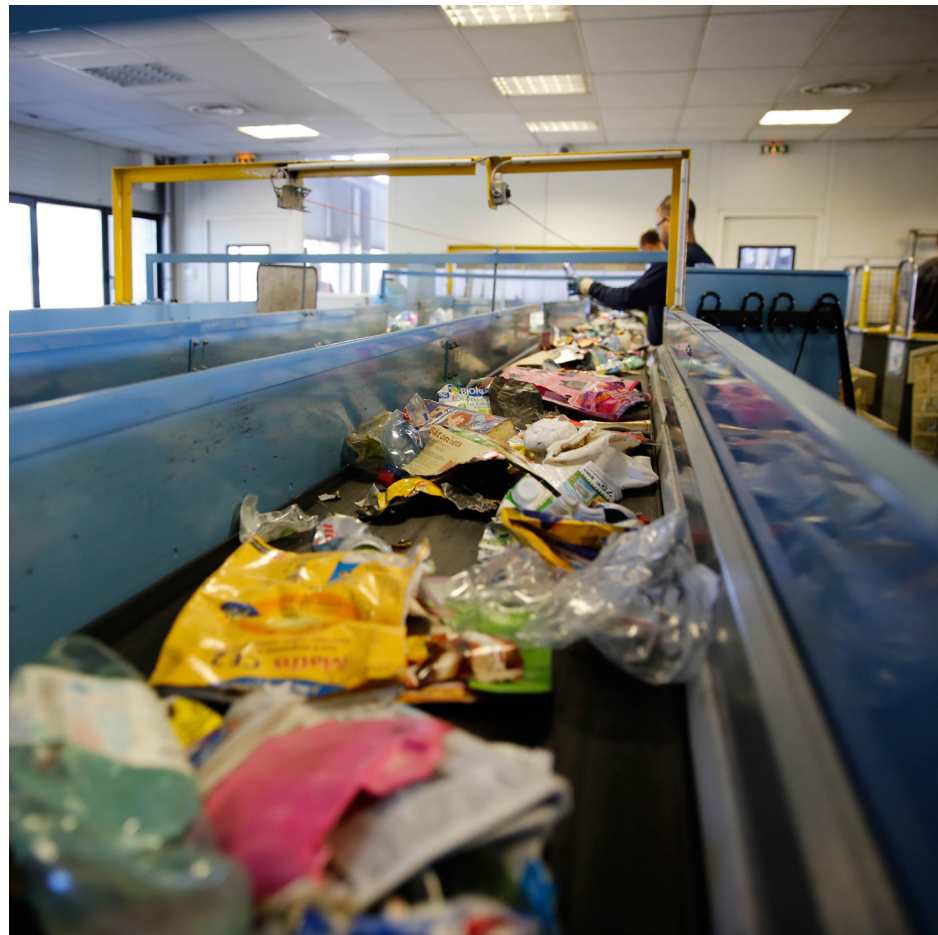
Relation avec la ville



Organigramme programmatique

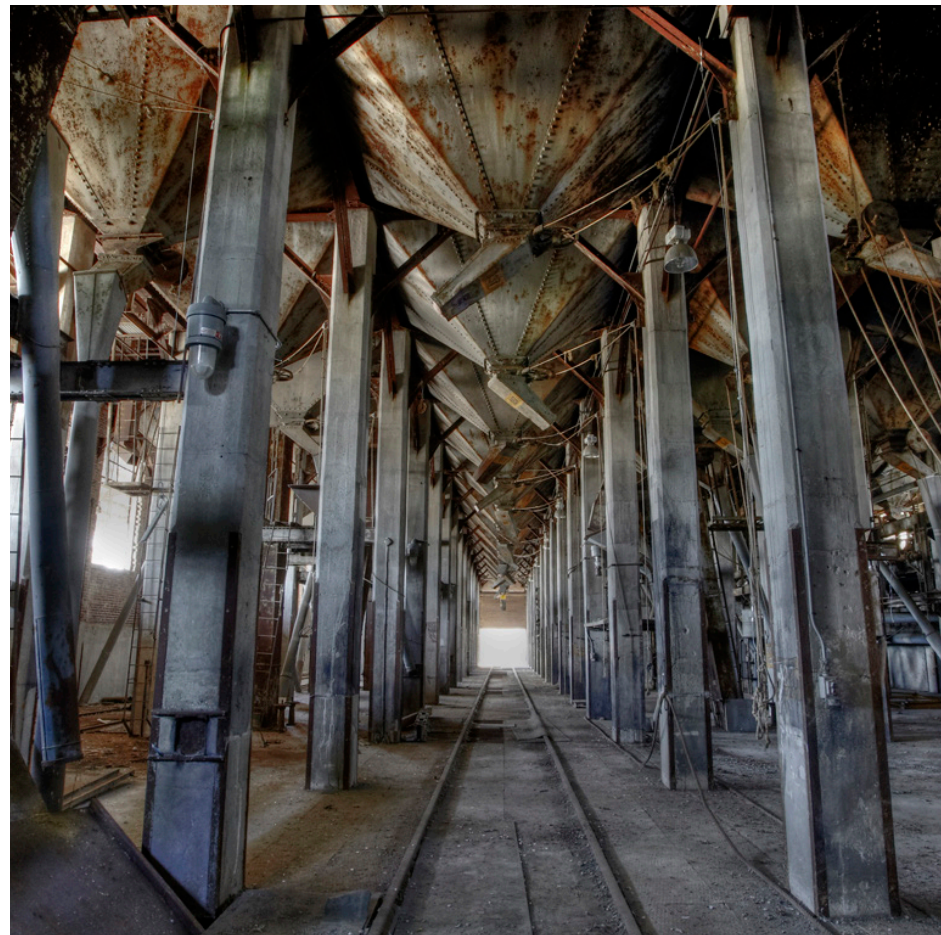


Gestion des déchets



Agriculture urbaine





Commerces



Restauraton

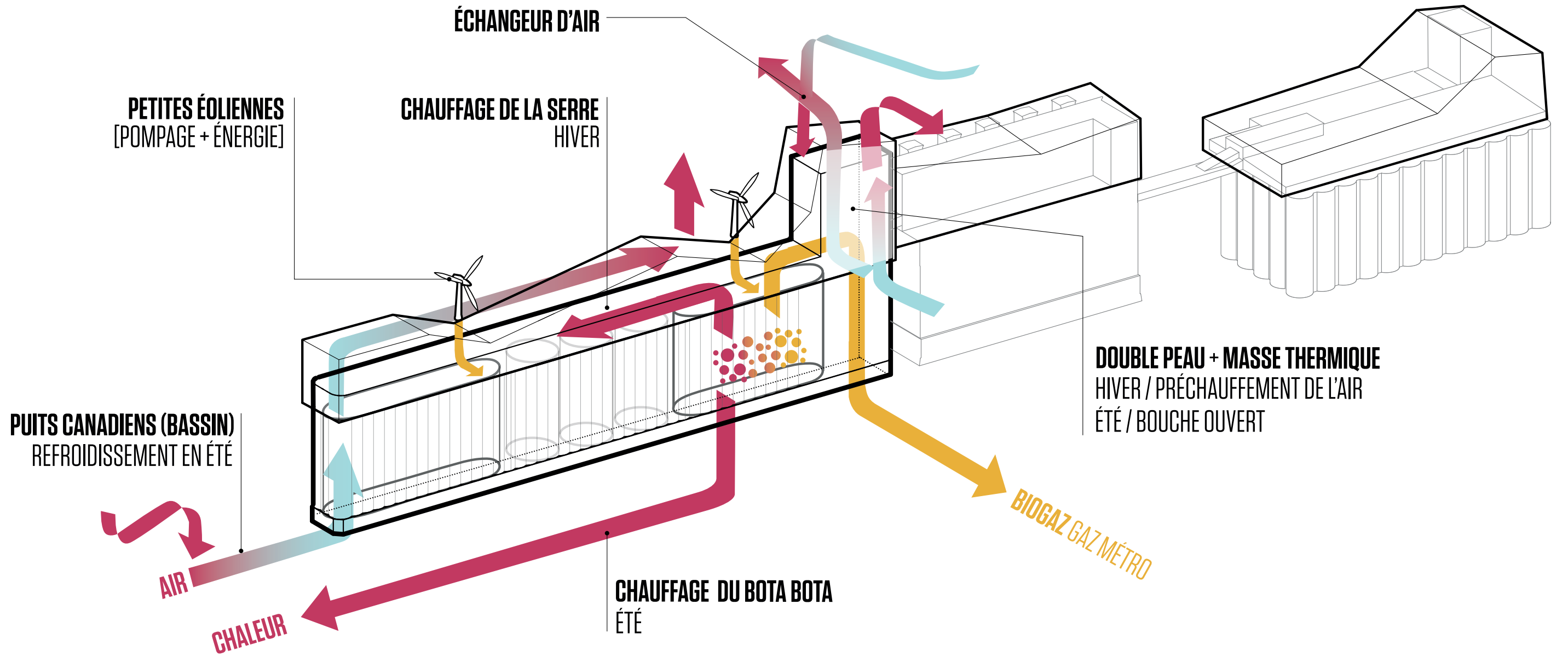
Un geste architectural



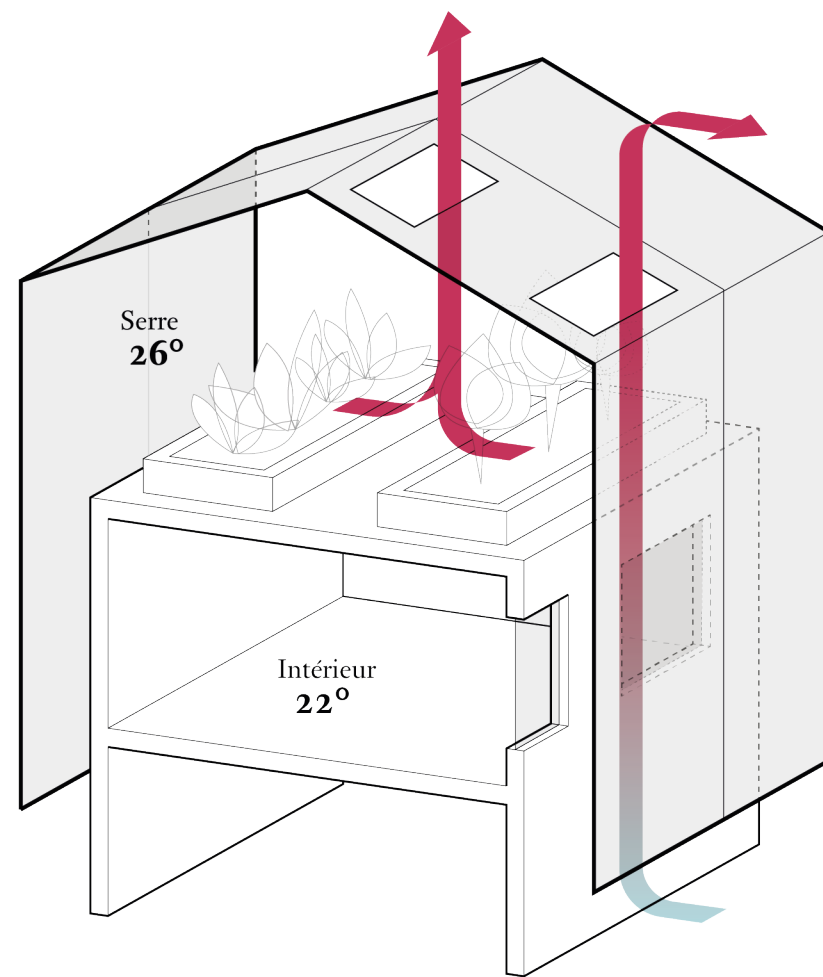


BOTA
SPA-SUR-L'EAU

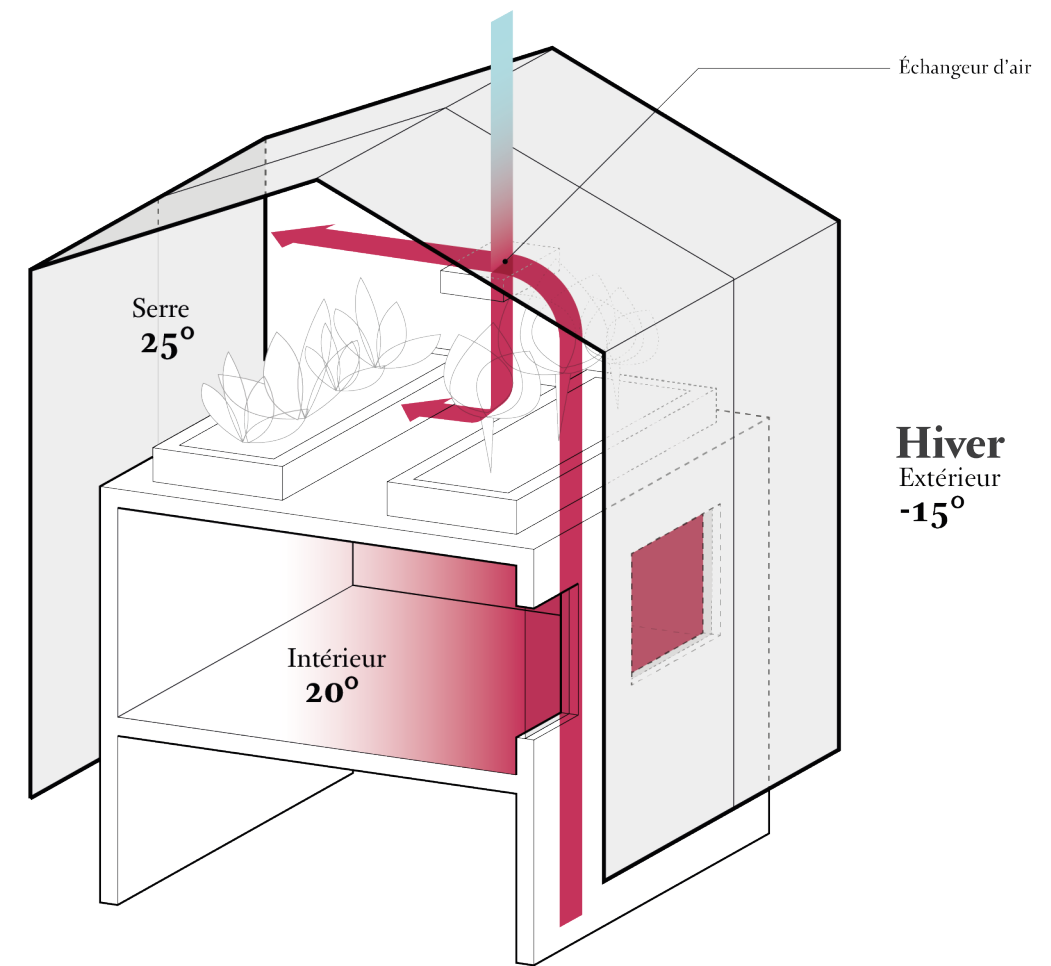
Bio-énergie



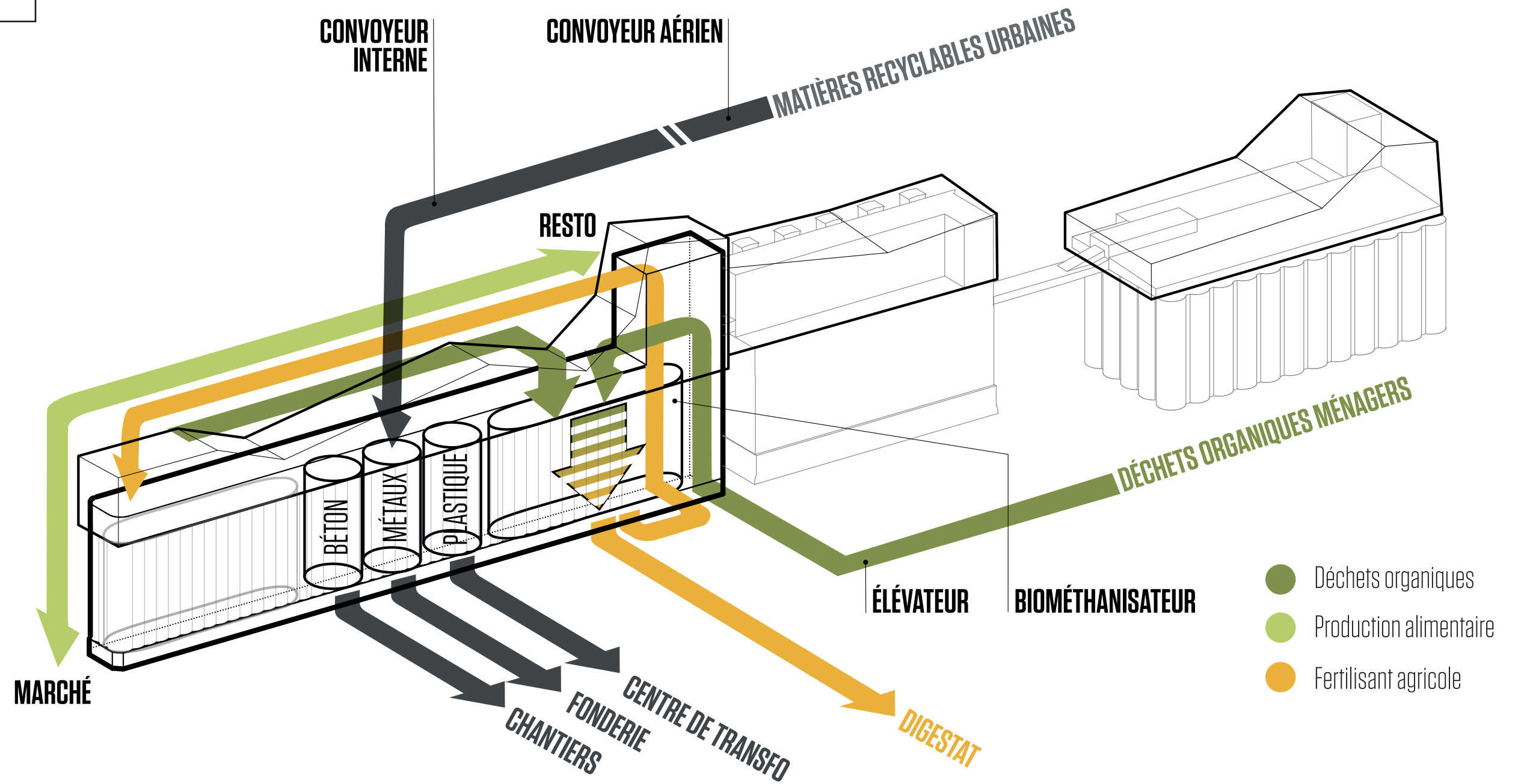
La double peau



Été
Extérieur
21°



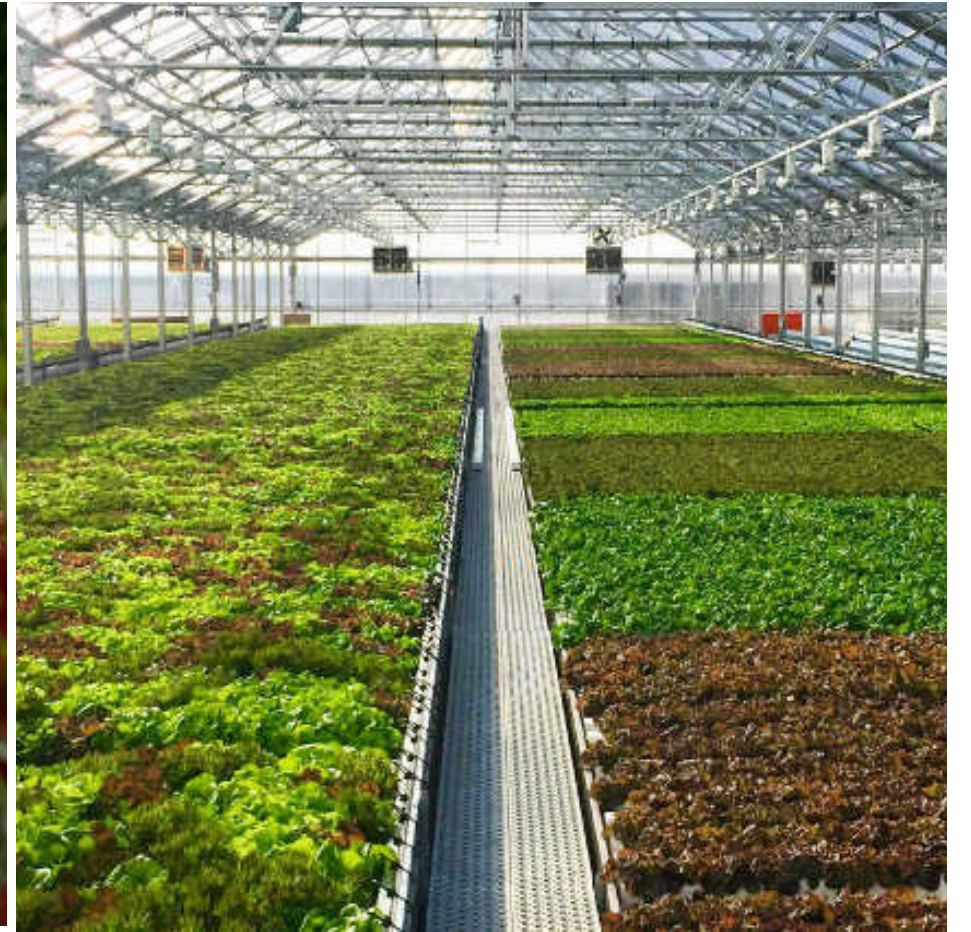
Matières



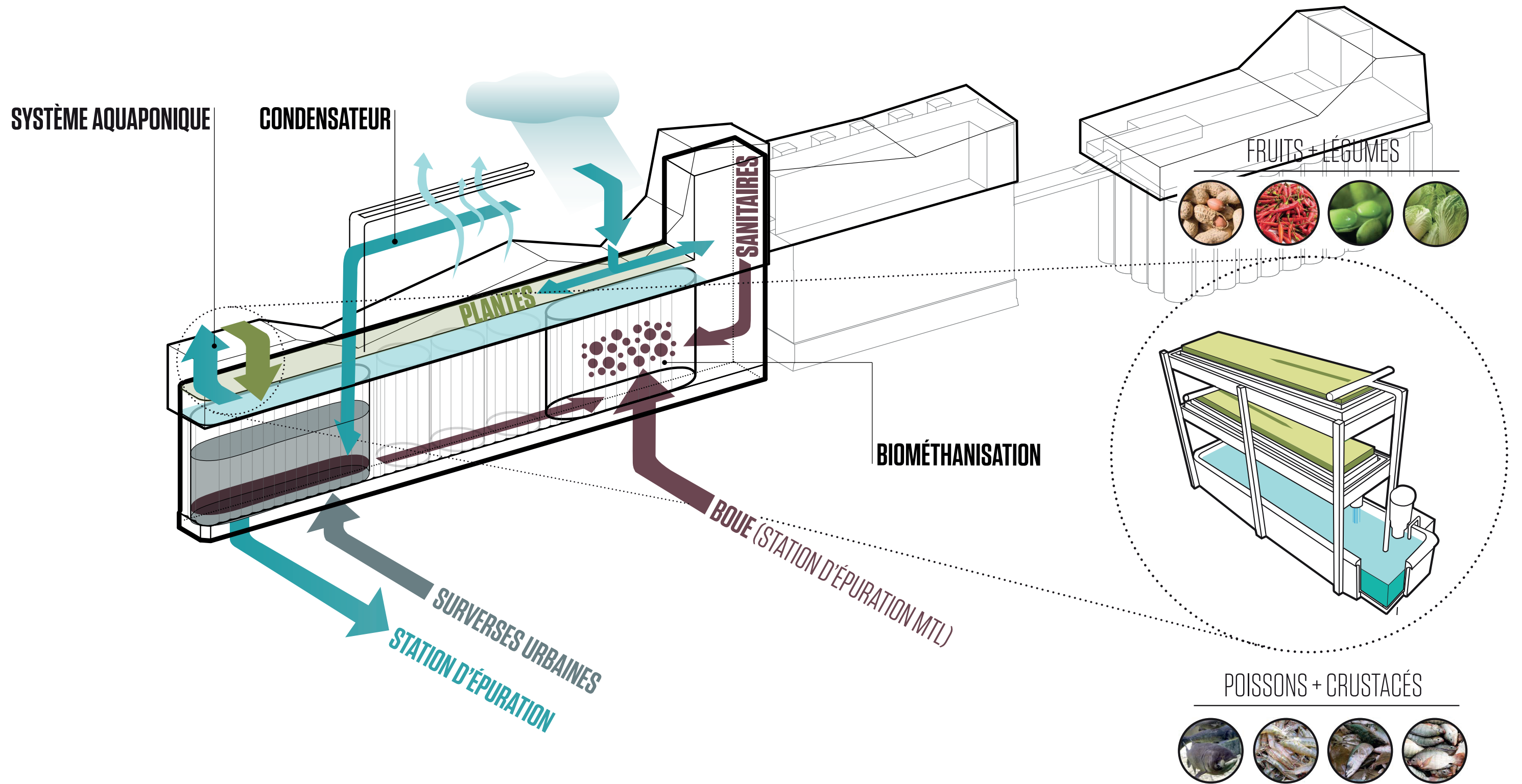


Acheminement

La serre



Traitement des eaux





Agriculture aquaponique

Les surverses



“ Les premiers fruits splendides d’une ère nouvelle ”

Le Corbusier, Vers une architecture. 1946

