



CHR Pilot Project



Limited 11 bus service on
Ridgewood Avenue first
weekend of CHR Pilot Project



Intersection CH –
Remembrance 1 June.
Installations not ready for
beginning of Pilot Project



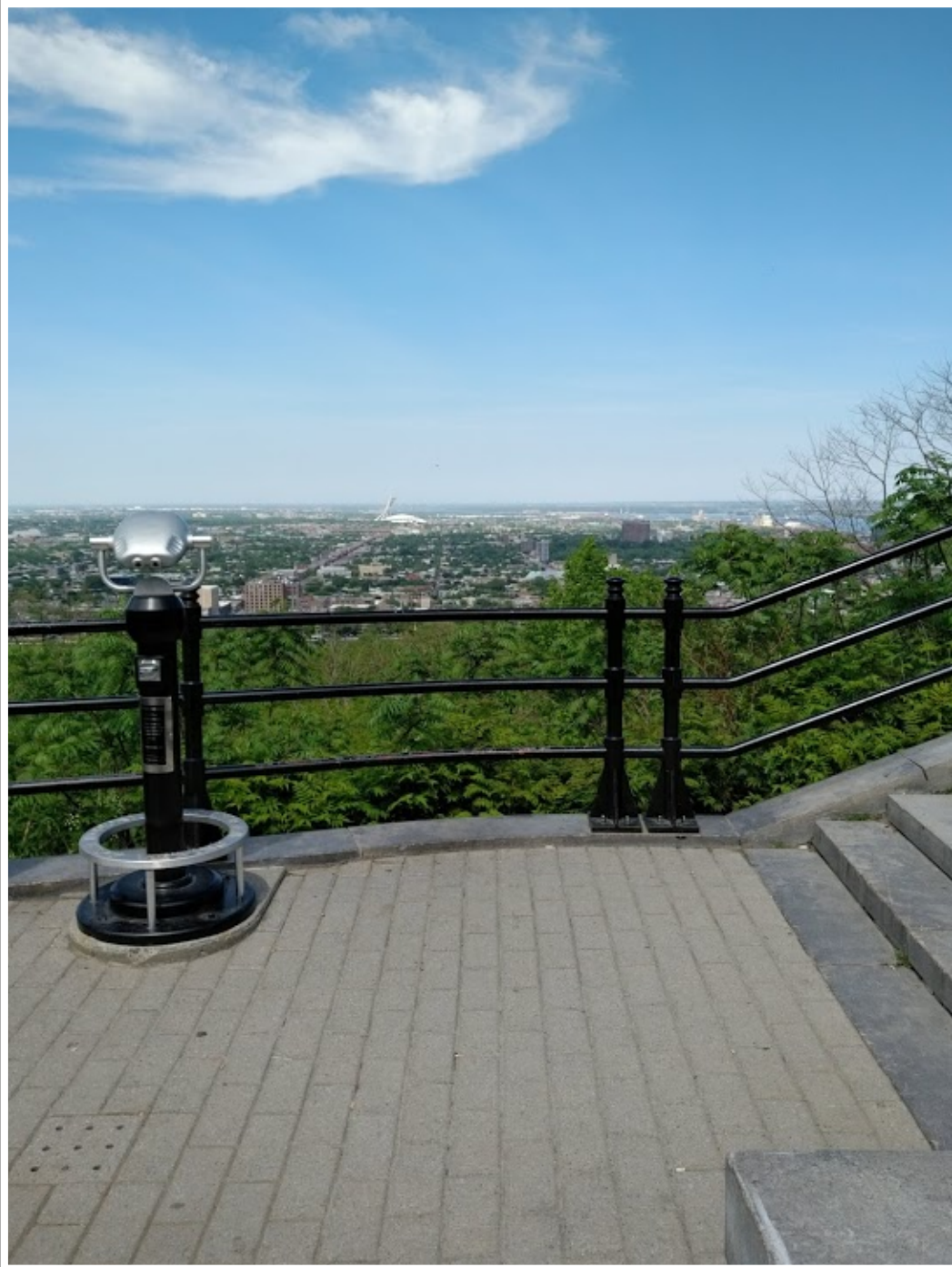
Notice to drivers on
Remembrance re Pilot Project.
1 June.



1 June. Media looking for reactions.



Improvised installation on
Remembrance from Beaver
Lake parking lot



View east from Camillien-Houde lookout. View was eclipsed by Café Suspendu



Sign between parking lots allowing access to Mount Royal Cemetery between 9AM-4PM. Despite signage, Stationnement Montréal agent attempted to impede access.



Café Suspendu under construction at C-H Lookout



View of rear of Café Suspendu that replaced view of city from parking lot and roadway



lundi monday	mercredi wednesday	jeudi thursday	vendredi friday	samedi saturday	dimanche sunday
			1	2 INAUGURATION	3
	5	6	7	8	9 10
	12	13	14	15	16 17
18	19	20	21	22	23 WEEKEND DE LA SAINT-JEAN
25	26	27	28	29	30

List of activities at Café Suspendu







Rearview of Café Suspendu.
View from roadway blocked.



iniere | Espaces Collectifs a transposé en installations concrètes
eux privilégiés par la Ville de Montréal: le Café suspendu,
e soleil, plateforme introduisant les visiteurs et cyclistes à de
les haltes de détente situées à proximité des arrêts d'autobus, l
e, offerte de juin à octobre. Ce projet pilote aspire à révéler le
embrance et à placer les usagers et les Montréalais au coeur d'un
nin d'accès au parc du Mont-Royal. Symbole identitaire et poumon
paysagère et culturelle du parc du Mont-Royal a guidé chaque ét
UX.

ollectifs has taken the Ville de Montréal's vision for the pilot project to stop transit tr
Remembrance roadways and created the following installations: the Café suspendu
soleil (a viewing area that allows visitors to enjoy the scenery from the walkway), a
ops. What's more, a varied program of shows and activities has been scheduled du
visitors. This project aims to reveal the hidden potential behind the Camillien-H
g Montrealers in a collective reflection on the future of the path. As a symbol of the c
Mount Royal Park has inspired and guided the organization through each step of the

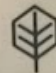
accessibles en tout temps

n-Houde • Belvédère soleil •
epensés / Redesigned bus stops
t de détente / Bike and rest stops

Tous les week-ends et même
/ Every weekend and even more

Café suspendu ouvert / Open • Acti
et sportives / Cultural and sports acti
parcours et randonnées / Itineraries
Ateliers thématiques et conférence
workshops and conferences • Activités
fériés / Special holiday events

Montréal 

 LA PÉPINIÈRE
ESPACES COLLECTIFS

A month into Pilot Prpject,
improvised installation already
in disrepair.



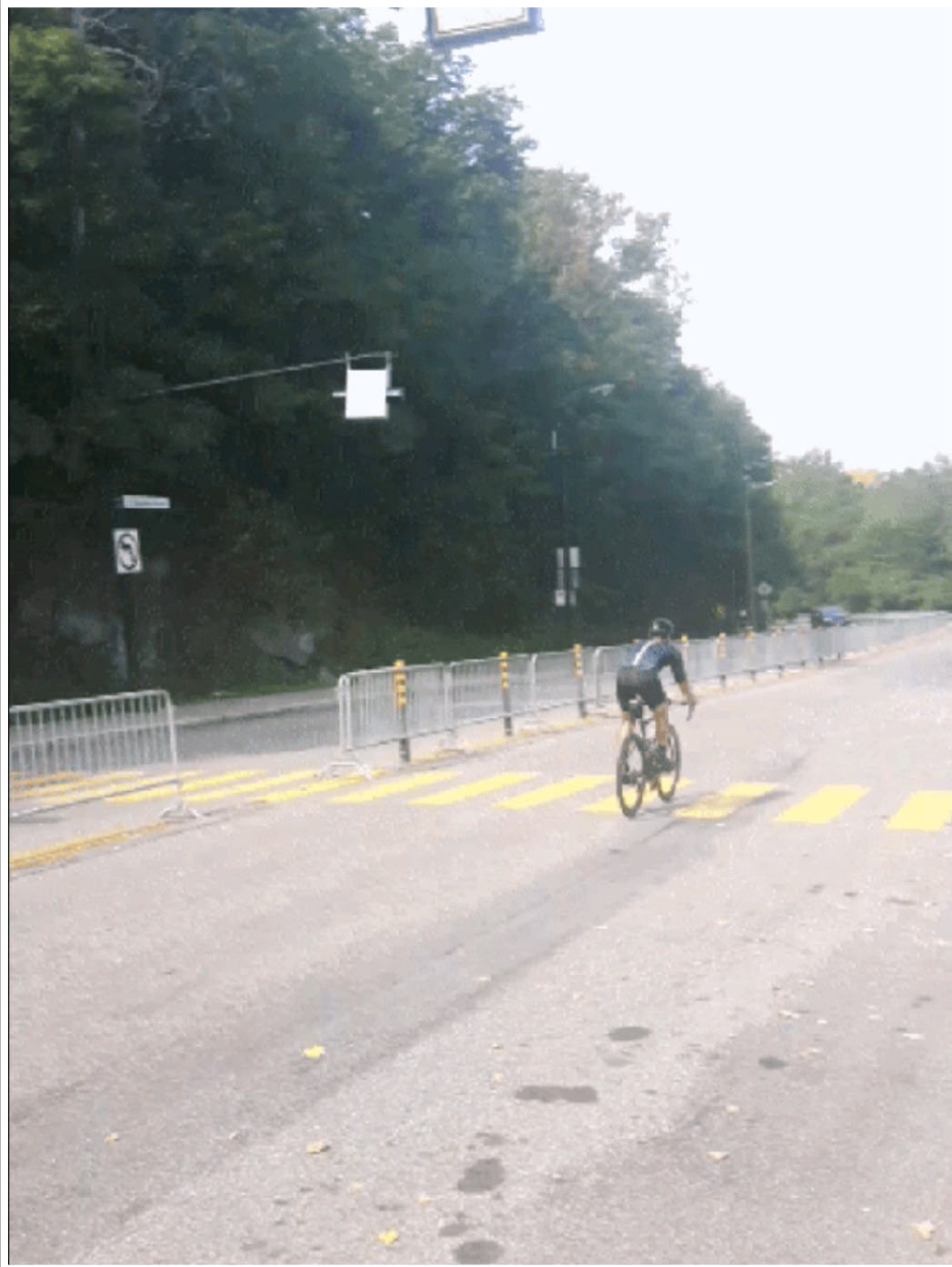
Belvédère Soleil with rental information visible to passerby.



Friday afternoon in the height
of summer 2018. Empty
parking lot at Smith House



Friday afternoon, Summer
2018 Smith House parking lot.
No many cars.



Friday afternoon, August 2018. Speed display at pedestrian walkway at the end of the Camillien-Houde lookout parking lot clocked this cyclist going over 60km/hr. This was a common occurrence during the pilot project.



'FUCK VOS CHARS' on Camillien-Houde near ghost bike. This was left on a municipal installation for weeks, despite Plante Administration being alerted to obscenity via Twitter. This pretty much sums up the whole pilot project and the thinking behind it.