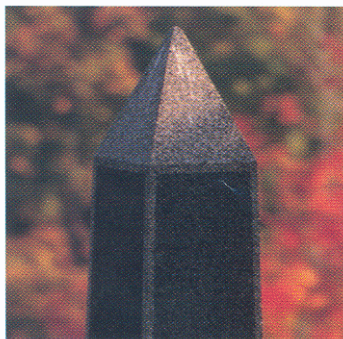
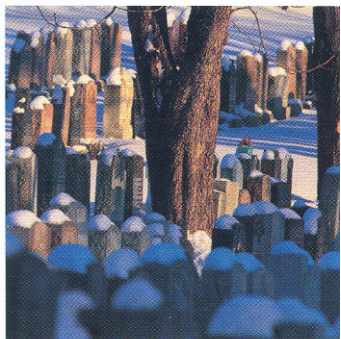
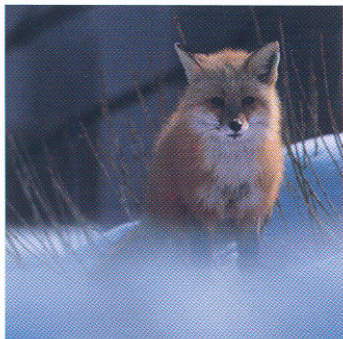
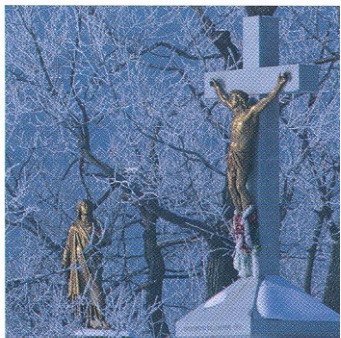


THE NOTRE-DAME-DES-NEIGES

CEMETERY'S MASTER DEVELOPMENT PLAN:

HONOURING THE MEMORY,
PROTECTING THE ENVIRONMENT



NOTRE-DAME-DES-NEIGES
CEMETERY



NOTRE-DAME-DE-MONTRÉAL
PARISH COUNCIL

NOTRE-DAME-DES-NEIGES CEM

A CEMETERY

IN A UNIQUE SETTING



Developing a tool that will enable us to protect and intelligently manage the Cemetery's primary function and ensuring that it plays a vital and distinctive role in Montreal's environmental, urban and social fabric.

These are the two objectives of our Master Development Plan. At the request of the City of Montreal, in 1995, the Plan was developed by a team of specialists who studied all aspects of the Cemetery's activity.

This extensive study, along with discussions with municipal officials and citizens' groups with an interest in Mount Royal, resulted in a planning document of more than 400 pages, which will guide the Cemetery's administration in the years ahead.

A PLACE OF REMEMBRANCE AND A GREEN SPACE

Our Cemetery is one of the most beautiful and precious landmarks in Montreal's natural, historical and cultural heritage. Founded in 1854, it is owned and operated by the Notre-Dame-de-Montréal Parish Council, which has cared for this 340-acre green space on the slopes of Mount Royal for more than 150 years.

Not only is Notre-Dame-des-Neiges Canada's largest cemetery, it is also one of the largest green spaces in Montreal. Its layout, inspired by the concept of the garden cemetery, gives the site its unique natural character. It is home to more than 10,000 trees and numerous attractive floral plantings.

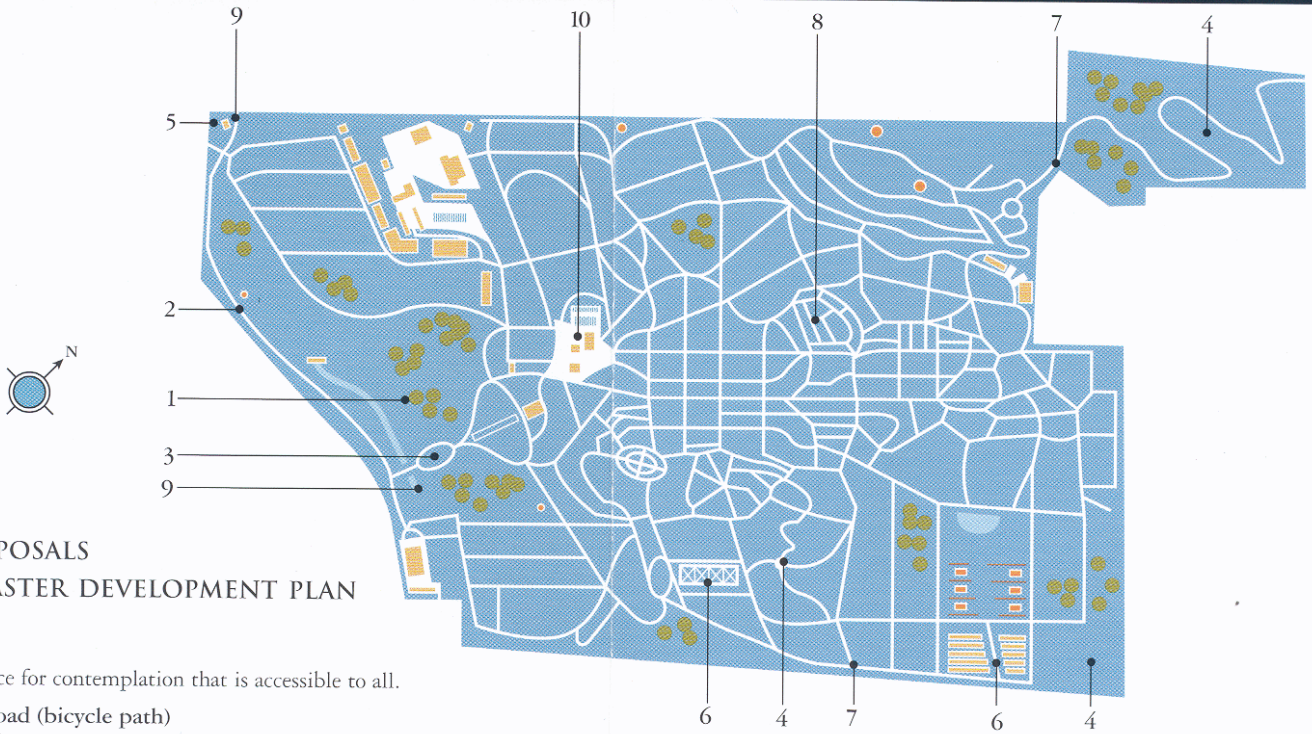
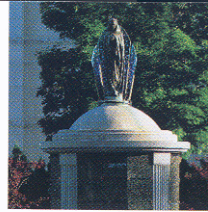
Along with the importance of conserving this green space is the need to conserve our heritage. The Cemetery contains monuments to more than 335 important historical figures, including Thomas d'Arcy McGee, Henri Bourassa, Robert Bourassa, Sir Georges-Étienne Cartier, Jean Drapeau, Olivier Guimond, Calixa Lavallée, Émile Nelligan, Maurice Richard, and Jeanne Sauvé. It is also home to several outstanding works of architecture, including the St. Claire d'Assise mausoleum/charnel house, built in 1855, and the Chapel of the Resurrection, dating from 1877.

Our Cemetery has always been part of Montreal's landscape. It is open to all visitors seeking a peaceful place where they can mediate and reflect. Our Master Development Plan will not only ensure that this haven of tranquility is protected, it will also help us forge closer ties with the entire Montreal community.

ETERY:

NOTRE-DAME-DES-NEIGES CEMETERY

A CEMETERY IN A UNIQUE SETTING



MAIN PROPOSALS IN THE MASTER DEVELOPMENT PLAN

- 1 The field**
A quiet place for contemplation that is accessible to all.
- 2 The ring road (bicycle path)**
An enjoyable way to appreciate the natural environment.
- 3 Architectural heritage**
An ambitious restoration program to preserve the site's architectural and historical treasures.
- 4 Wooded areas**
A planting program will add to the 10,000 or so trees already on the site.
- 5 Jarry-dit-Henrichon House (Decelles entrance)**
Visitors will be able to learn about the Cemetery's history at the interpretation centre to be developed in this historic residence.
- 6 Mausoleums**
These will enable the Cemetery to maintain its primary function while at the same time respecting the environment.
- 7 Crossroad**
A new pedestrian walkway will bridge the two surrounding neighbourhoods.
- 8 Lanes and pathways**
Arteries for pedestrians and vehicular traffic will remain in their present state and will continue to blend into the Cemetery's natural environment.
- 9 Interpretative activities**
A complete program of activities will be offered at various locations in the Cemetery.
- 10 Heritage and architecture**
A study will be conducted so that Montrealers can gain a better understanding of the Cemetery's heritage and architectural value.
- 11 Tree inventory**
A replanting program will be accompanied by a complete inventory of trees on the site, with the goal of carefully planning all aspects of reforestation and conservation.
- 12 Signage**
The Cemetery is crisscrossed by more than 55 km of roads, lands and pathways. A simple, discreet system of signs will make it easier for visitors to find their way.

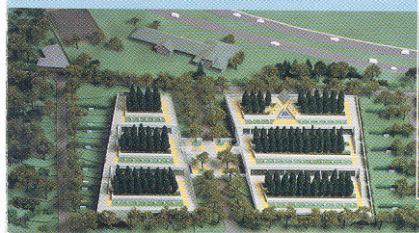
THE CEMETERY'S MISSION: IN KEEPING WITH THAT OF THE NOTRE-DAME-DE-MONTRÉAL PARISH COUNCIL

The Notre-Dame-de-Montréal Parish Council owns two exceptional historical sites: Montreal's Notre-Dame Basilica and Notre-Dame-des-Neiges Cemetery. The Parish Council takes a management approach that respects its mission as a religious institution serving the Christian community.

Notre-Dame-des-Neiges Cemetery is a Catholic cemetery that provides burial services and related products and services.

As a sacred place, the Cemetery is an extension of the Church that seeks to commemorate the dead with respect and dignity. It is a manifestation of the Christian belief in the resurrection of Christ and in our own future resurrection. The Cemetery's role complements the pastoral function and provides comfort to the bereaved in their time of need.

The Cemetery, a non-profit organization that receives no government funding, manages its operations to ensure that they are financially sound, so that it can meet its long-term obligations.



Model of the Boisé de l'Est mausoleum:
An innovative design that is remarkably well integrated with the surrounding environment.

THE DEVELOPMENT PLAN

ENSURING THAT THE FUTURE IS GREEN

The Master Development Plan, which will assist Notre-Dame-des-Neiges Cemetery in carrying out its mission, also serves as a form of assurance for Montrealers.

The proposals it contains will ensure that the green zone constituted by the Cemetery is protected, while laying the groundwork for an even closer relationship with the City. Here are some highlights from the Plan:

- ▶ At the request of the City of Montreal, the Cemetery's management has agreed that the 85,000-square-metre field along Côte-des-Neiges Road not be used for burials.
- ▶ Also at the City's request, the Master Development Plan allows for a strip of land eight to 12 metres wide along Côte-des-Neiges Road to be developed as a bicycle path.
- ▶ A program for the restoration of architectural heritage buildings will be developed.
- ▶ Significant improvements will be made to the environment, through an ambitious reforestation program.
- ▶ An interpretation centre will be opened at Jarry-dit-Henrichon House, so that visitors can learn about the Cemetery's history.
- ▶ Two new mausoleums will be built on the site. They will blend into their surroundings and require less space than traditional burials. This will enable the Cemetery to maintain its primary function while at the same time respecting the environment.
- ▶ A north-south pathway will be added at the request of the City of Montreal.
- ▶ Interpretation activities will be developed.
- ▶ A heritage and architectural study of the buildings on the site will be conducted.
- ▶ A ring road will be built around the site.
- ▶ An inventory of the trees in the Cemetery will be conducted.
- ▶ The hierarchy of lanes and pathways will be respected.
- ▶ A new system of signs will be developed.

THE MAUSOLEUM: A SOLUTION WITH MANY ADVANTAGES

Since 1854, more than 900,000 people have been buried in our Cemetery. As we pursue our mission, we must deal with two specific factors. The first is our desire to protect the green zone that our Cemetery represents. The second is the fact that our institution has agreed to stop burials in the area of the site known as the field, along Côte-des-Neiges Road.

Given these factors, the building of two medium-sized mausoleums is an ideal solution. They would enable us to meet demand for the next 25 years, while preserving the field's natural character and providing the Cemetery, a non-profit organization that receives no government funding, with the funds it needs to implement the projects in its Master Development Plan.

In addition, the mausoleums would be designed to blend into their setting and would be out of public view, thereby respecting Montrealers' environmental concerns about Mount Royal.

For more information, please consult www.cimetierenddn.org or contact us at (514) 735-1361.